

用心服务 · 品质卓越

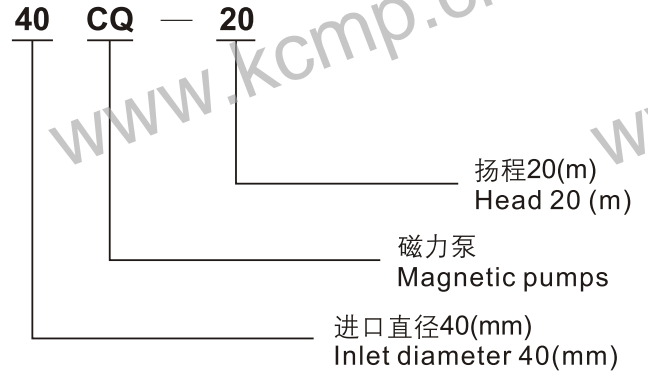


磁力泵系列 MAGNETIC PUMPS SERIES

产品说明书 Product specification

▶ CQ型磁力驱动泵 CQ Magnetic Drive Pumps

▶ 型号意义 Designation



▶ 产品特点 Product Features

- CQ型泵具有结构简单、外型美观、体积小、噪音低、运转可靠、使用维修方便等优点。磁传动部分采用铁氧体为主要的材料，过流部分采用不锈钢，是目前应用最广泛的无泄漏泵。
- CQ type pump owns advantages such as simple structure, nice appearance, small body, little noise, reliable in operation, easy to operate and convenient to maintain. The magnetic drive part is mainly made of ferrite, and overflow part is made of stainless steel. Currently it is the no-leakage pump applied most widely.

▶ 产品用途 Product Applications

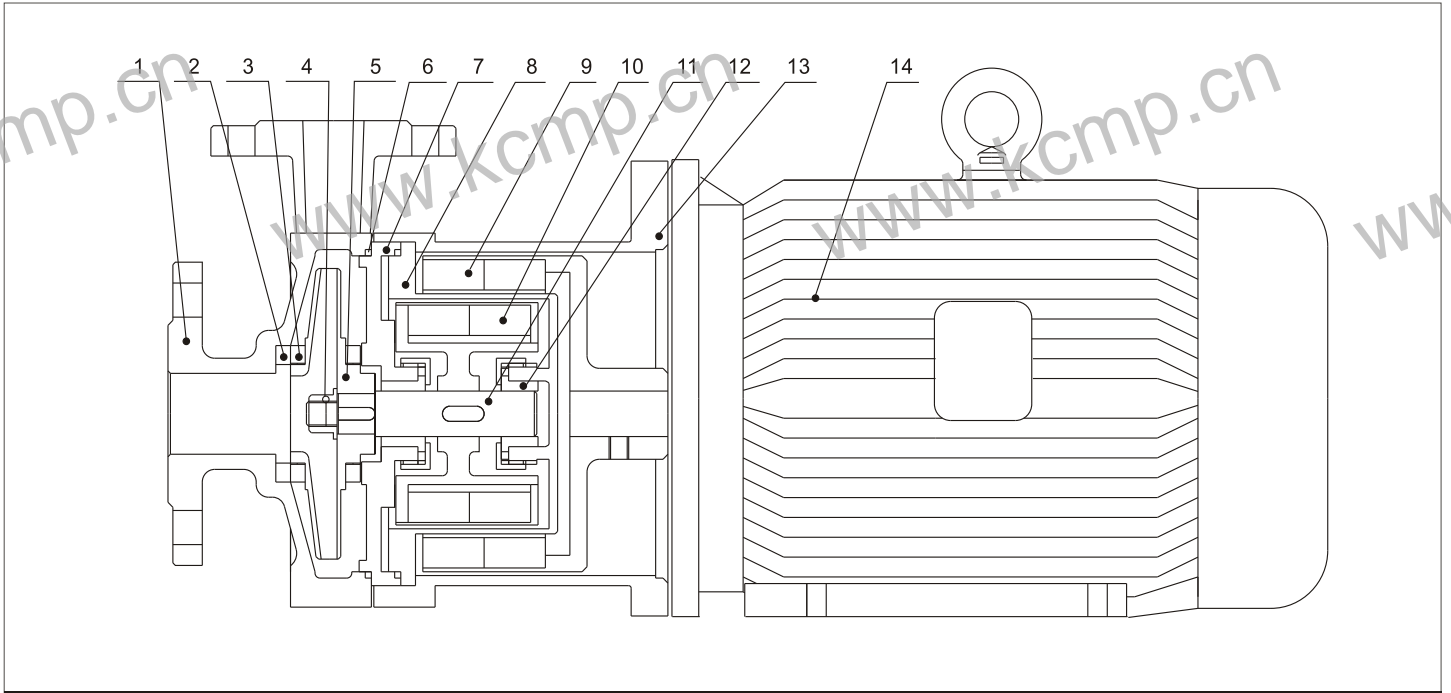
- 适用于抽送酸碱液、油类、稀有贵重液、毒液、挥发性液体等化学介质，特别适用于抽送易燃、易爆液体等。
- It is applicable in pumping chemical media such as acid and alkali liquids, oil, rare and valuable liquids, poisonous liquids and volatile liquids etc. It is especially applicable in pumping flammable and explosive liquids.

▶ 主要性能参数 Main Performance Parameters

- | | |
|---|---|
| • 过流部件材质: 不锈钢(奥氏体) | • Material of Wet Parts: Stainless Steel (Austenite) |
| • 联接方式: 法兰、管子 | • Connecting Type: Flange or Pipe |
| • 流量 Q: 1.2~60 m ³ /h | • Flow Q: 1.2~60m ³ /h |
| • 扬程 H: 5~50 m | • Head H: 5~50m |
| • 功率 N: 0.12~22kW | • Power N: 0.12~22kW |
| • 介质的运动粘度: $\leq 30 \times 10^{-6} \text{m}^3/\text{s}$ | • Kinematic Viscosity of medium: $\leq 30 \times 10^{-6} \text{m}^3/\text{s}$ |
| • 介质温度(t): -20℃~100℃ | • Medium Temperature (t): -20℃~100℃ |

CQ型泵结构图及材料表 Structural Drawing and Material Table of CQ Pumps

结构图 Structural Drawing



材料表 Material Table

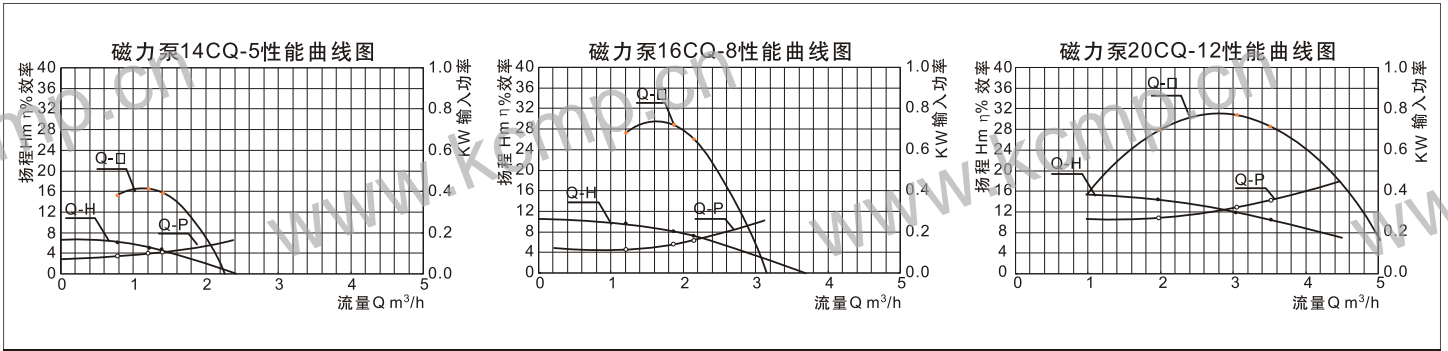
序号 No.	零件名称 Name of part	材质或型号 Material or model	序号 No.	零件名称 Name of part	材质或型号 Material or model
1	泵体 Pump body	ZG1Cr18Ni9Ti	8	隔离套 Spacer sleeve	1Cr18Ni9Ti
2	静环 Stationary ring	陶瓷、氮化硅 Ceramic or nitrogen silicide	9	外磁钢总成 Assembly of outer magnet steel	铁氧体 Ferrite
3	动环 Rotating ring	填充四氟 Packing PTFE	10	内磁钢总成 Assembly of inner magnet steel	铁氧体 Ferrite
4	叶轮螺母 Impeller nut	1Cr18Ni9Ti	11	泵轴 Pump shaft	1Cr18Ni9Ti
5	叶轮 Impeller	ZG1Cr18Ni9Ti	12	轴套 Axle sleeve	填充四氟 Packing PTFE
6	密封圈 Sealing ring	氟橡胶/F4 Acrylonitrile-butadiene rubber/F4	13	联接架 Linkup stand	HT200
7	隔板 Baffle	ZG1Cr18Ni9Ti	14	电机 Motor	Y(Y2)或 YB系列 Y(Y2) or YB

用户可根据被输送介质的腐蚀性程度对泵的过流部分主要零件选用不同材料。泵的过流部分主要零件的材料及其代号如下：
main parts of flow-through parts may be different materials according to the corrosion extent of the medium to be delivered. The materials for main parts of pump flow-through parts and their codes are stated as following:

材料 material	ZG1Cr18Ni9	ZG1Cr18Ni9Ti	ZG0Cr18Ni12Mo2Ti	ZG1Cr18Ni12Mo2Ti	ZG00Cr17Ni14Mo2	ZG1Cr18Mn13Mo2CuN
代号 No.	303	305	306	307	316L	402

CQ型泵性能曲线图、性能参数表及安装尺寸图表 Performance Curve, Performance Parameters Table and Installation Dimensions Drawing、Table of CQ Pumps

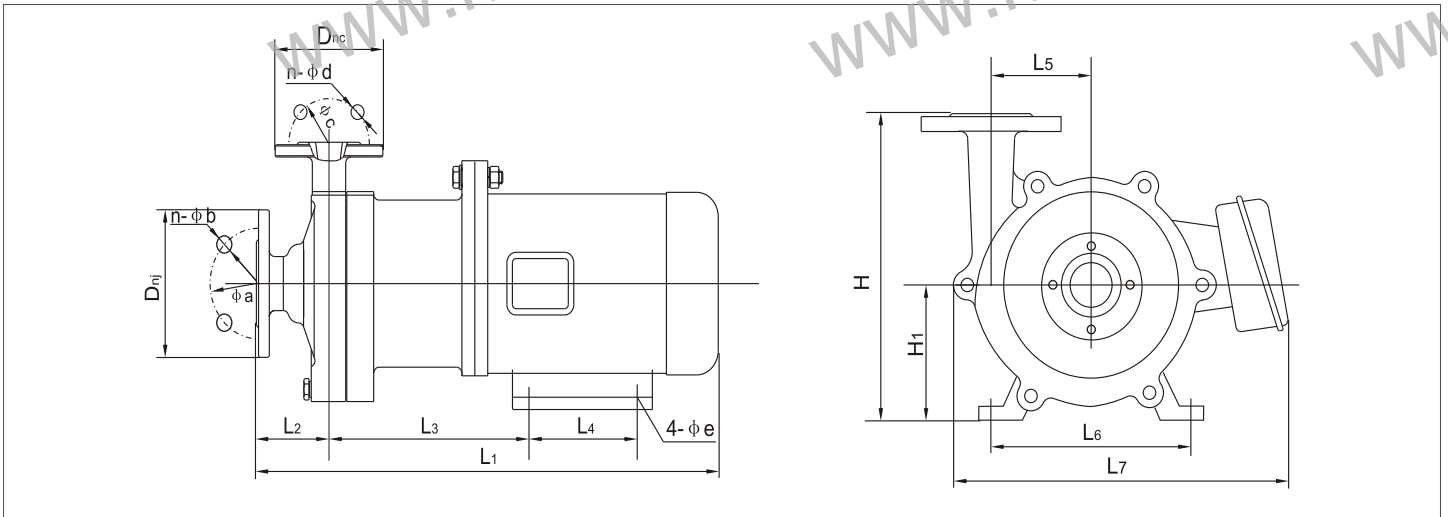
性能曲线图 Performance Curve



性能参数表 Performance Parameters

Type 泵型号	口径 Caliber (mm) 进口 Inlet 出口 Outlet		Q m^3/h Capacity 流量	Head (m) 扬程	(NPSH)r (m) 汽蚀余量	Power kw 电机功率	r/min speed 转速	Voltage (V) 电压
14CQ-5	14	10	1.2	5	6.0	0.12	2800	220/380
16CQ-8	16	12	1.8	8	6.0	0.18	2800	220/380
20CQ-12	20	12	3	12	6.0	0.37	2800	220/380

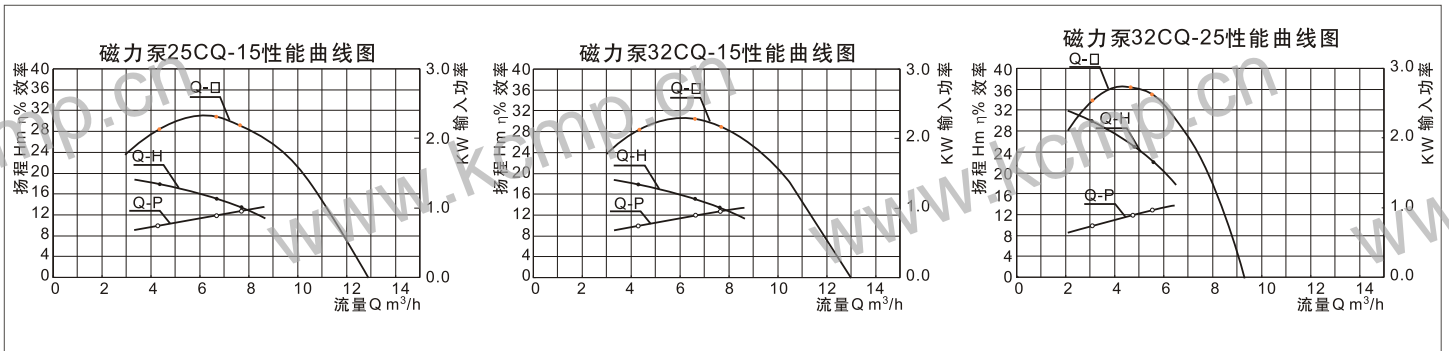
安装尺寸图 Installation Dimensions Drawing



安装尺寸表 Installation Dimensions

Type 泵型号	Dnj	a	n-φb	Dnc	c	n-φd	e	L1	L2	L3	L4	L5	L6	L7	H	H1	
14CQ-5	管子连接 Pipe connection							7	320	61.5	115	71	45	90	130	150	56
16CQ-8								7	320	61.5	115	71	45	90	130	150	56
20CQ-12								8	350	59.5	135.5	80	54	100	160	166	63

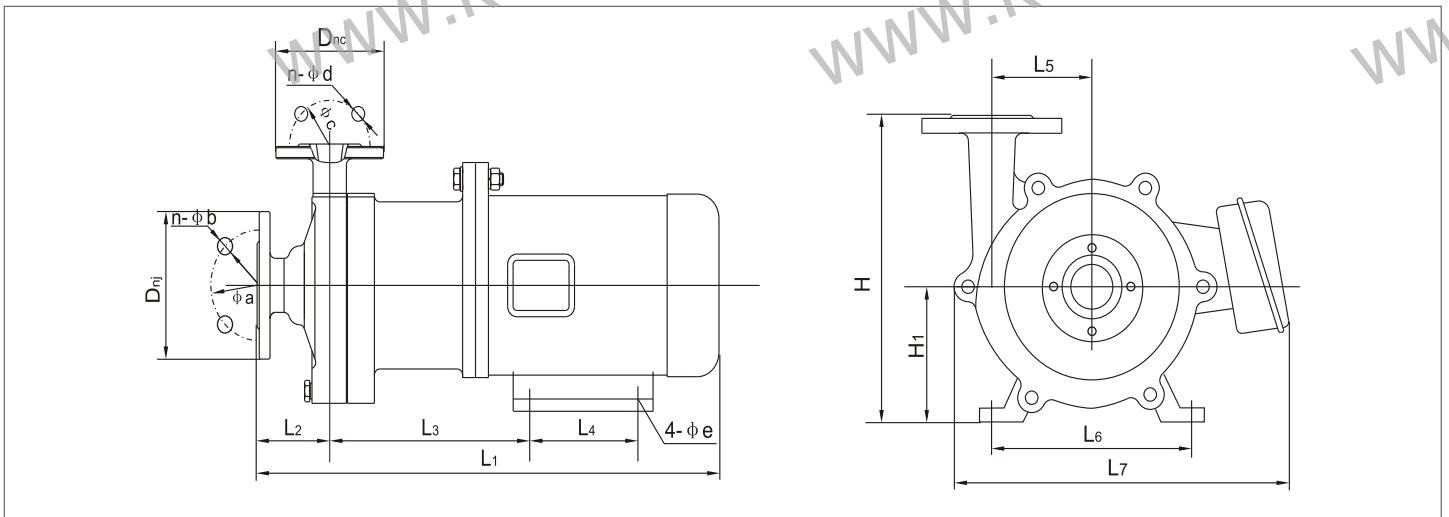
▶ **性能曲线图** Performance Curve



▶ **性能参数表** Performance Parameters

Type 泵型号	口径 Caliber (mm) 进口 Inlet / 出口 Outlet		Q m^3/h Capacity 流量	Head (m) 扬程	(NPSH) _r (m) 汽蚀余量	Power kw 电机功率	Speed (r/min) 转速	Voltage (V) 电压
25CQ-15	25	20	6.6	15	6.0	1.1	2800	380
32CQ-15	32	25	6.6	15	6.0	1.1	2800	380
32CQ-25	32	25	4.8	25	5.5	1.1	2800	380

▶ **安装尺寸图** Installation Dimensions Drawing

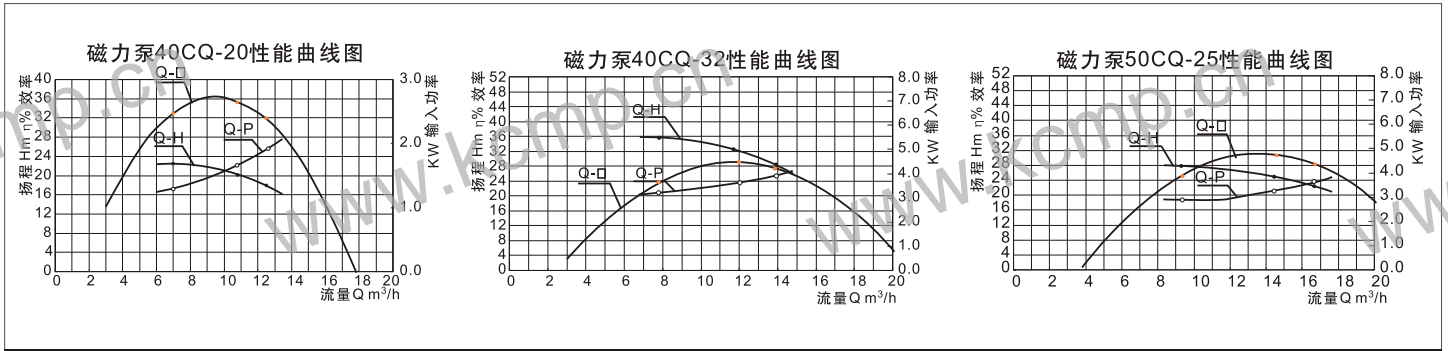


▶ **安装尺寸表** Installation Dimensions

Type 泵型号	D _{nj}	a	n-φD	D _{nc}	c	n-φd	e	L ₁	L ₂	L ₃	L ₄	L ₅	L ₆	L ₇	H	H ₁
25CQ-15	100	75	4-φ12	90	65	4-φ12	10	460	67.5	184	100	71.5	125	240	210	80
32CQ-15	120	90	4-φ12	100	75	4-φ12	10	460	67.5	184	100	71.5	125	240	210	80
32CQ-25	120	90	4-φ12	100	75	4-φ12	10	460	70	187.5	100	85	125	260	240	80

CQ型泵性能曲线图、性能参数表及安装尺寸图表 Performance Curve, Performance Parameters Table and Installation Dimensions Drawing、Table of CQ Pumps

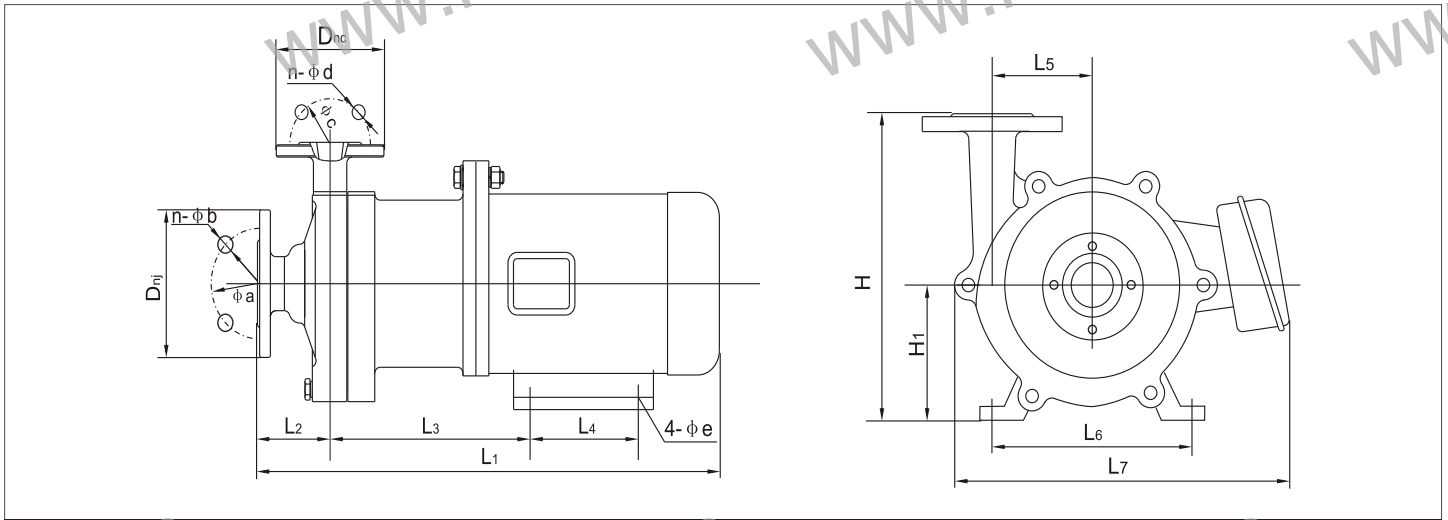
性能曲线图 Performance Curve



性能参数表 Performance Parameters

Type 泵型号	口径 Caliber (mm) 进口 Inlet 出口 Outlet		Q \rightarrow m ³ /h Capacity 流量	Head (m) 扬程	(NPSH)r (m) 汽蚀余量	Power kw 电机功率	 r/min speed 转速	Voltage (V) 电压
40CQ-20	40	32	10.8	20	4.0	2.2	2800	380
40CQ-32	40	32	12	30	4.0	4.0	2800	380
50CQ-25	50	40	14.4	25	4.0	4.0	2800	380

安装尺寸图 Installation Dimensions Drawing

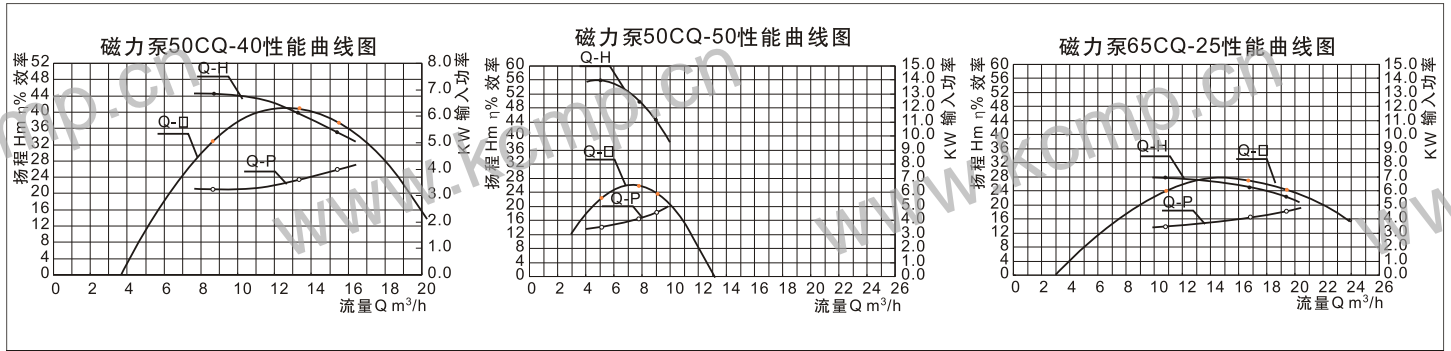


安装尺寸表 Installation Dimensions

Type 泵型号	Dnj	a	n-φb	Dnc	c	n-φd	e	L1	L2	L3	L4	L5	L6	L7	H	H1
40CQ-20	130	100	4-φ14	120	90	4-φ14	10	545	74	239	125	85.5	140	290	260	90
40CQ-32	130	100	4-φ14	120	90	4-φ14	12	620	80	260	140	90	190	336	260	112
50CQ-25	140	110	4-φ14	130	100	4-φ14	12	620	80	260	140	90	190	336	260	112

CQ型泵性能曲线图、性能参数表及安装尺寸图表 Performance Curve, Performance Parameters Table and Installation Dimensions Drawing, Table of CQ Pumps

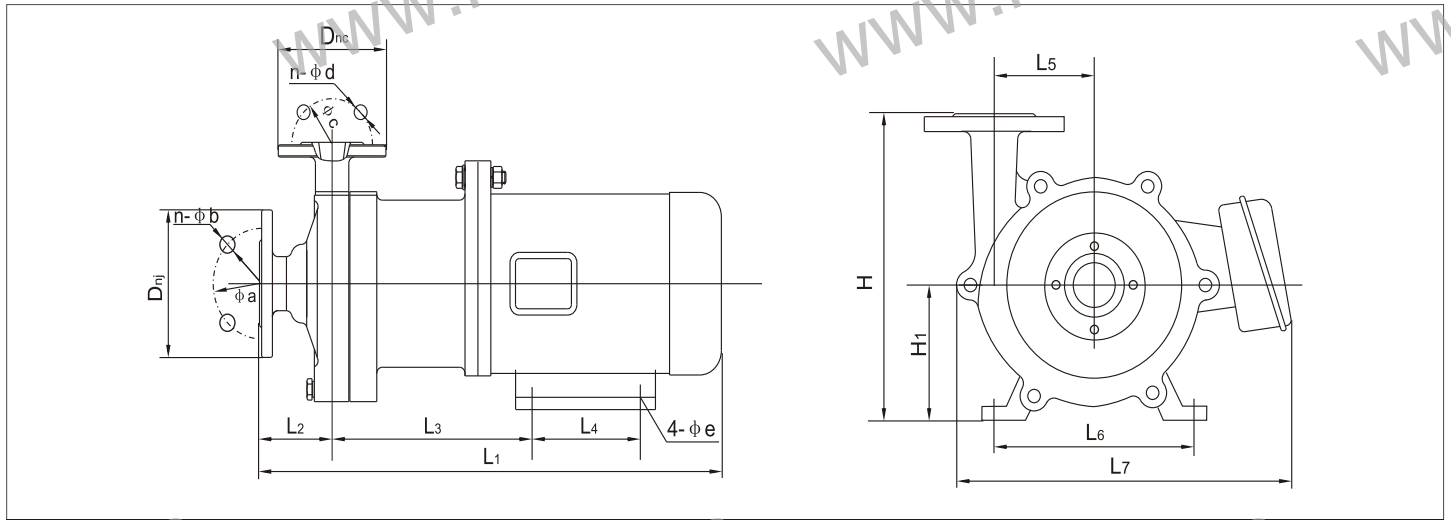
性能曲线图 Performance Curve



性能参数表 Performance Parameters

Type 泵型号	口径 Caliber (mm) 进口 Inlet 出口 Outlet		Q → m ³ /h Capacity 流量	Head (m) 扬程	(NPSH) _r (m) 汽蚀余量	Power kw 电机功率	n/min speed 转速	Voltage (V) 电压
50CQ-32	50	40	13.2	32	4.0	4.0	2800	380
50CQ-50	50	32	7.8	50	4.0	5.5	2800	380
65CQ-25	65	50	16.8	25	4.0	5.5	2800	380

安装尺寸图 Installation Dimensions Drawing

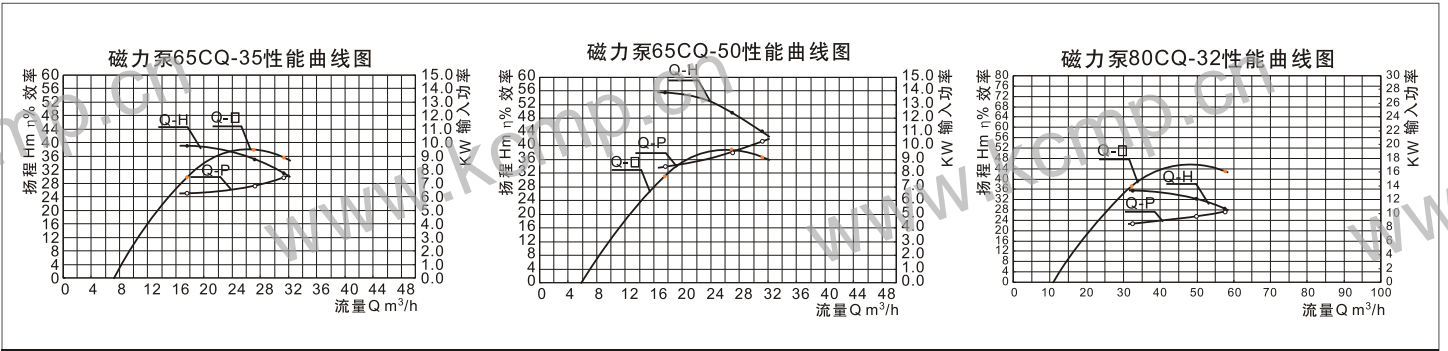


安装尺寸表 Installation Dimensions

Type 泵型号	D _{nj}	a	n-φ b	D _{nc}	c	n-φ d	e	L ₁	L ₂	L ₃	L ₄	L ₅	L ₆	L ₇	H	H ₁
50CQ-32	140	110	4-φ 14	130	100	4-φ 14	12	620	80	260	140	90	190	336	260	112
50CQ-50	140	110	4-φ 14	130	100	4-φ 14	12	695	90	305	140	0	216	350	300	132
65CQ-25	160	130	4-φ 14	140	110	4-φ 14	12	695	90	305	140	90	216	350	300	132

CQ型泵性能曲线图、性能参数表及安装尺寸图表 Performance Curve, Performance Parameters Table and Installation Dimensions Drawing, Table of CQ Pumps

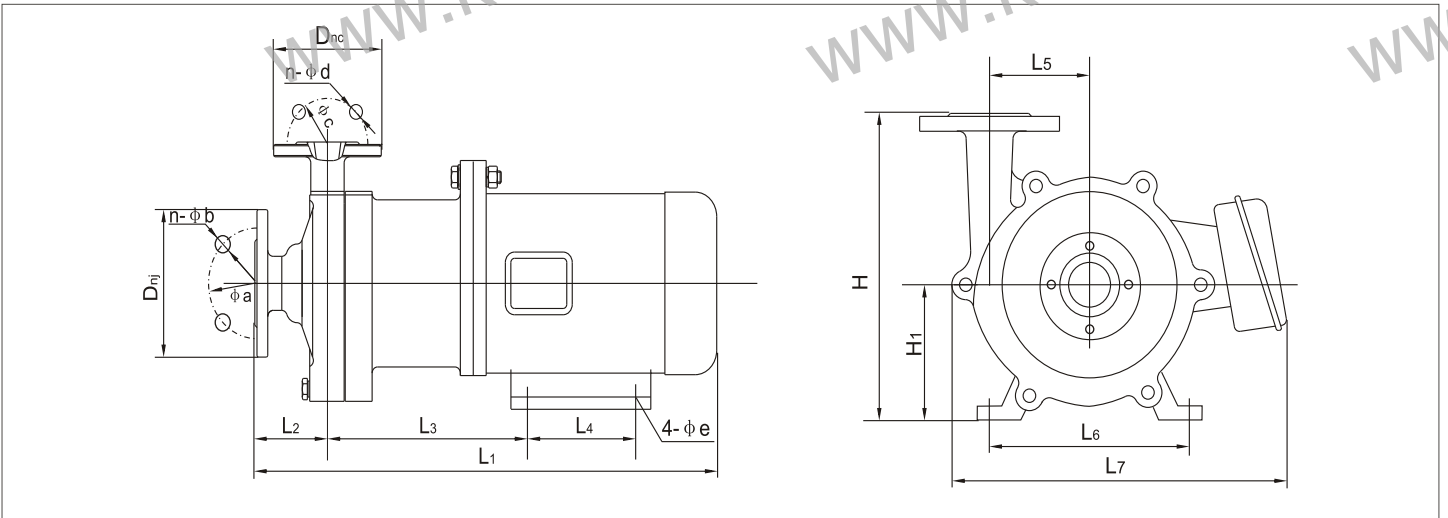
▶ **性能曲线图** Performance Curve



▶ **性能参数表** Performance Parameters

Type 泵型号	口径 Caliber (mm) 进口 Inlet / 出口 Outlet		Q m^3/h Capacity 流量	Head (m) 扬程	(NPSH) _r (m) 汽蚀余量	Power kw 电机功率	Speed (r/min) 转速	Voltage (V) 电压
65CQ-32	65	50	27	32	4.0	7.5	2800	380
65CQ-50	65	40	27	50	4.0	11	2800	380
80CQ-32	80	65	50	32	4.0	11	2800	380

▶ **安装尺寸图** Installation Dimensions Drawing



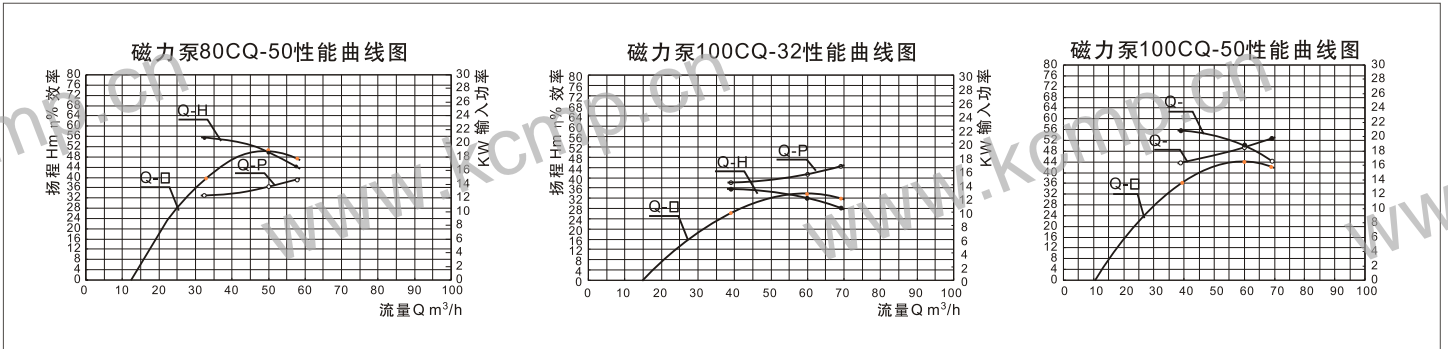
▶ **安装尺寸表** Installation Dimensions

Type 泵型号	D _{nj}	a	n-φb	D _{nc}	c	n-φd	e	L ₁	L ₂	L ₃	L ₄	L ₅	L ₆	L ₇	H	H ₁
65CQ-32	160	130	4-φ14	140	110	4-φ18	12	700	69.5	303.5	140	0	216	350	292	132
65CQ-50	185	145	4-φ18	150	110	4-φ18	15	855	95.5	373.5	210	0	254	420	365	160
80CQ-32	200	160	4-φ18	185	145	4-φ18	15	855	92.5	376.5	210	0	254	400	335	160

CQ型泵性能曲线图、性能参数表及安装尺寸图表

Performance Curve, Performance Parameters Table and Installation Dimensions Drawing, Table of CQ Pumps

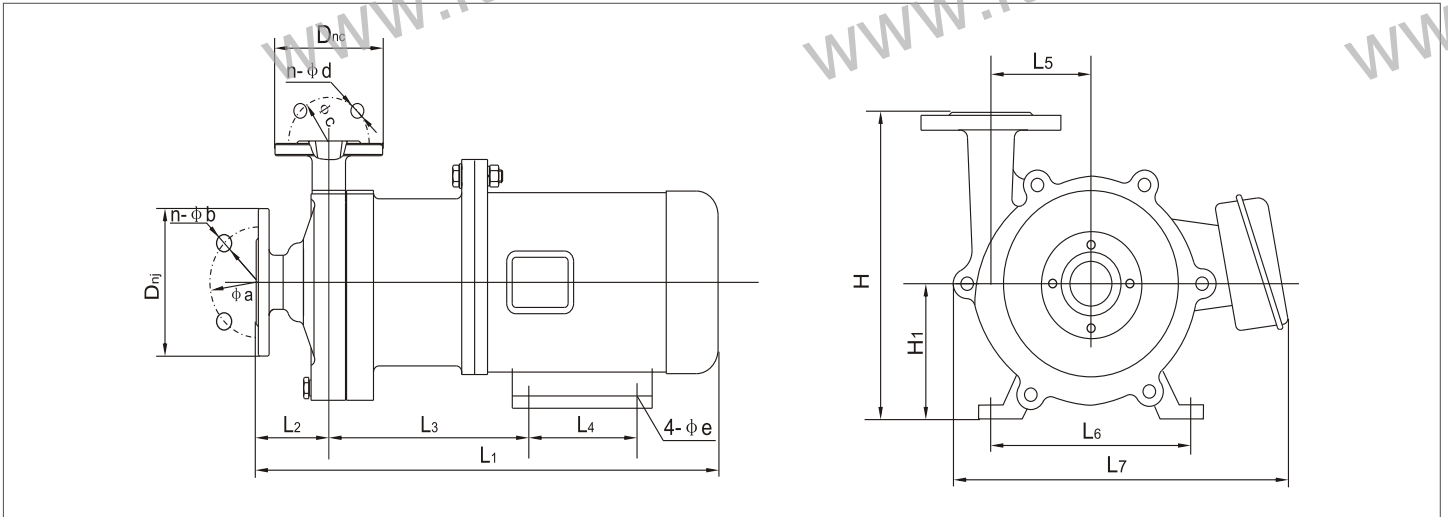
▶ **性能曲线图** Performance Curve



▶ **性能参数表** Performance Parameters

Type 泵型号	口径 Caliber (mm) 进口 Inlet 出口 Outlet		Q $\frac{m^3}{h}$ Capacity 流量	Head (m) 扬程	(NPSH)r (m) 汽蚀余量	Power $\frac{kw}{kw}$ 电机功率	r/min speed 转速	Voltage (V) 电压
80CQ-50	80	65	50	50	4.0	15	2800	380
100CQ-32	100	80	60	32	4.0	18.5	2800	380
100CQ-50	100	80	60	50	4.0	22	2800	380

▶ **安装尺寸图** Installation Dimensions Drawing



▶ **安装尺寸表** Installation Dimensions

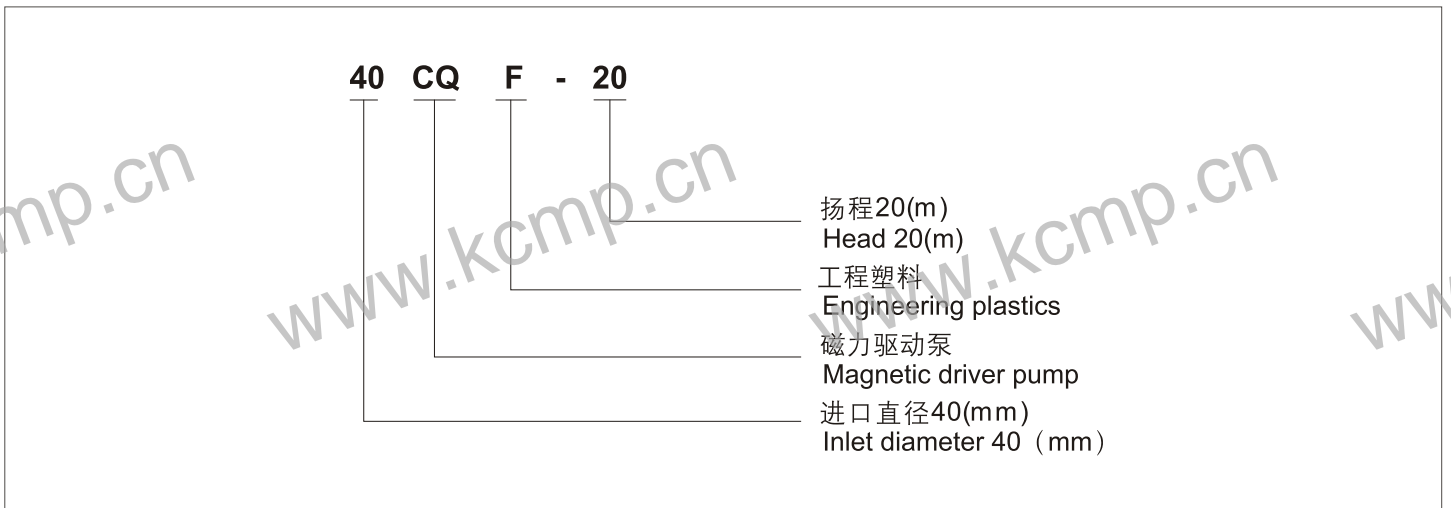
Type 泵型号	Dnj	a	n-phi b	Dnc	c	n-phi d	e	L1	L2	L3	L4	L5	L6	L7	H	H1
80CQ-50	200	160	8-phi 18	165	125	4-phi 18	15	856	95.5	373.5	210		254	420	365	160
100CQ-32	220	180	4-phi 18	200	160	4-phi 18	15	855	92.5	376.5	254		254	400	335	180
100CQ-50	220	180	8-phi 18	185	145	4-phi 18	15	1650	145	405	241		279	520	415	180

CQF型工程塑料磁力泵简介 Brief Introduction of CQF Engineering Plastics Magnetic Pumps

▶ CQF型工程塑料磁力泵 CQF Engineering Plastics Magnetic Pumps



▶ 型号意义 Designation



▶ 产品特点 Product Features

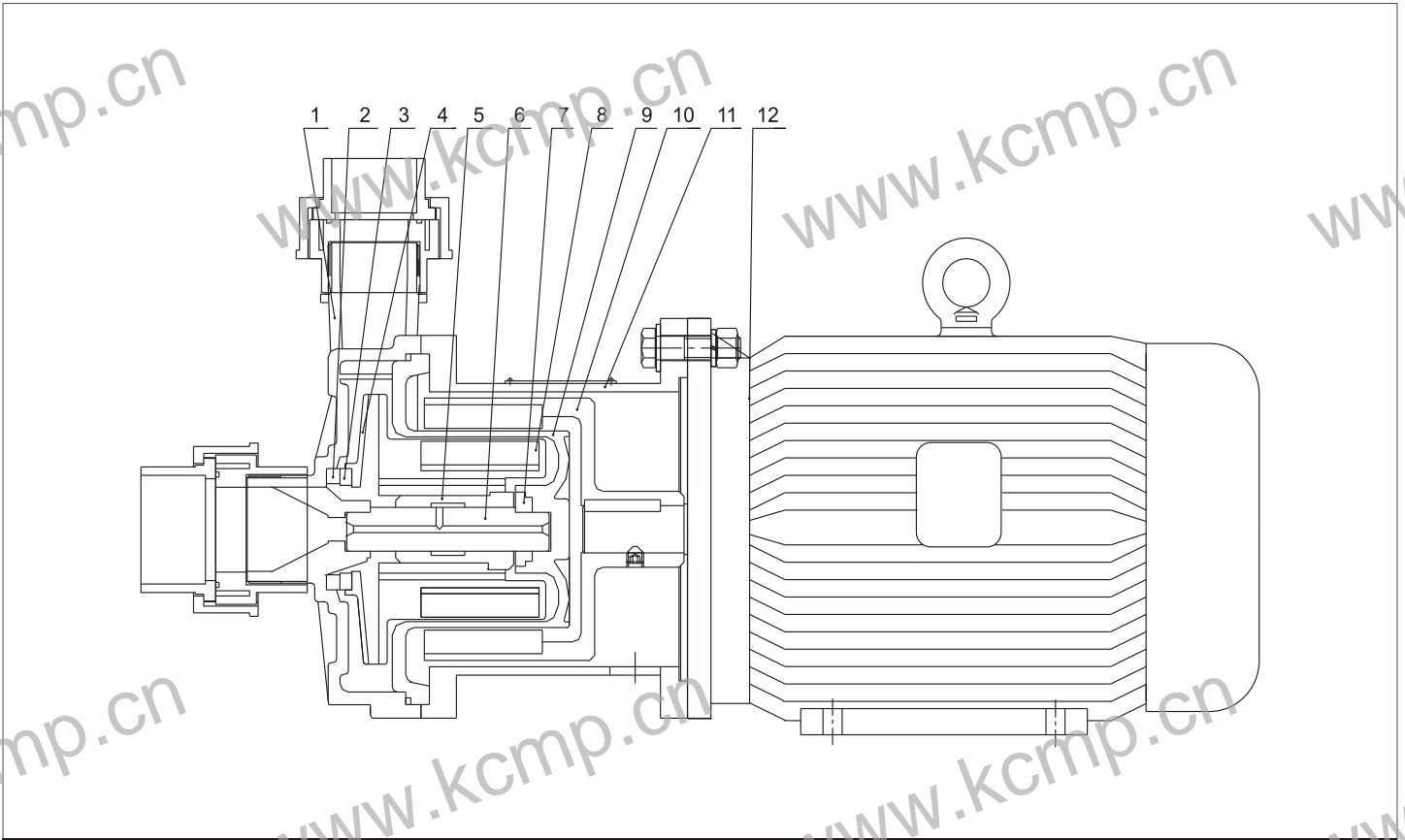
- CQF型产品以增强聚丙烯为主要材料，能耐大多数的有机和无机酸、碱和盐溶液，也适于在室外大气中暴露，对应力腐蚀破裂的抗蚀性良好。该泵零部件均为注塑成型，生产效率高，加工成本低。
- CQF pump is mainly made of reinforced polypropylene to perform resistance to most organic and inorganic acid Solution, alkali and hydrochloric. Applicable for exposed outdoors, this pump is provided with outstanding resistance to stress corrosion cracking. All components are injection moulded for high efficiency and low processing cost.

▶ 主要性能参数 Main Performance Parameters

- 过流部件材质: PP(增强聚丙烯)
- 连接方式: 软管、活接、法兰
- 流量 Q: 0.9~27 m³/h
- 扬程 H: 3~35 m
- 功率 N: 0.025~7.5 kw
- 介质的运动粘度: $\leq 30 \times 10^{-6} \text{m}^3/\text{s}$
- 介质温度(t): 0~60°C
- Material of wet parts: pp (reinforced polypropylene)
- Connecting type; flexible tube, loose joint or flange
- Flow Q: 0.9~27m³/h
- Head H: 3~35m
- Power N: 0.025~7.5kW
- Kinematic viscosity of medium: $\leq 30 \times 10^{-6} \text{m}^3/\text{s}$
- Medium temperature (t): 0~60°C

CQF型泵结构图及材料表 Structural Drawing and Material Table of CQF Pumps

结构图 Structural Drawing



材料表 Material table

序号 No.	零件名称 Name of part	材质或型号 Material or model	序号 No.	零件名称 Name of part	材质或型号 Material or model
1	泵体 Pump body	PP	7	止推环 Reaction ring	陶瓷或氮化硅 Ceramic or nitrogen silicide
2	静环 Stationary ring	陶瓷或氮化硅 Ceramic or nitrogen silicide	8	内磁钢总成 Assembly of inner magnet steel	铁氧体 Ferrite
3	动环 Rotating ring	填充四氟 Packing PTFE	9	隔离套 Spacer sleeve	PP或PPS PP or PPS
4	叶轮 Impeller	PP	10	外磁钢总成 Assembly of outer magnet steel	铁氧体 Ferrite
5	轴套 Axle sleeve	填充四氟 Packing PTFE	11	联接架 Linkup stand	增强聚丙烯或HT200 Reinforced polypropylene or Ht200
6	泵轴 Pump shaft	陶瓷或氮化硅 Ceramic or nitrogen silicide	12	电机 Motor	Y Y2 或 YB Y(Y2) or YB

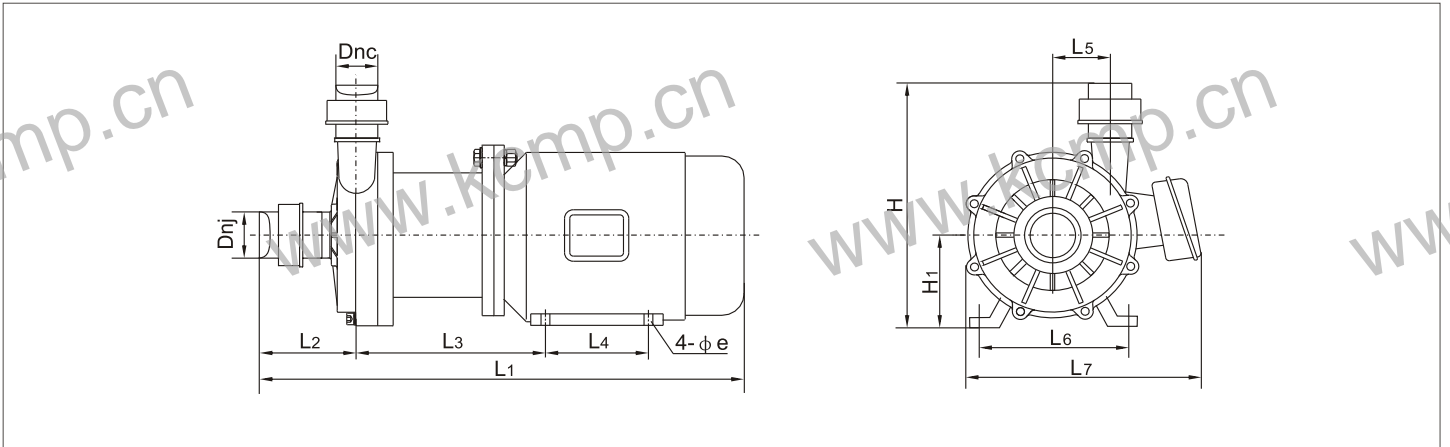
CQF型泵性能参数表及安装尺寸图表

Performance Parameters Table and Installation Dimensions Drawing、Table of CQF Pumps

性能参数表 Performance Parameters

Type 泵型号	口径 Caliber (mm) 进口 Inlet 出口 Outlet		Q $\frac{m^3}{h}$ Capacity 流量	Head (m) 扬程	(NPSH)r (m) 汽蚀余量	Power $\frac{kw}{kw}$ 电机功率	$\frac{r}{min}$ speed 转速	Voltage (V) 电压
10CQF-3	10	8	0.9	3	7.8	0.025	2800	220
14CQF-5	14	10	1.2	5	7.0	0.12	2800	220/380
16CQF-8	16	10	1.8	8	6.0	0.18	2800	220/380
20CQF-12	20	15	3	12	6.0	0.37	2800	220/380
25CQF-15	25	20	6.6	15	5.0	1.1	2800	380
32CQF-15	32	25	6.6	15	6.0	1.1	2800	380
32CQF-25	32	25	4.8	25	5.5	1.1	2800	380
40CQF-20	40	32	10.8	20	3.5	2.2	2800	380
50CQF-32	50	40	12.5	32	3.5	4.0	2800	380

安装尺寸图 Installation Dimensions Drawing



安装尺寸表 Installation Dimensions

Type 泵型号	Dnj	Dnc	L1	L2	L3	L4	L5	L6	L7	e	H	H1
10CQF-3	16	15	200	40	60	50	25	68	75	6	100	45
14CQF-5	25	16	300	44	75	70	40	90	110	8	115	56
16CQF-8	25	16	305	44	110	70	40	90	110	8	136	56
20CQF-12	27	18	350	60	140	80	50	100	140	8	170	70
25CQF-15	32	25	490	110	180	100	60	125	235	10	250	80
32CQF-15	40	32	490	110	180	100	60	125	235	10	250	80
32CQF-25	40	32	500	120	185	100	70	125	255	10	270	80
40CQF-20	50	32	565	120	200	125	80	140	267	10	280	90
50CQF-32	65	50	650	130	240	140	80	190	280	12	350	112

注: CQF性能曲线图同CQ。

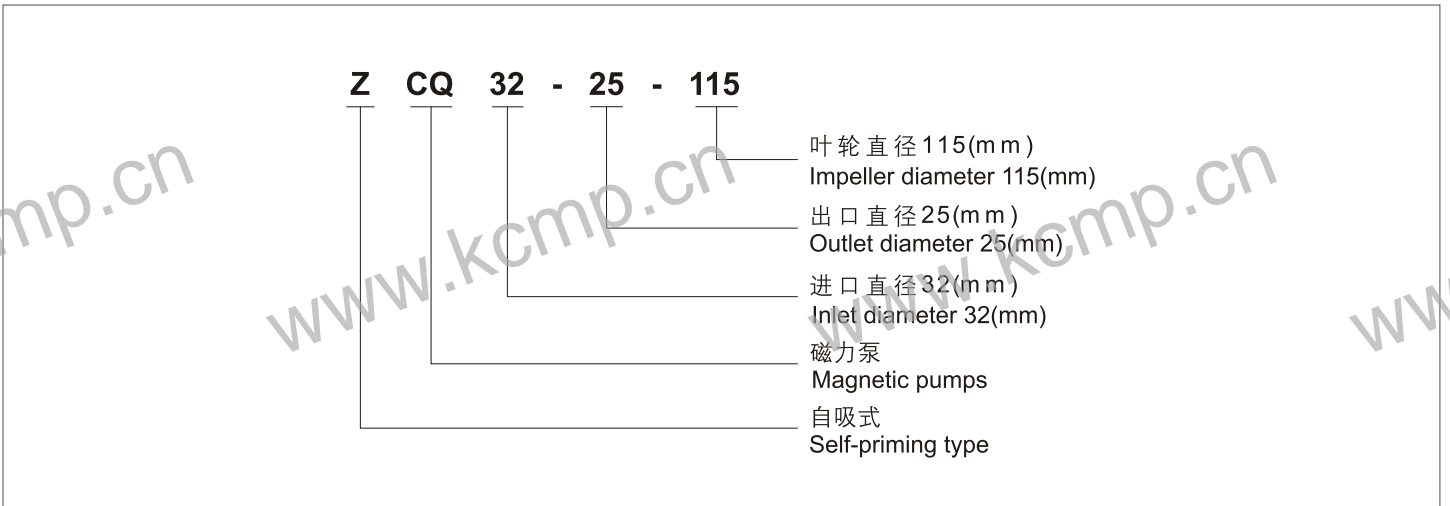
Note: Performance curve of CQF is as same as CQ.

ZCQ型自吸式磁力泵简介 Brief Introduction of ZCQ Self-Priming Magnetic Pumps

▶ ZCQ型自吸式磁力泵 ZCQ Self-Priming Magnetic Pumps



▶ 型号意义 Designation



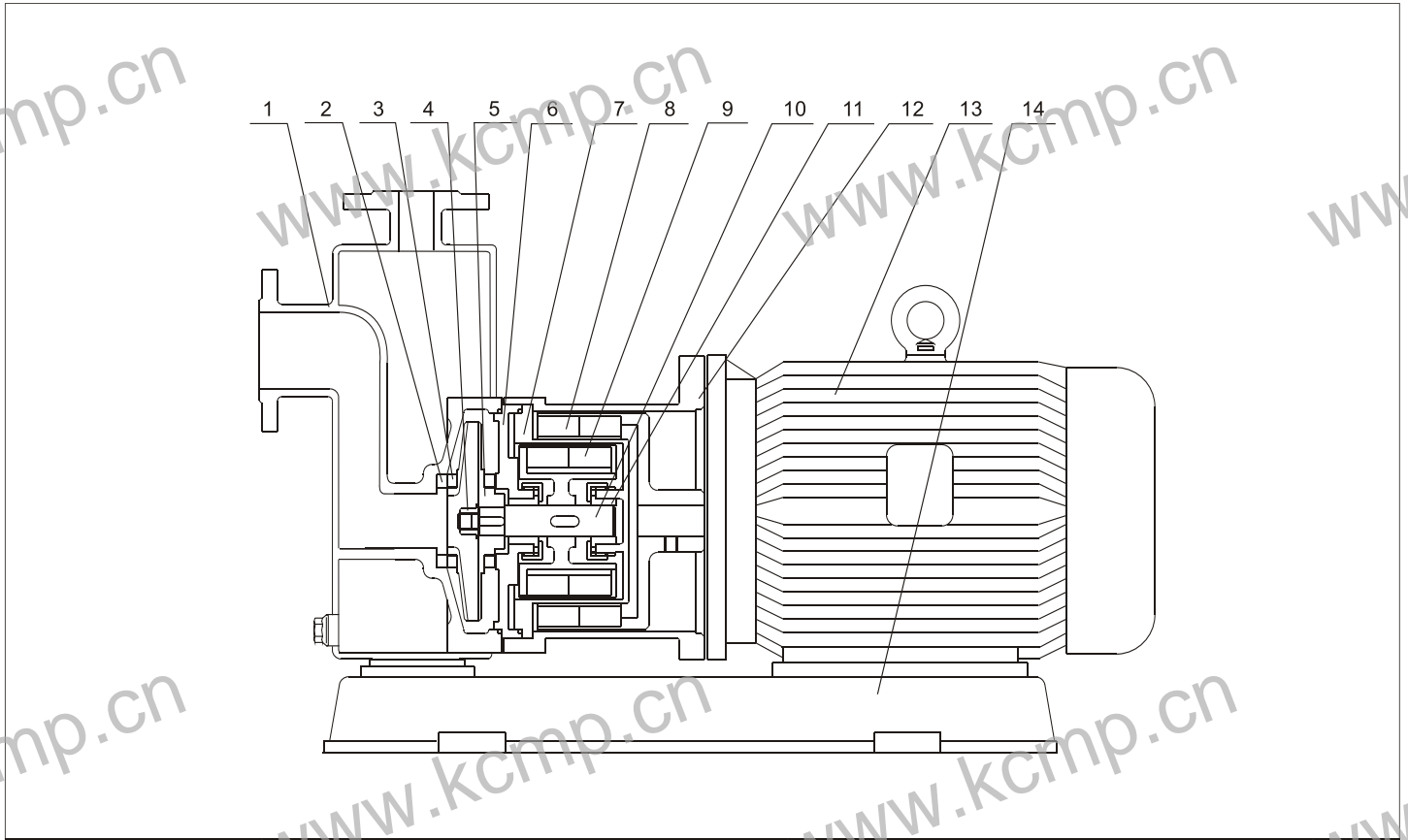
▶ 产品特点 Product Features

- 自吸泵顾名思义，就是泵起动前不需引灌水，经短时间运转，靠泵本身的作用，把水吸上来，投入正常运转。ZCQ型自吸式磁力泵，不但具有自吸功能，而且为磁力驱动结构，具有全密封、无泄漏的特点，是自动化远距离控制和流动使用的理想泵。
- Just as its name implies, self-priming pump doesn't need priming water before start. After a short time of running, water is absorbed by pump itself for normal operation. ZCQ self-priming magnetic pump is not only provided with self-priming function, but also of magnetism-driven structure. Featured by full seal and leak-tightness, it is an optimal pump for automated distant control and for floating uses.

▶ 主要性能参数 Main Performance Parameters

- | | |
|---|---|
| • 过流部件材质: 不锈钢(奥氏体) | • Material of Wet Parts: Stainless Steel (Austenite) |
| • 联接方式: 法兰 | • Connecting Type: Flange |
| • 流量 Q: 3 ~ 27 m ³ /h | • Flow Q: 3~27m ³ /h |
| • 扬程 H: 12 ~ 50 m | • Head H: 12~50m |
| • 功率 N: 0.37 ~ 7.5 kw | • Power N: 0.37~7.5kw |
| • 介质的运动粘度: $\leq 30 \times 10^{-6} \text{m}^3/\text{s}$ | • Kinematic Viscosity of medium: $\leq 30 \times 10^{-6} \text{m}^3/\text{s}$ |
| • 介质温度(t): -20 ~ 100℃ | • Medium Temperature (t): -20~100℃ |

结构图 Structural Drawing



材料表 Material Table

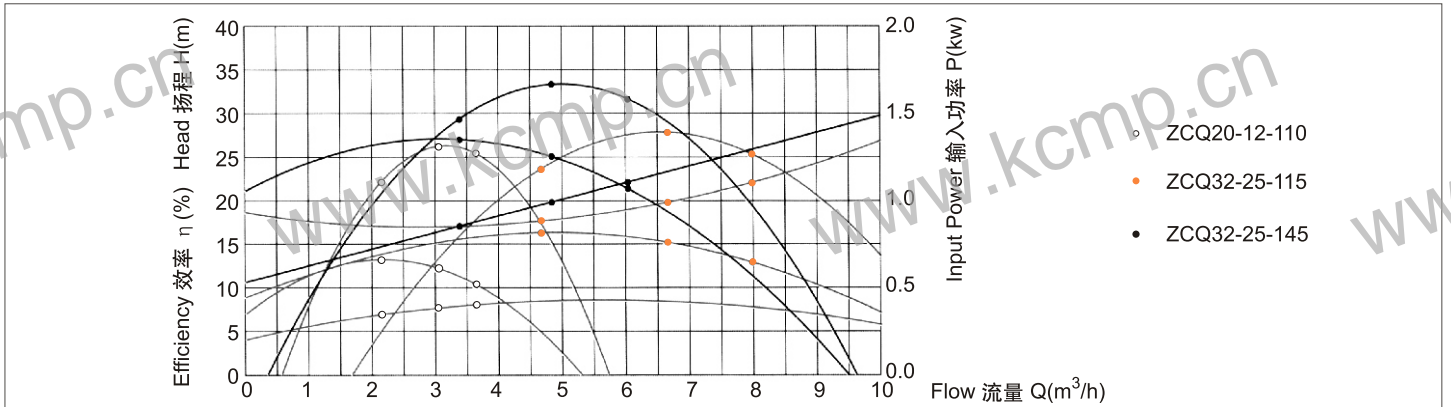
序号 No.	零件名称 Name of part	材质或型号 Material or model	序号 No.	零件名称 Name of part	材质或型号 Material or model
1	泵体 Pump body	ZG1Cr18Ni9Ti	8	外磁钢总成 Assembly of outer magnet steel	铁氧体 Ferrite
2	静环 Stationary ring	陶瓷、氮化硅 Ceramic or nitrogen silicide	9	内磁钢总成 Assembly of inner magnet steel	铁氧体 Ferrite
3	动环 Rotating ring	填充四氟 Packing PTFE	10	泵轴 Pump shaft	1Cr18Ni9Ti
4	叶轮螺母 Impeller nut	1Cr18Ni9Ti	11	轴套 Axle sleeve	填充四氟 Packing PTFE
5	叶轮 Impeller	ZG1Cr18Ni9Ti	12	联接架 Linkup stand	HT200
6	隔板 Baffle	ZG1Cr18Ni9Ti	13	电机 Motor	Y(Y2)或 YB系列 Y(Y2) or YB
7	隔离套 Sealing ring	1Cr18Ni9Ti	14	底座 Base	HT200

用户可根据被输送介质的腐蚀性程度对泵的过流部分主要零件选用不同材料。泵的过流部分主要零件的材料及其代号如下：
main parts of flow-through parts may be different materials according to the corrosion extent of the medium to be delivered. The materials for main parts of pump flow-through parts and their codes are stated as following:

材料 material	ZG1Cr18Ni9	ZG1Cr18Ni9Ti	ZG0Cr18Ni12Mo2Ti	ZG1Cr18Ni12Mo2Ti	ZG00Cr17Ni14Mo2	ZG1Cr18Mn13Mo2CuN
代号 No.	303	305	306	307	316L	402

ZCQ型泵性能曲线图、性能参数表及安装尺寸图表 Performance Curve, Performance Parameters Table and Installation Dimensions Drawing、Table of ZCQ Pumps

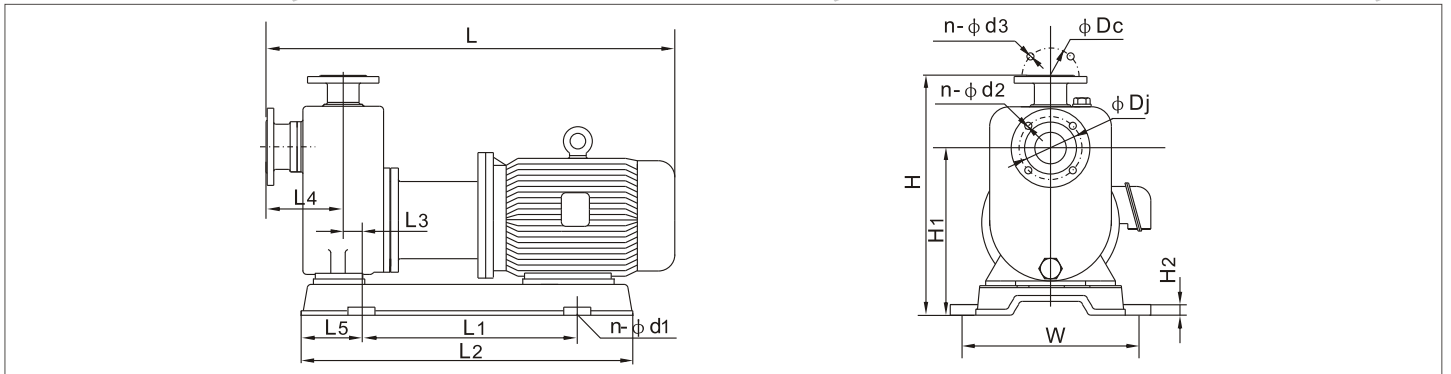
性能曲线图 Performance Curve



性能参数表 Performance Parameters

Type 泵型号	口径 Caliber (mm) 进口 Inlet 出口 Outlet		Q m^3/h Capacity 流量	Head (m) 扬程	(NPSH)r (m) 汽蚀余量	Power kw 电机功率	r/min speed 转速	Voltage (V) 电压
ZCQ20-12-110	20	12	3	12	6.0	0.37	2800	220/380
ZCQ25-20-115	25	20	5.4	15	6.0	1.1	2800	380
ZCQ32-25-115	32	25	4.8	15	6.0	1.1	2800	380
ZCQ32-25-145	32	25	4.8	25	5.5	1.1	2800	380
ZCQ40-32-132	40	32	10.8	20	4.0	2.2	2800	380
ZCQ40-32-160	40	32	12	32	4.0	4.0	2800	380
ZCQ50-40-145	50	40	14.4	25	4.0	4.0	2800	380

安装尺寸图 Installation Dimensions Drawing



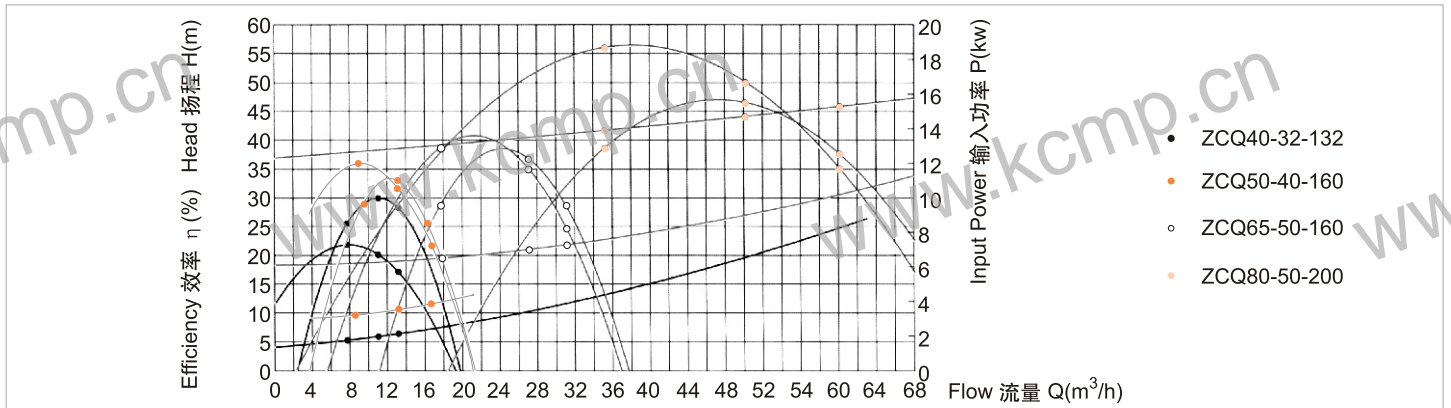
安装尺寸表 Installation Dimensions

Type 泵型号	L	H	底盘 Chassis			进口法兰 Inlet flange		出口法兰 Outlet flange		H1	H2	L3	L4	L5
			L2	L1 × W	n-φd1	Dj	n-φd2	Dc	n-φd3					
ZCQ20-12-110	410	320	325	215×200	4-12	65	4-12	55	4-12	230	20	-	85	55
ZCQ25-20-115	520	340	450	285×250	4-14	75	4-14	65	4-12	240	20	-	100	80
ZCQ32-25-115	520	340	450	285×250	4-14	90	4-14	75	4-12	240	20	-	100	80
ZCQ32-25-145	570	360	450	285×260	4-14	90	4-14	75	4-12	270	20	-	100	80
ZCQ40-32-132	620	370	510	350×280	4-14	100	4-14	90	4-11	270	20	10	110	80
ZCQ40-32-160	665	400	510	370×330	4-16	100	4-14	90	4-11	300	20	55	110	125
ZCQ50-40-145	660	400	510	370×330	4-16	110	4-14	100	4-14	270	20	55	110	70

ZCQ型泵性能曲线图、性能参数表及安装尺寸图表

Performance Curve, Performance Parameters Table and Installation Dimensions Drawing, Table of ZCQ Pumps

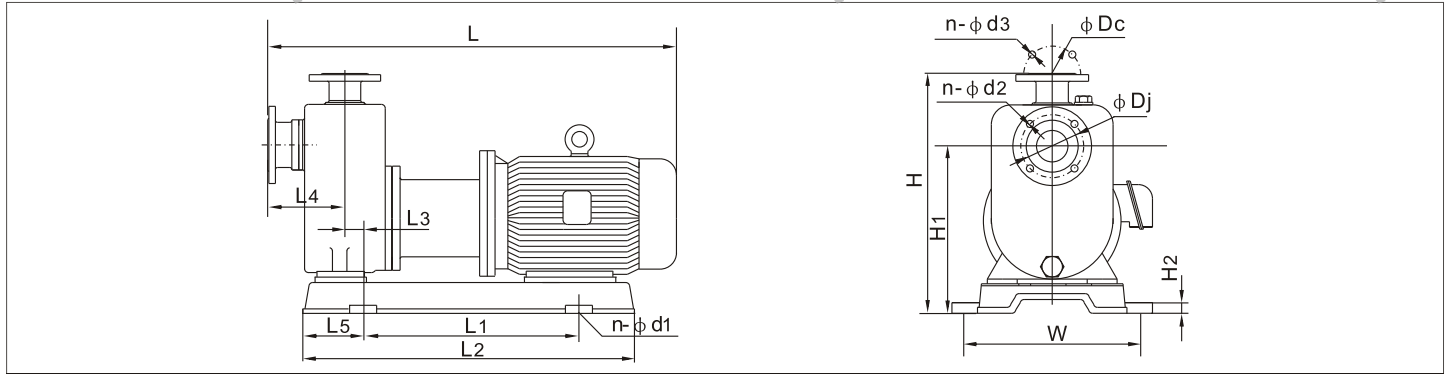
▶ 性能曲线图 Performance Curve



▶ 性能参数表 Performance Parameters

Type 泵型号	口径 Caliber (mm) 进口 Inlet 出口 Outlet		Q \rightarrow m ³ /h Capacity 流量	Head (m) 扬程	(NPSH)r (m) 汽蚀余量	Power kw 电机功率	ω (r/min) speed 转速	Voltage (V) 电压
ZCQ50-40-160	50	40	13.2	32	4.0	4.0	2800	380
ZCQ50-32-200	50	32	7.8	50	4.0	5.5	2800	380
ZCQ65-50-145	65	50	16.8	25	4.0	5.5	2800	380
ZCQ65-50-160	65	50	27	32	4.0	7.5	2800	380
ZCQ80-65-125	80	65	50	20	4.0	7.5	2800	380
ZCQ80-65-160	80	65	50	32	4.0	15	2800	380
ZCQ80-50-200	80	50	50	50	4.0	18.5	2800	380

▶ 安装尺寸图 Installation Dimensions Drawing



▶ 安装尺寸表 Installation Dimensions

Type 泵型号	L	H	底盘 Chassis			进口法兰 Inlet flange		出口法兰 Outlet flange		H1	H2	L3	L4	L5
			L2	L1 × W	n-φ d1	Dj	n-φ d2	Dc	n-φ d3					
ZCQ50-40-160	685	400	560	370 × 330	4-16	110	4-14	100	4-14	300	20	55	110	125
ZCQ50-32-200	830	550	600	355 × 355	4-16	110	4-14	90	4-14	450	20	60	110	125
ZCQ65-50-145	760	430	600	355 × 355	4-16	130	4-14	110	4-14	310	20	60	120	125
ZCQ65-50-160	810	480	600	355 × 355	4-16	130	4-14	110	4-14	340	20	60	110	125
ZCQ80-65-125	960	630	600	520 × 316	4-14	160	4-18	145	4-18	446	20	60	200	230
ZCQ80-65-160	1060	630	750	610 × 400	4-16	160	4-18	145	4-18	446	20	80	200	230
ZCQ80-50-200	1090	680	750	610 × 400	4-16	160	4-18	125	4-18	470	20	80	200	230

▶ CQB型磁力驱动泵 CQB Magnetic Drive Pumps



▶ 型号意义 Designation

CQB 80 - 50 - 200

叶轮名义直径 (mm)
Impeller diameter (mm)

出口直径 (mm)
Outlet diameter (mm)

进口直径 (mm)
Inlet diameter (mm)

磁力驱动泵
Magnetic pump

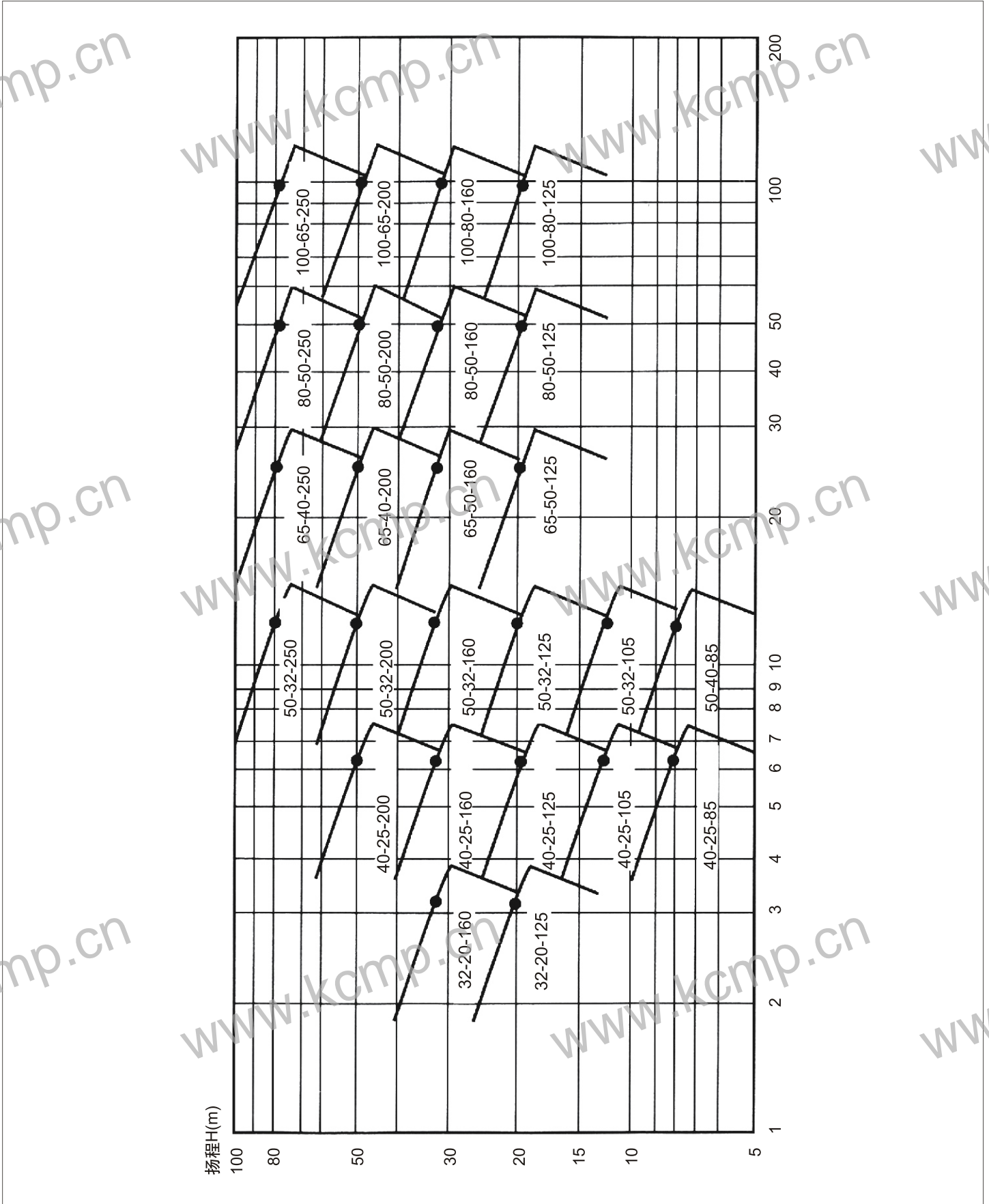
▶ 产品特点 Product Features

- 该泵过流部份采用全不锈钢材料, 对有机酸, 有机化合物, 碱、中性溶液和多种气体都有良好的耐蚀性, 双螺旋槽碳石墨轴承和硬质合金轴套的磨合, 具有较强的耐磨性, 保证了产品的寿命, 是无泄漏输送腐蚀性介质的理想泵。
- The wet parts of this pump are made of full stainless steel material to perform outstanding corrosion resistance to organic acid, organic compound, alkali, neutral solution and a great many of gases. double helix carbon Curveite bearing and hard alloy bearing are provided with good abrasion-resisting property to ensure the service life of product. it is an optimal pump for handling corrosive mediums without leakage.

▶ 主要性能参数 Main Performance Parameters

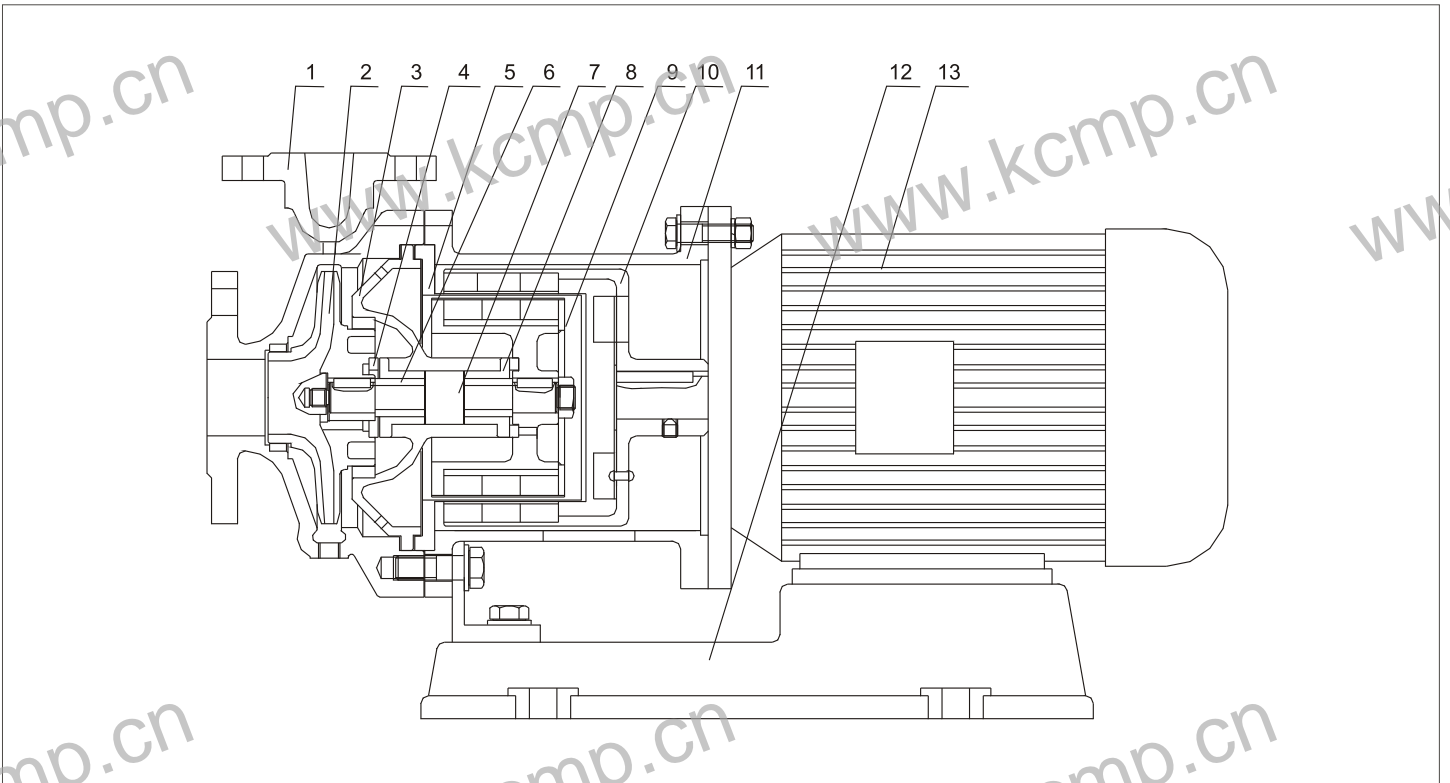
- | | |
|---|---|
| • 过流部件材质: 不锈钢(奥氏体) | • Material of wet parts: stainless steel (austenite) |
| • 联接方式: 法兰、管子 | • Connecting types: flange and pipe. |
| • 流量 Q: 1.9~120 m ³ /h | • Flow Q: 1.9~120m ³ /h |
| • 扬程 H: 20~80 m | • Head H: 20~80m |
| • 功率 N: 0.75~75 kw | • Power N: 0.75~75kw |
| • 介质的运动粘度: $\leq 30 \times 10^{-6} \text{m}^3/\text{s}$ | • Kinematic viscosity of medium: $\leq 30 \times 10^{-6} \text{m}^3/\text{s}$ |
| • 介质温度(t): -20~100℃ | • Medium temperature (t): -20~100℃ |

型谱图 Hydraulic coverage



CQB型泵结构图及材料表 Structural Drawing and Material Table of CQB Pumps

结构图 Structural Drawing



材料表 Material Table

序号 No.	零件名称 Name of part	材质或型号 Material or model	序号 No.	零件名称 Name of part	材质或型号 Material or model
1	泵体 Pump body	ZG1Cr18Ni9Ti	8	轴承 Bearing	M106K
2	叶轮 Impeller	ZG1Cr18Ni9Ti	9	内磁钢总成 Assembly of inner magnet steel	钕铁硼N33SH NdFeB N33SH
3	轴承体 Bearing body	ZG1Cr18Ni9Ti	10	外磁钢总成 Assembly of outer magnet steel	钕铁硼N33SH NdFeB N33SH
4	止推环 Reaction ring	YG8	11	联接架 Linkup stand	HT200
5	隔离套 Sealing ring	1Cr18Ni9Ti	12	底座 Base	HT200
6	轴套 Axle sleeve	YG8	13	电机 Motor	Y Y2 or YB系列 Y(Y2) or YB Series
7	泵轴 Pump shaft	1Cr18Ni9Ti			

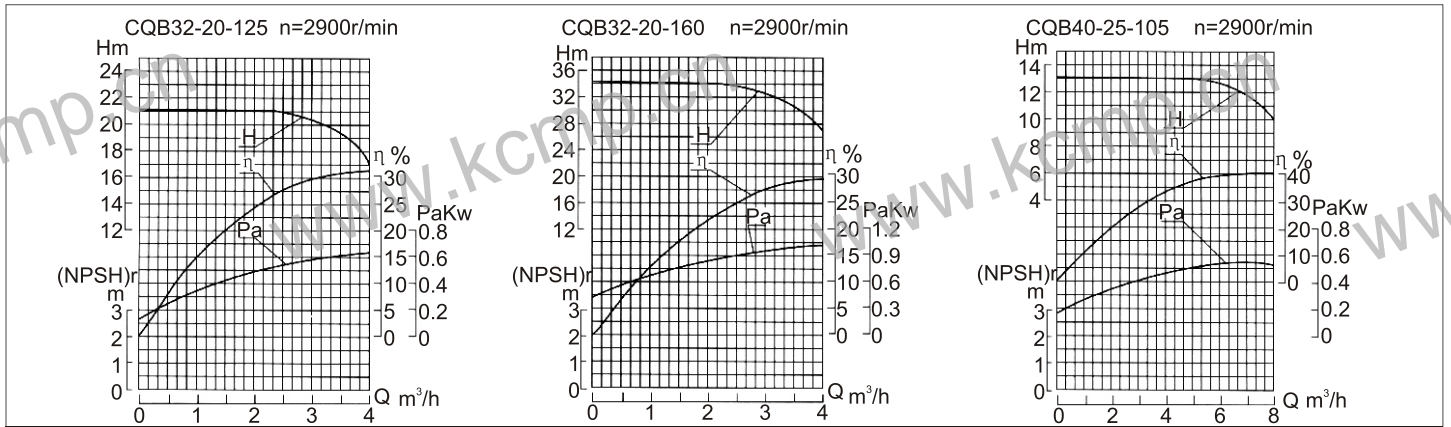
用户可根据被输送介质的腐蚀性程度对泵的过流部分主要零件选用不同材料。泵的过流部分主要零件的材料及其代号如下：
main parts of flow-through parts may be different materials according to the corrosion extent of the medium to be delivered. The materials for main parts of pump flow-through parts and their codes are stated as following:

材料 material	ZG1Cr18Ni9	ZG1Cr18Ni9Ti	ZG0Cr18Ni12Mo2Ti	ZG1Cr18Ni12Mo2Ti	ZG00Cr17Ni14Mo2	ZG1Cr18Mn13Mo2CuN
代号 No.	303	305	306	307	316L	402

CQB型泵性能曲线图、性能参数表及安装尺寸图表

Performance Curve, Performance Parameters Table and Installation Dimensions Drawing, Table of CQB Pumps

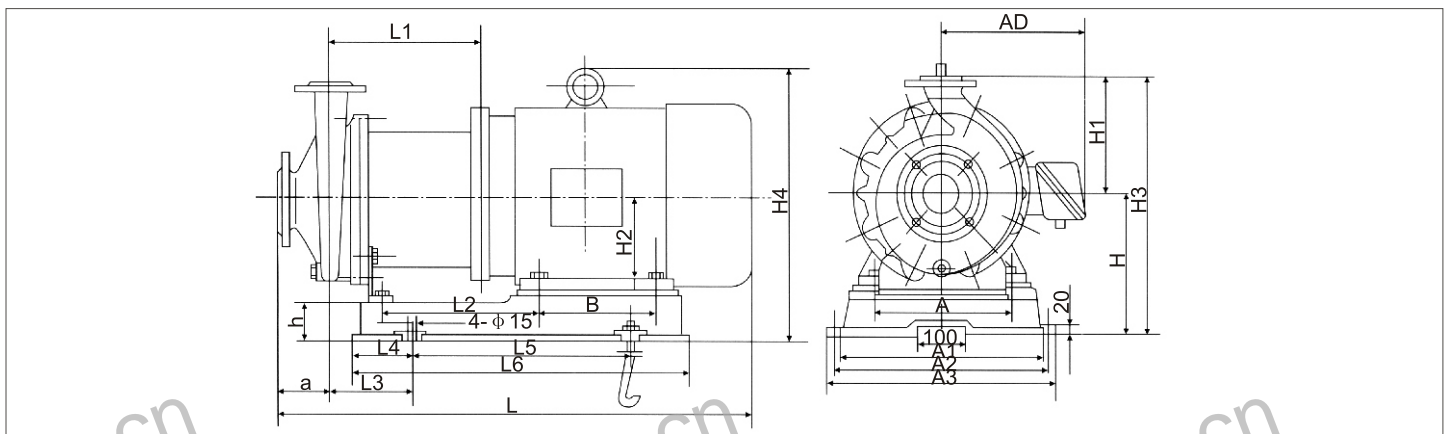
▶ **性能曲线图** Performance Curve



▶ **性能参数表** Performance Parameters

Type 泵型号	Q Capacity m³/h 流量	Head (m) 扬程	(NPSH)r (m) 汽蚀余量	r/min speed 转速	Power kw 轴功率	η % Efficiency 效率	配带电机功率 Power kw 介质密度 Medium density g/cm³		
							≤1	≤1.3	≤1.84
32-20-125	1.9	20	5.0	2900	0.49	23	YB 801-2 0.75	YB 802-2 1.1	YB 90S-2 1.5
	3.2	20			0.58	30			
	3.8	18.5			0.62	31			
32-20-160	1.9	34	3.5	2900	0.84	21	YB 802-2 1.1	YB 90S-2 1.5	YB 90L-2 2.2
	3.2	32			0.99	28			
	3.8	29			1.03	29			
40-25-105	3.8	13	6.0	2900	0.42	32	YB 801-2 0.75	YB 802-2 1.1	YB 90S-2 1.5
	6.3	12.5			0.55	39			
	7.5	11			0.56	40			

▶ **安装尺寸图** Installation Dimensions Drawing



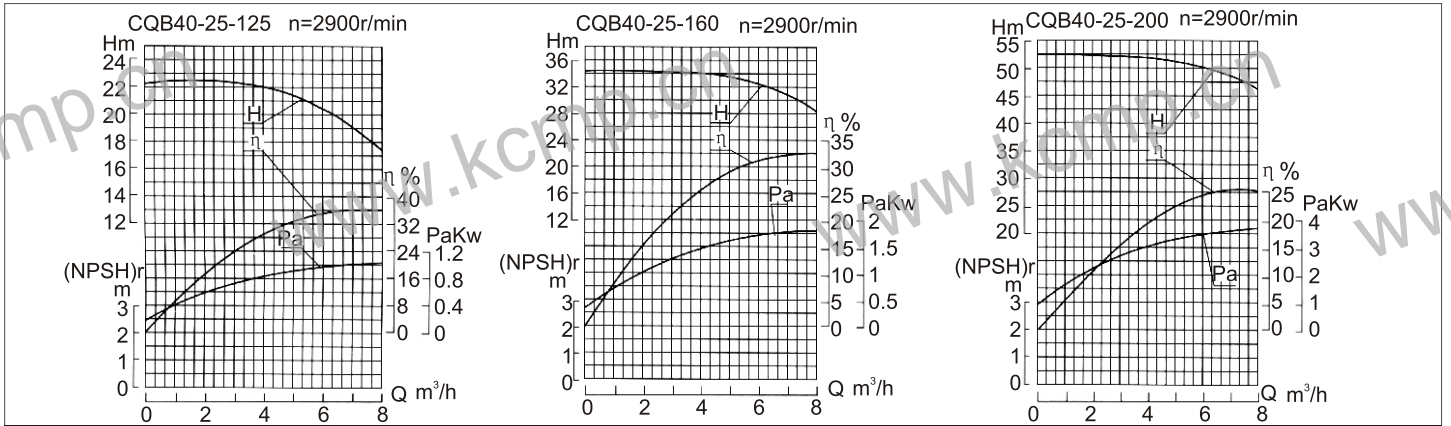
▶ **安装尺寸表** Installation Dimensions

Type 泵型号	A	AD	B	L	L1	H1	H2	a	A1	A2	A3	H	H3	H4	L2	L3	L4	L5	L6	h
32-20-125	125	150	100	458	133	120	90	65												
32-20-160	140	155	100	483	143	160	115	65												
40-25-105	125	150	100	458	133	120	90	65												

CQB型泵性能曲线图、性能参数表及安装尺寸图表

Performance Curve、Performance Parameters Table and Installation Dimensions Drawing、Table of CQB Pumps

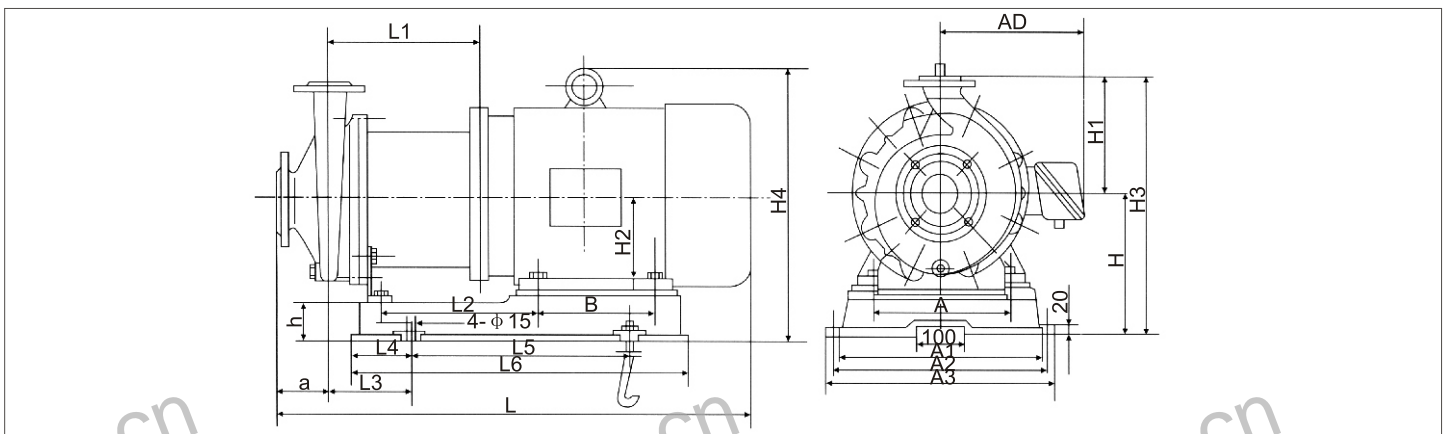
性能曲线图 Performance Curve



性能参数表 Performance Parameters

Type 泵型号	Q Capacity 流量 m³/h	Head (m) 扬程	(NPSH)r (m) 汽蚀余量	r/min 转速	Power kw 轴功率	η % 效率	配带电机功率 Power kw 介质密度 Medium density g/cm³		
							≤1	≤1.3	≤1.84
40-25-125	3.8	22	5.0	2900	0.81	28	YB 802-2 1.1	YB 90L-2 2.2	YB 100L-2 3.0
	6.3	20			0.98	35			
	7.5	18.5			1.05	36			
40-25-160	3.8	34	3.5	2900	1.41	25	YB 90L-2 2.2	YB 100L-2 3.0	YB 112M-2 4.0
	6.3	32			1.72	32			
	7.5	29			1.79	33			
40-25-200	3.8	52.5	3.5	2900	3.02	18	YB 112M-2 4.0	YB 132S1-2 5.5	YB 132S2-2 7.5
	6.3	50			3.43	25			
	7.5	48			3.77	26			

安装尺寸图 Installation Dimensions Drawing



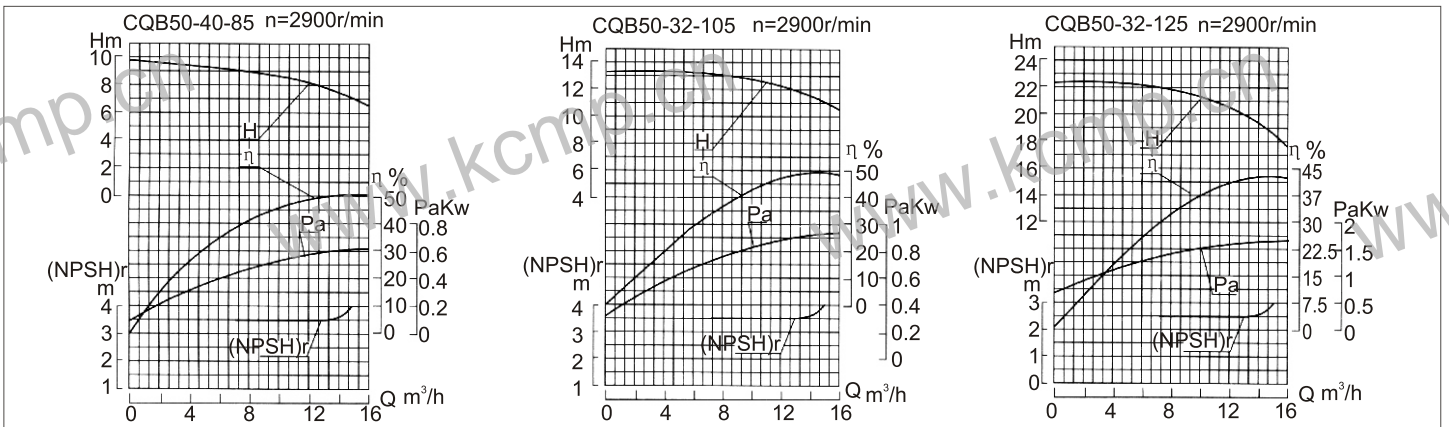
安装尺寸表 Installation Dimensions

Type 泵型号	A	AD	B	L	L1	H1	H2	a	A1	A2	A3	H	H3	H4	L2	L3	L4	L5	L6	h
40-25-125	140	155	125	508	143	160	112	65												
40-25-160	160	180	140	633	233	160	112	80	300	330	360	210	370	355	190	140	80	270	430	50
40-25-200	216	210	140	728	253	160	132	80	350	380	410	230	390	413	236	140	80	320	480	50

CQB型泵性能曲线图、性能参数表及安装尺寸图表

Performance Curve, Performance Parameters Table and Installation Dimensions Drawing, Table of CQB Pumps

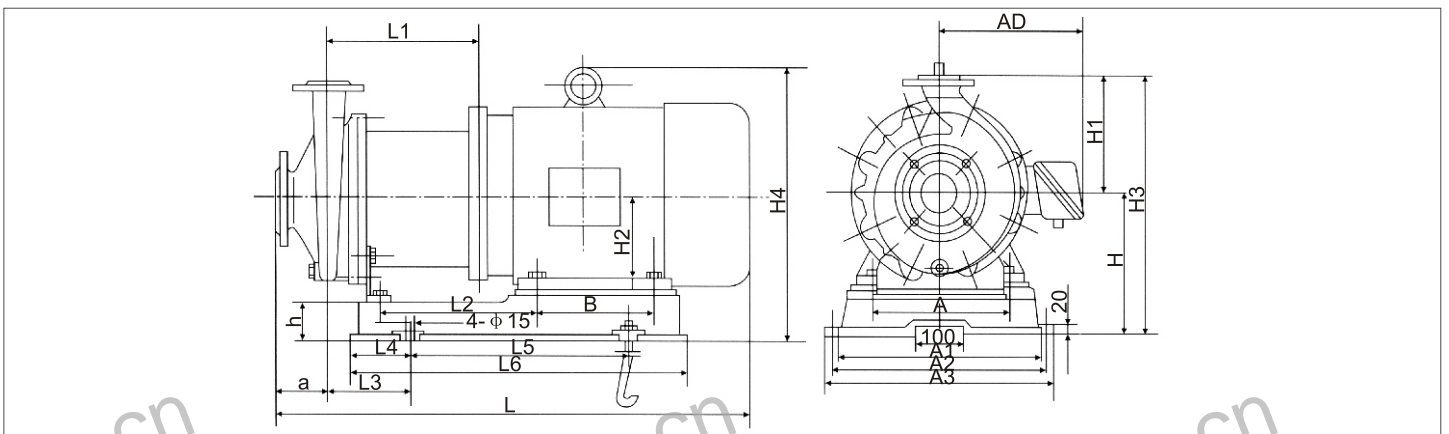
▶ **性能曲线图** Performance Curve



▶ **性能参数表** Performance Parameters

Type 泵型号	Q Capacity 流量 m³/h	Head (m) 扬程	(NPSH)r (m) 汽蚀余量	r/min speed 转速	Power 轴功率 kw	Efficiency 效率 %	配带电机功率 Power kw 介质密度 Medium density g/cm³		
							≤1	≤1.3	≤1.84
50-40-85	7.5	9	3.5	2900	0.46	40	YB 801-2 0.75	YB 802-2 1.1	YB 90S-2 1.5
	12.5	8	3.5		0.56	49			
50-32-105	7.5	13	3.5	2900	0.76	35	YB 802-2 1.1	YB 90S-2 1.5	YB 90L-2 2.2
	12.5	12.5	3.5		0.91	47			
50-32-125	7.5	22	3.5	2900	1.49	30	YB 90L-2 2.2	YB 100L-2 3.0	YB 112M-2 4.0
	12.5	20	3.5		1.62	42			
	15	18.5	4.0		1.63	43			

▶ **安装尺寸图** Installation Dimensions Drawing



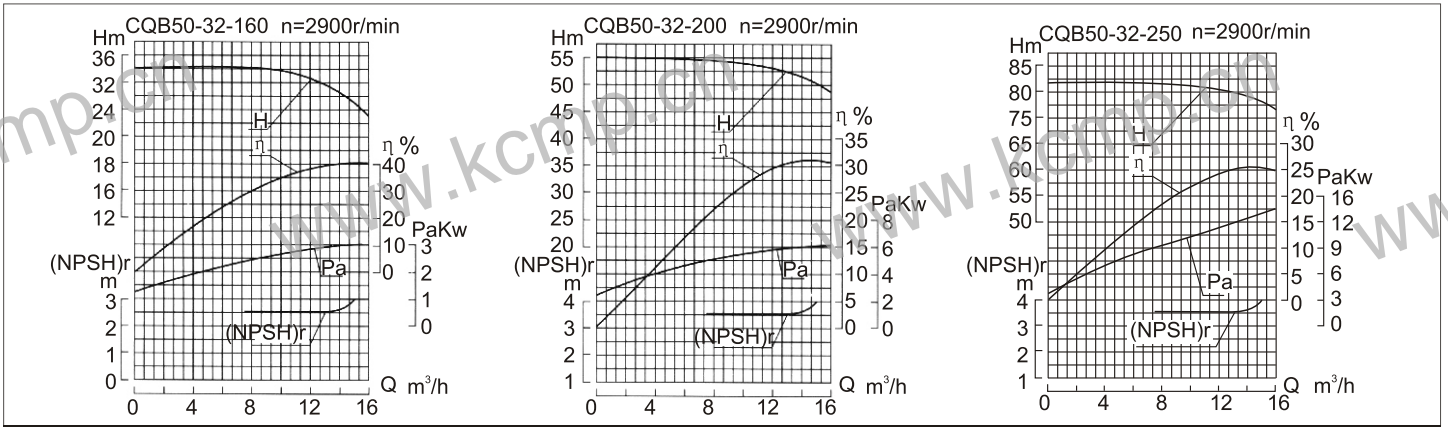
▶ **安装尺寸表** Installation Dimensions

Type 泵型号	A	AD	B	L	L1	H1	H2	a	A1	A2	A3	H	H3	H4	L2	L3	L4	L5	L6	h
50-40-85	125	150	100	458	133	120	90	80												
50-32-105	140	155	125	508	143	160	112	80												
50-32-125	160	180	140	633	233	160	112	80	300	330	360	210	370	355	190	140	80	270	430	50

CQB型泵性能曲线图、性能参数表及安装尺寸图

Performance Curve, Performance Parameters Table and Installation Dimensions Drawing, Table of CQB Pumps

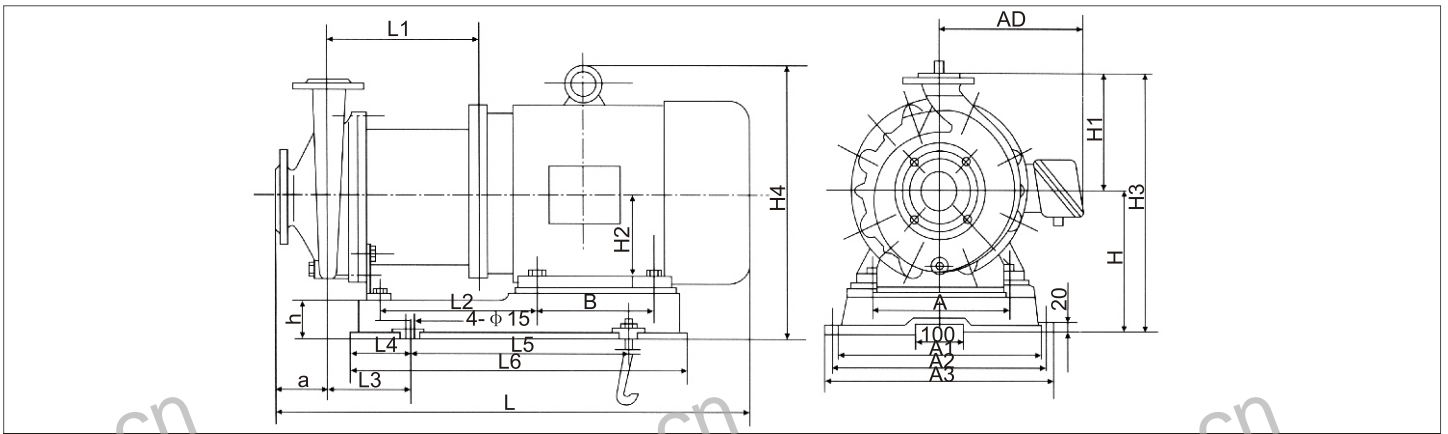
▶ **性能曲线图** Performance Curve



▶ **性能参数表** Performance Parameters

Type 泵型号	Q Capacity 流量 m³/h	Head (m) 扬程	(NPSH)r (m) 汽蚀余量	r/min 转速	Power kw 轴功率	η % 效率	配带电机功率 Power kw 介质密度 Medium density g/cm³		
							≤1	≤1.3	≤1.84
50-32-160	7.5	34	3.5	2900	2.48	28	YB 100L-2 3.0	YB 112M-2 4.0	YB 132S1-2 5.5
	12.5	32	3.5		2.79	39			
	15	29	4.0		2.96	40			
50-32-200	7.5	52.5	3.5	2900	5.10	21	YB 132S2-2 7.5	YB 132S2-2 7.5	YB 160M1-2 11
	12.5	50	3.5		5.49	31			
	15	48	4.0		6.13	32			
50-32-250	7.5	82	3.5	2900	9.57	17.5	YB 160M2-2 15	YB 160L-2 18.5	YB 180M-2 22
	12.5	80	3.5		10.89	25			
	15	78.5	4.0		13.32	26			

▶ **安装尺寸图** Installation Dimensions Drawing

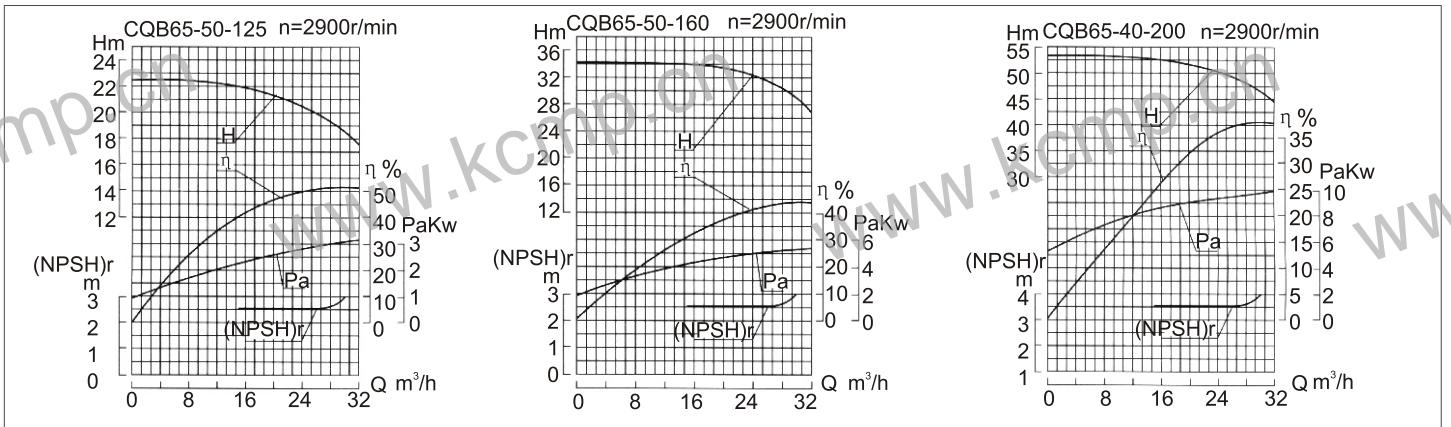


▶ **安装尺寸表** Installation Dimensions

Type 泵型号	A	AD	B	L	L1	H1	H2	a	A1	A2	A3	H	H3	H4	L2	L3	L4	L5	L6	h
50-32-160	190	190	140	653	233	160	112	80	300	330	360	210	370	363	197	140	80	270	430	50
50-32-200	216	210	140	728	253	180	132	80	350	380	410	230	410	413	236	140	80	320	480	50
50-32-250	254	255	210	898	308	225	160	100	380	410	440	260	485	485	308	161	120	440	680	80

CQB型泵性能曲线图、性能参数表及安装尺寸图表 Performance Curve, Performance Parameters Table and Installation Dimensions Drawing, Table of CQB Pumps

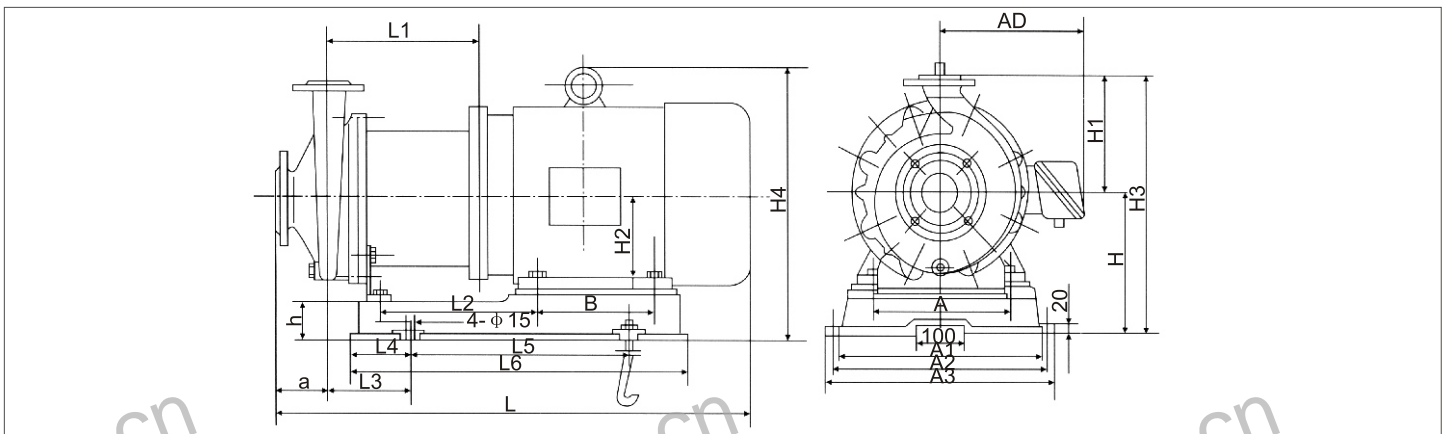
▶ **性能曲线图** Performance Curve



▶ **性能参数表** Performance Parameters

Type 泵型号	Q Capacity 流量	Head (m) 扬程	(NPSH)r (m) 汽蚀余量	r/min speed 转速	Power kw 轴功率	η % Efficiency 效率	配带电机功率 Power kw 介质密度 Medium density g/cm³		
							≤1	≤1.3	≤1.84
65-50-125	15	22	3.5	2900	2.25	40	Y YB 100L-2 3.0	Y YB 112M-2 4.0	Y YB 132S1-2 5.5
	25	20	3.5		2.67	51			
	30	18.5	4.0		2.91	52			
65-50-160	15	34	3.5	2900	4.34	32	Y YB 132S1-2 5.5	Y YB 132S2-2 7.5	Y YB 160M1-2 11
	25	32	3.5		5.07	43			
	30	29.5	4.0		5.48	44			
65-40-200	15	53	3.5	2900	8.66	25	Y YB 160M1-2 11	Y YB 160M2-2 15	Y YB 160L-2 18.5
	25	50	3.5		9.20	37			
	30	47	4.0		10.1	38			

▶ **安装尺寸图** Installation Dimensions Drawing



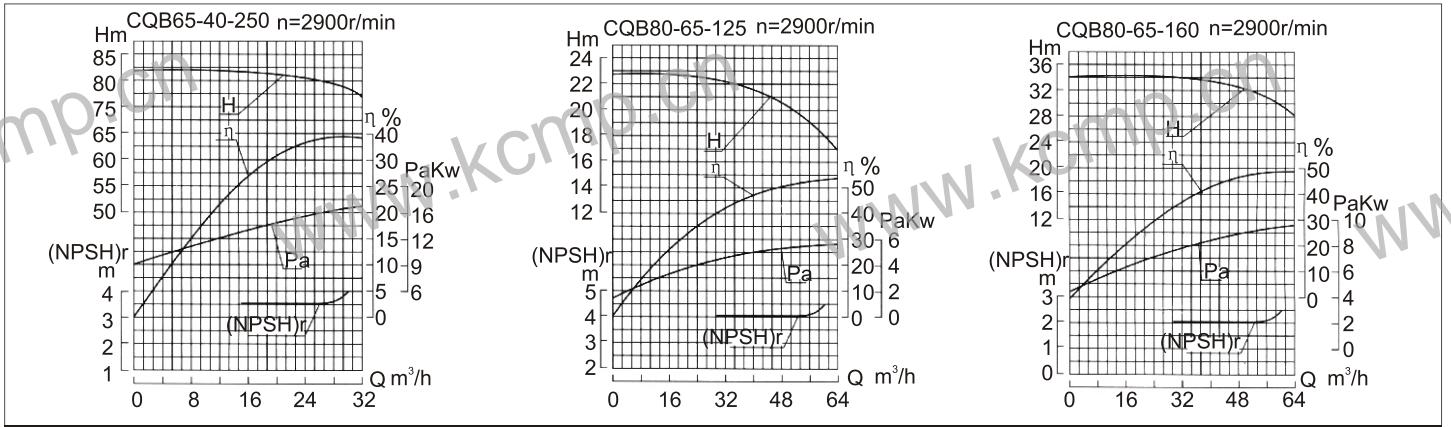
▶ **安装尺寸表** Installation Dimensions

Type 泵型号	A	AD	B	L	L1	H1	H2	a	A1	A2	A3	H	H3	H4	L2	L3	L4	L5	L6	h
65-50-125	216	210	140	728	253	160	132	80	350	380	410	230	390	413	236	140	80	320	480	50
65-50-160	216	210	140	728	253	160	132	80	350	380	410	230	390	413	236	140	80	320	480	50
65-40-200	254	255	210	898	308	180	160	100	380	410	440	260	440	485	308	161	120	440	680	80

CQB型泵性能曲线图、性能参数表及安装尺寸图表

Performance Curve, Performance Parameters Table and Installation Dimensions Drawing, Table of CQB Pumps

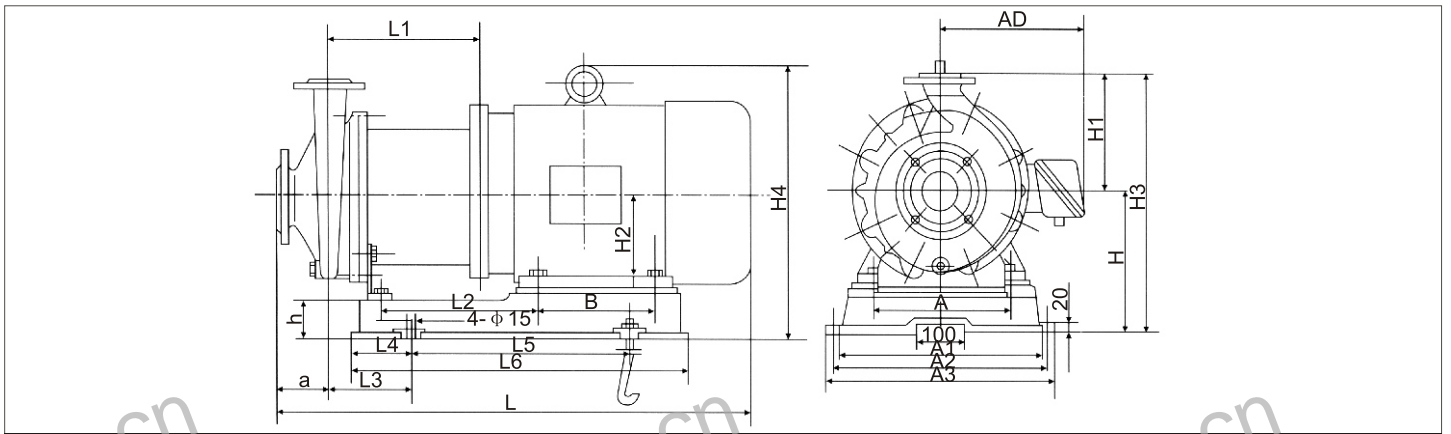
性能曲线图 Performance Curve



性能参数表 Performance Parameters

Type 泵型号	Q Capacity m³/h 流量	Head (m) 扬程	(NPSH)r (m) 汽蚀余量	r/min Speed 转速	Power kw 轴功率	η % Efficiency 效率	配带电机功率 Power kw 介质密度 Medium density g/cm³		
							≤1	≤1.3	≤1.84
65-40-250	15	82	3.5	2900	13.4	25	YB160L-2 18.5	YB180M-2 22	YB200L1-2 30
	25	80	3.5		14.72	37			
	30	78.5	4.0		16.88	38			
80-65-125	30	22.5	4.0	2900	4.48	41	YB132S1-2 5.5	YB132S2-2 7.5	YB160M1-2 11
	50	20	4.0		5.24	52			
	60	18	4.5		5.55	53			
80-65-160	30	34	4.0	2900	7.72	36	YB160M1-2 11	YB160M2-2 15	YB160L-2 18.5
	50	32	4.0		9.08	48			
	60	29	4.5		9.67	49			

安装尺寸图 Installation Dimensions Drawing



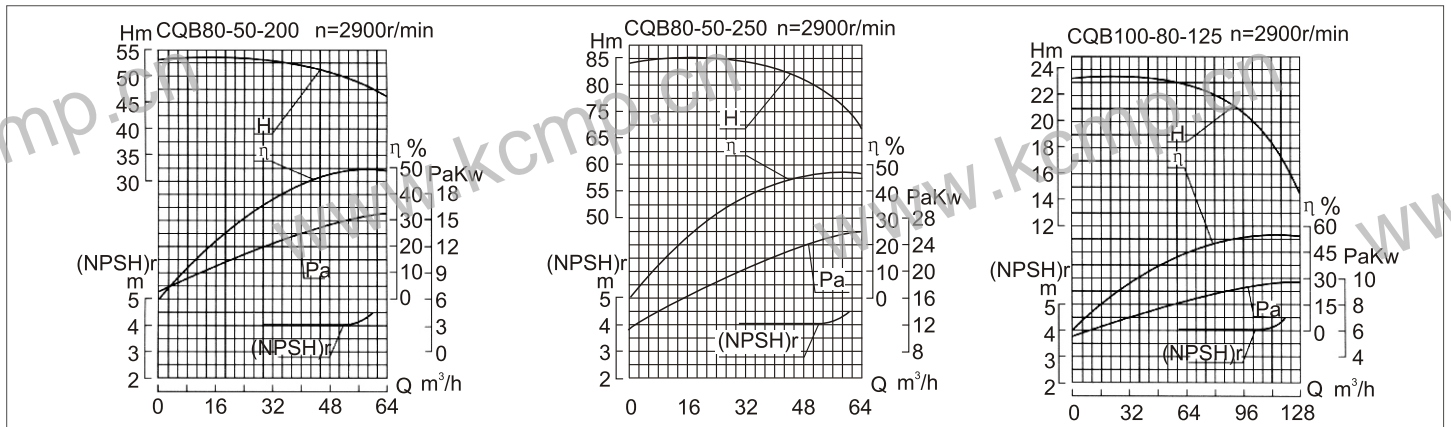
安装尺寸表 Installation Dimensions

Type 泵型号	A	AD	B	L	L1	H1	H2	a	A1	A2	A3	H	H3	H4	L2	L3	L4	L5	L6	h
65-45-250	279	285	241	968	308	225	180	100	380	410	440	280	505	530	321	161	120	440	680	80
80-65-125	216	210	140	728	253	160	132	80	350	380	410	230	390	413	236	140	80	320	480	50
80-65-160	254	255	210	898	297	180	160	100	380	410	440	260	440	485	308	161	120	440	680	80

CQB型泵性能曲线图、性能参数表及安装尺寸图表

Performance Curve, Performance Parameters Table and Installation Dimensions Drawing, Table of CQB Pumps

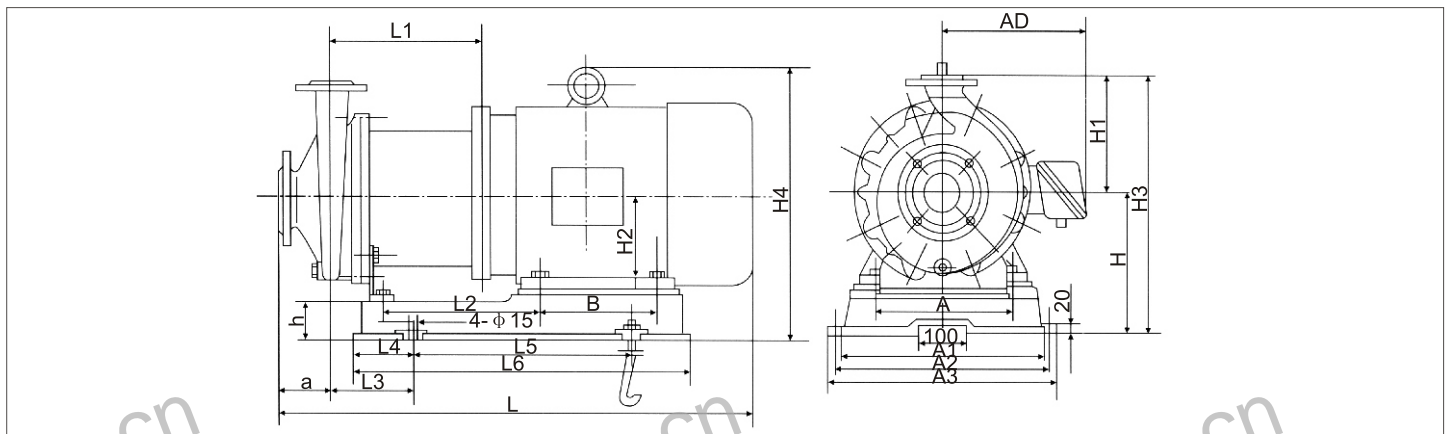
性能曲线图 Performance Curve



性能参数表 Performance Parameters

Type 泵型号	Q Capacity 流量 m³/h	Head (m) 扬程	(NPSH)r (m) 汽蚀余量	r/min speed 转速	Power 轴功率 kw	Efficiency 效率 %	配带电机功率 Power kw 介质密度 Medium density g/cm³		
							≤1	≤1.3	≤1.84
80-50-200	30	53	4.0	2900	12.03	36	YB 160L-2 18.5	YB 180M-2 22	YB 200L1-2 30
	50	50	4.0		14.80	46			
	60	47	4.5		16.34	47			
80-50-250	30	84	4.0	2900	19.06	36	YB 200L1-2 30	YB 220L2-2 37	YB 225M-2 45
	50	80	4.0		23.68	46			
	60	75	4.5		26.07	47			
100-80-125	60	23	4.0	2900	8.35	45	YB 160M1-2 11	YB 160M2-2 15	YB 160L-2 18.5
	100	20	4.0		9.73	56			
	120	16.5	4.5		9.46	57			

安装尺寸图 Installation Dimensions Drawing



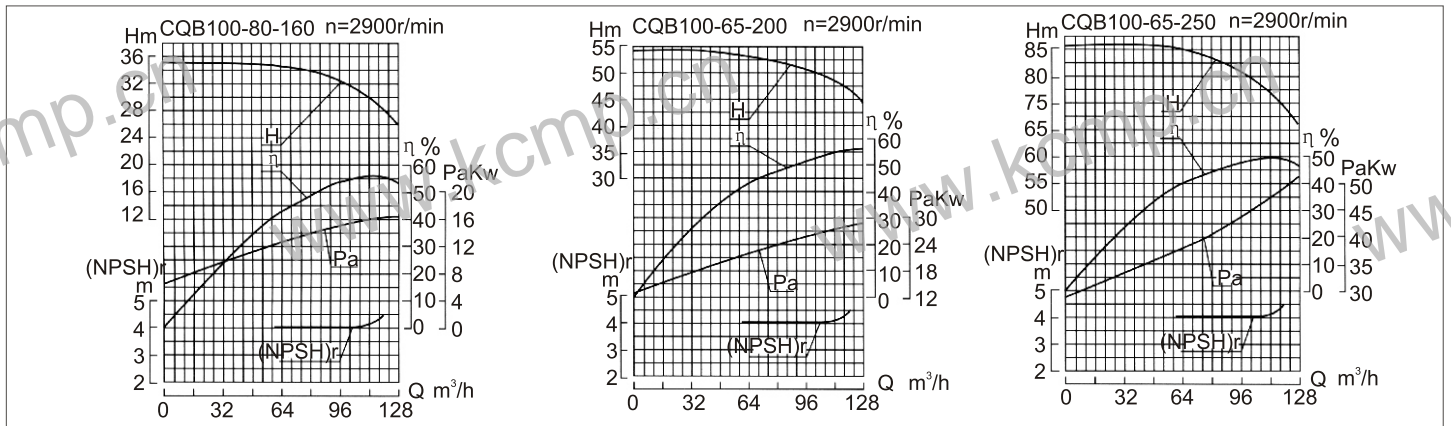
安装尺寸表 Installation Dimensions

Type 泵型号	A	AD	B	L	L1	H1	H2	a	A1	A2	A3	H	H3	H4	L2	L3	L4	L5	L6	h
80-50-200	254	255	254	943	308	200	160	100	380	410	440	260	460	485	308	161	120	440	680	80
80-50-250	318	310	305	1108	318	225	200	125	470	500	530	300	525	575	333	171	120	520	760	100
100-80-125	254	255	210	898	308	180	160	100	380	410	440	260	440	485	308	161	120	440	680	80

CQB型泵性能曲线图、性能参数表及安装尺寸图表

Performance Curve, Performance Parameters Table and Installation Dimensions Drawing, Table of CQB Pumps

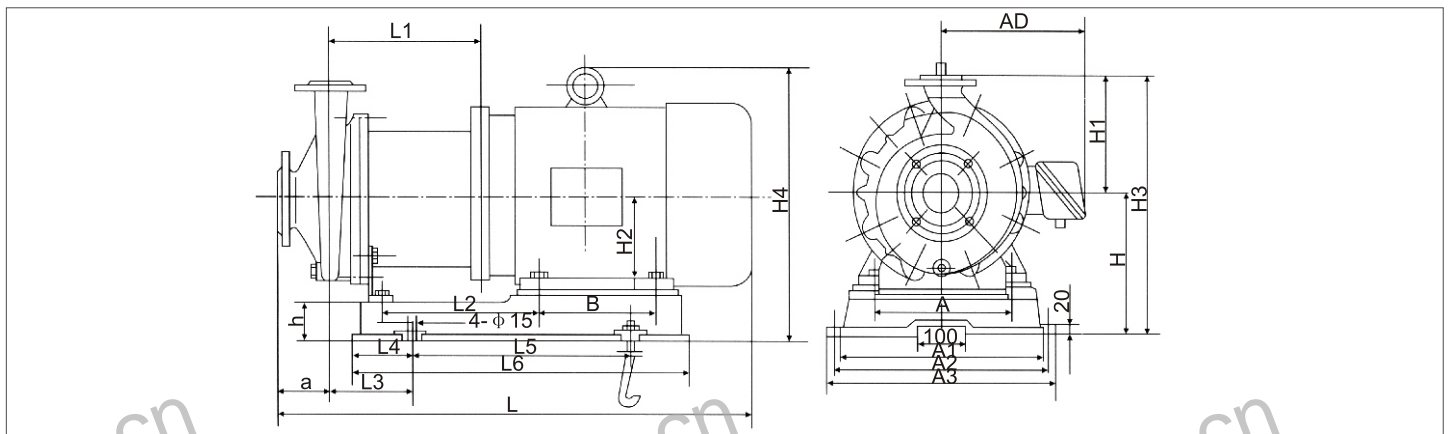
性能曲线图 Performance Curve



性能参数表 Performance Parameters

Type 泵型号	Q m³/h Capacity 流量	Head (m) 扬程	(NPSH)r (m) 汽蚀余量	r/min speed 转速	Power kw 轴功率	Efficiency % 效率	配带电机功率 Power kw 介质密度 Medium density g/cm³		
							≤1	≤1.3	≤1.84
100-80-160	60	35	4.0	2900	12.43	46	Y 160L-2	Y 180M-2	Y 200L1-2
	100	32	4.0		15.85	55	YB 18.5	YB 22	YB 30
	120	28	4.5		16.34	56			
100-65-200	60	54	4.0	2900	21.01	42	Y 200L1-2	Y 220L2-2	Y 225M-2
	100	50	4.0		25.69	53	YB 30	YB 37	YB 45
	120	47	4.5		28.44	56			
100-65-250	60	86	4.0	2900	37.98	37	Y 225M-2	Y 250M-2	Y 280S-2
	100	80	4.0		45.39	48	YB 45	YB 55	YB 75
	120	74.5	4.5		49.69	49			

安装尺寸图 Installation Dimensions Drawing

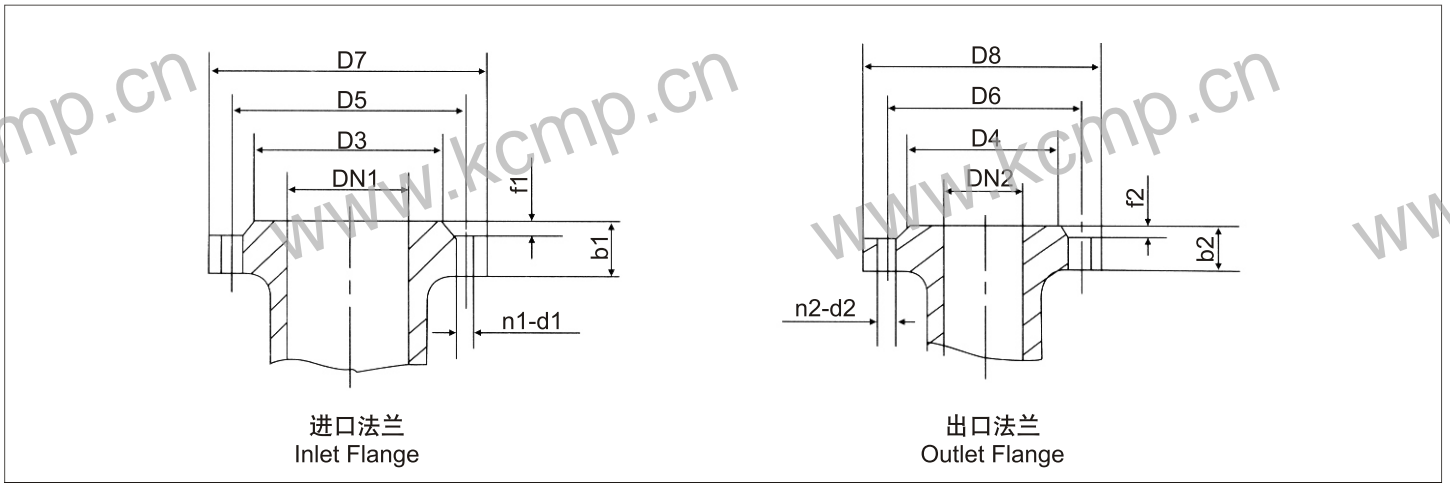


安装尺寸表 Installation Dimensions

Type 泵型号	A	AD	B	L	L1	H1	H2	a	A1	A2	A3	H	H3	H4	L2	L3	L4	L5	L6	h
100-80-160	254	255	254	943	308	200	160	100	380	410	440	260	460	485	308	161	120	440	680	80
100-65-200	318	310	305	1083	318	225	180	100	470	500	530	300	525	575	333	171	120	520	760	100
100-65-250	356	310	311	1108	318	250	200	125	470	500	530	300	550	575	330	171	120	520	760	100

CQB型泵法兰安装尺寸图表 Flange Installation Dimensions Drawing、Table of CQB Pumps

▶ 法兰安装尺寸图 Flange Installation Dimensions Drawing



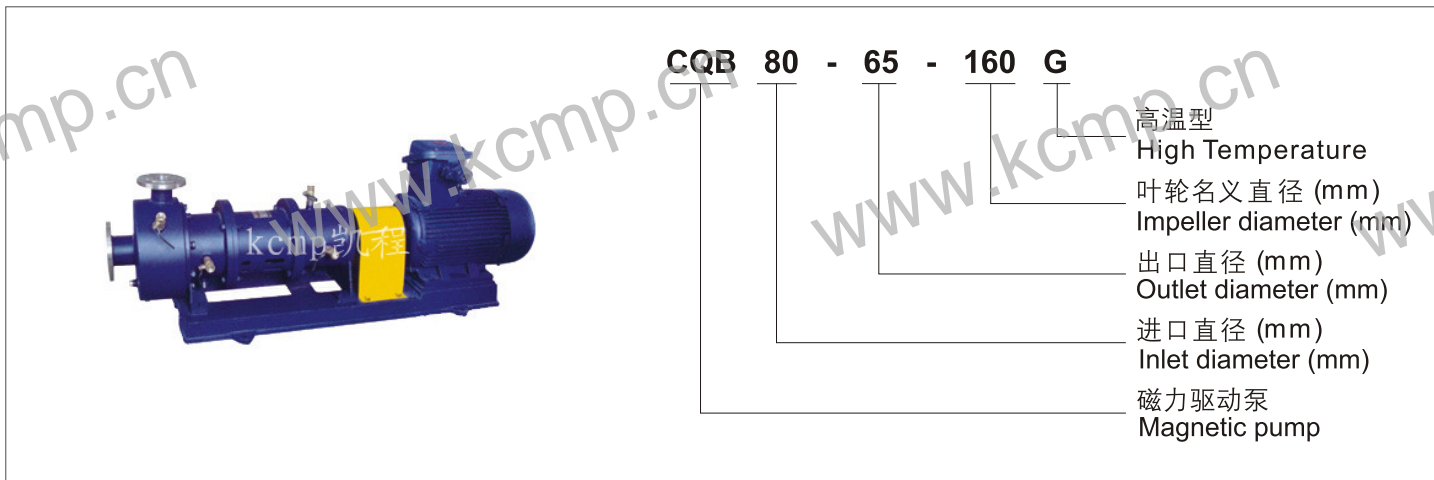
▶ 法兰安装尺寸表 Flange Installation Dimensions Table

Type 泵型号	进口法兰 Inlet Flange							出口法兰 Outlet Flange						
	DN1	D3	D5	D7	b1	f1	n1-d1	DN2	D4	D6	D8	b2	f2	n2-d2
32-20-125	32	69	90	120	16	3	4-φ14	20	48	65	96	14	2	4-φ11
32-20-160								25	58	75	100	14	3	4-φ11
40-25-105	40	78	100	130	16	3	4-φ14	25	65	85	115	16	3	4-φ14
40-25-125														
40-25-160														
40-25-200	84	110	150	18	3	4-φ18	25	65	85	115	16	3	4-φ14	
50-40-85	50	88	110	140	16	3	4-φ14	40	78	100	130	16	3	4-φ14
50-32-105								32	69	90	120	16	3	4-φ14
50-32-125								32	76	100	140	18	3	4-φ18
50-32-160														
50-32-200														
50-32-250	99	125	165	20	3	4-φ18	32	76	100	140	18	3	4-φ18	
65-50-125	65	108	130	160	16	3	4-φ14	50	88	110	140	16	3	4-φ14
65-50-160								50	99	125	165	20	3	4-φ18
65-40-200								40	84	110	150	18	3	
65-40-250														
80-65-125	80	124	150	190	18	3	4-φ18	65	108	130	160	16	3	4-φ14
80-65-160								65	118	145	185	20	3	4-φ18
80-50-200								50	99	125	165	20	3	
80-50-250														
100-80-125														80
100-80-160	80	132	160	200	20	3	8-φ18							
100-65-200	65	118	145	185	20	3	4-φ18							
100-65-250														

CQB-G型高温磁力泵简介 Brief Introduction of CQB-G High Temperature Magnetic Pumps

▶ CQB-G型高温磁力泵 CQB-G High Temperature Magnetic Pumps

▶ 型号意义 Designation



▶ 产品特点 Product Features

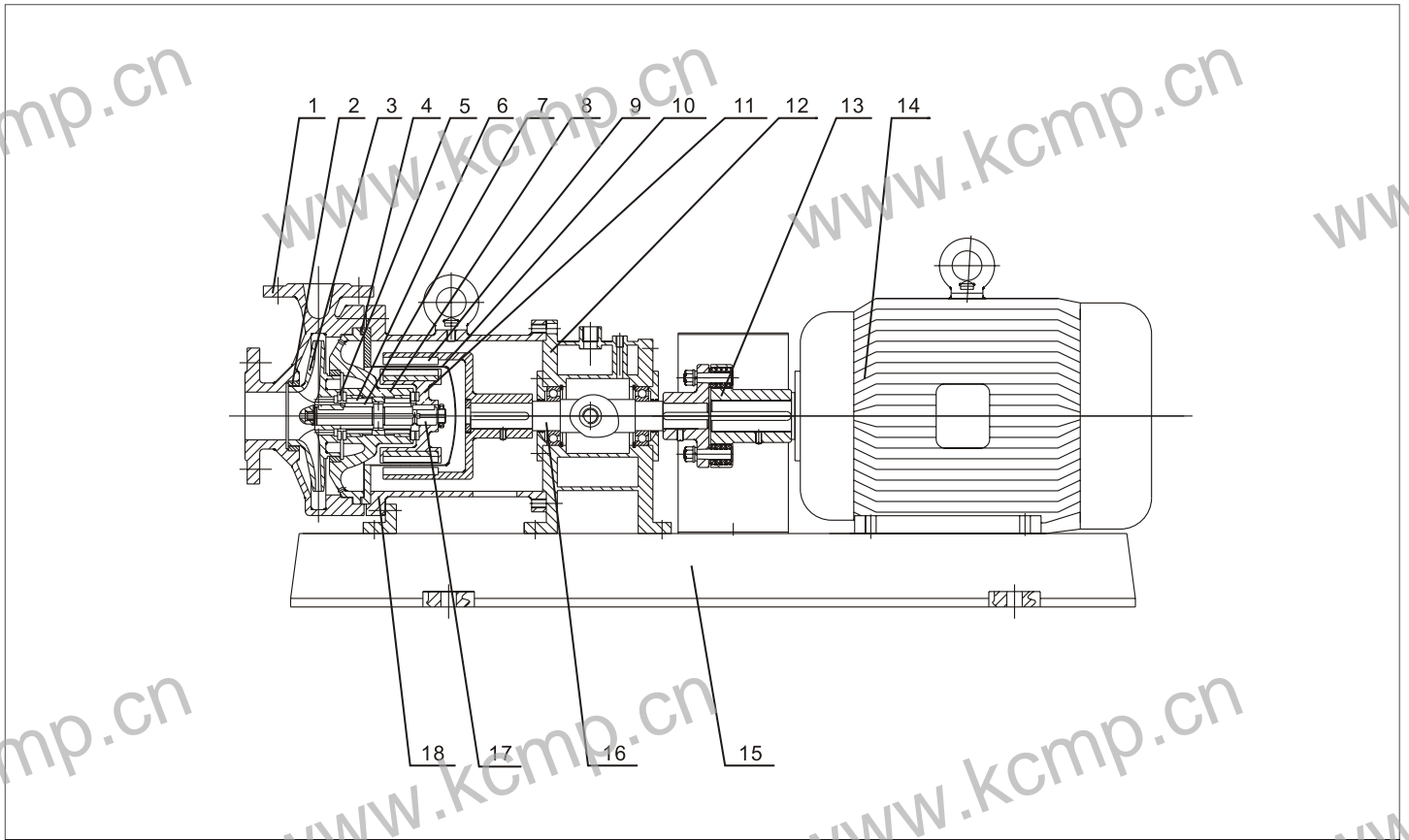
- CQB-G采用多重循环冷却结构，保证了原动力和磁传动的可靠性和稳定性，同时采用柱销联轴器减少了泵的噪音和震动，便拆式和柱销联轴器同时使用，使泵的结构增长，更有利于泵的散热。同时，也十分方便用户的维修或更换零件，在泵的外转子部分还设计了散热风叶，确保磁钢的稳定性。本系列泵适用于输送高温介质，使用温度 $\leq 300^{\circ}\text{C}$ 。
- CQB-G uses multiple circulating cooling structure to ensure the dependability and stability of prime mover and magnetic drive. Meanwhile, pin coupling is used to reduce the noise and vibration of pump. The detachable type and pin coupling makes the structure of pump longer, which is good for heat dissipation. Moreover, to make repair and replacement of spare parts much easier, a heat dissipation fan blade is designed on the outer rotor of pump to ensure the stability of magnet steel. This series of pumps are applicable for high temperature mediums, with service temperature $\leq 300^{\circ}\text{C}$.

▶ 主要性能参数 Main performance parameters

- | | |
|--|--|
| • 过流部件材质： 不锈钢(奥氏体) | • Material of Wet Parts: Stainless Steel (Austenite) |
| • 联接方式： 法兰 | • Connecting Types: Flange |
| • 流量 Q: 3.2~100 m ³ /h | • Flow Q: 3.2~100m ³ /h |
| • 扬程 H: 20~80 m | • Head H: 20~80m |
| • 功率 N: 0.75~75 kw | • Power N: 0.75~75kW |
| • 介质的运动粘度: $\leq 30 \times 10^{-6}\text{m}^3/\text{s}$ | • Kinematic Viscosity of medium: $\leq 30 \times 10^{-6}\text{m}^3/\text{s}$ |
| • 介质温度(t): 120~300 $^{\circ}\text{C}$ | • Medium Temperature (t): 120~300 $^{\circ}\text{C}$ |

CQB-G型泵结构图及材料表 Structural Drawing and Material Table of CQB-G Pumps

结构图 Structural Drawing



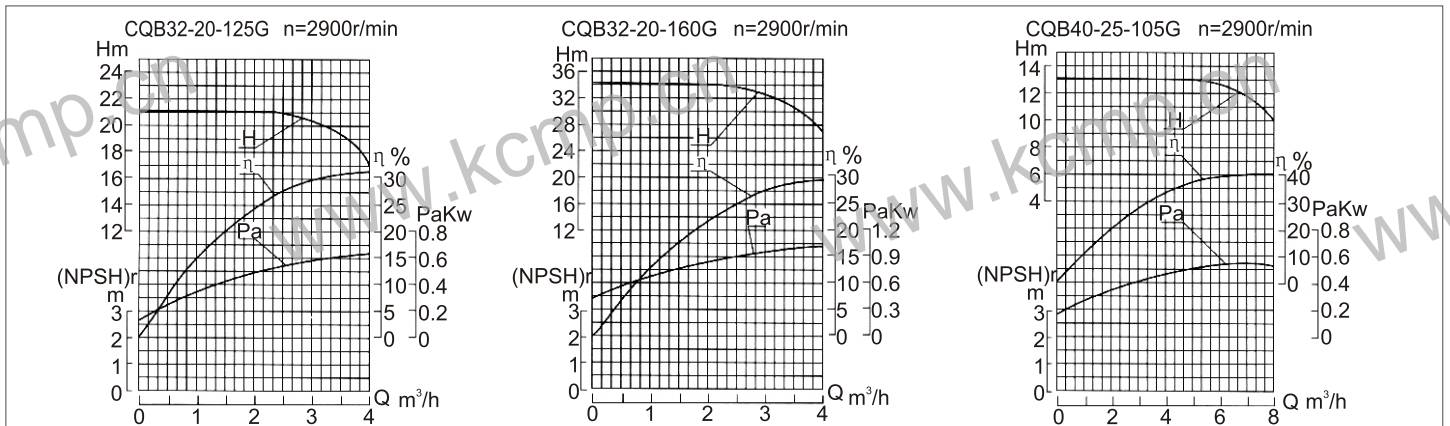
材料表 Material Table

序号 No.	零件名称 Name of part	材质或型号 Material or model	序号 No.	零件名称 Name of part	材质或型号 Material or model
1	泵体 Pump body	ZG1Cr18Ni9	10	隔离套 Spacer Sleeve	1Cr18Ni9Ti
2	口环 Ring	1Cr18Ni9Ti	11	内磁钢总成 Assembly of Inner Magnet Steel	磁体组件 Components of magnet
3	叶轮 Impeller	ZG1Cr18Ni9	12	冷却箱 Cooling Box	组合件 Subassemblies
4	密封圈 Sealing ring	聚四氟乙烯 PTFE	13	联轴器 Coupling	HT200
5	止推环 Reaction ring	YG8	14	电机 Motor	Y Y2 or YB系列 Y(Y2) or YB Series
6	轴承 Bearing	M106K	15	底盘 Chassis	HT200
7	轴套 Axle Sleeve	YG8	16	主轴 Main Shaft	45#钢 45# Steel
8	轴承体 Bearing Body	ZG1Cr18Ni9	17	泵轴 Pump Shaft	1Cr18Ni9Ti
9	外磁钢总成 Assembly of Outer Magnet Steel	磁体组件 Components of magnet	18	联接架 Linkup Stand	HT200

CQB-G型泵性能曲线图、性能参数表及安装尺寸图表

Performance Curve, Performance Parameters Table and Installation Dimensions Drawing, Table of CQB-G Pumps

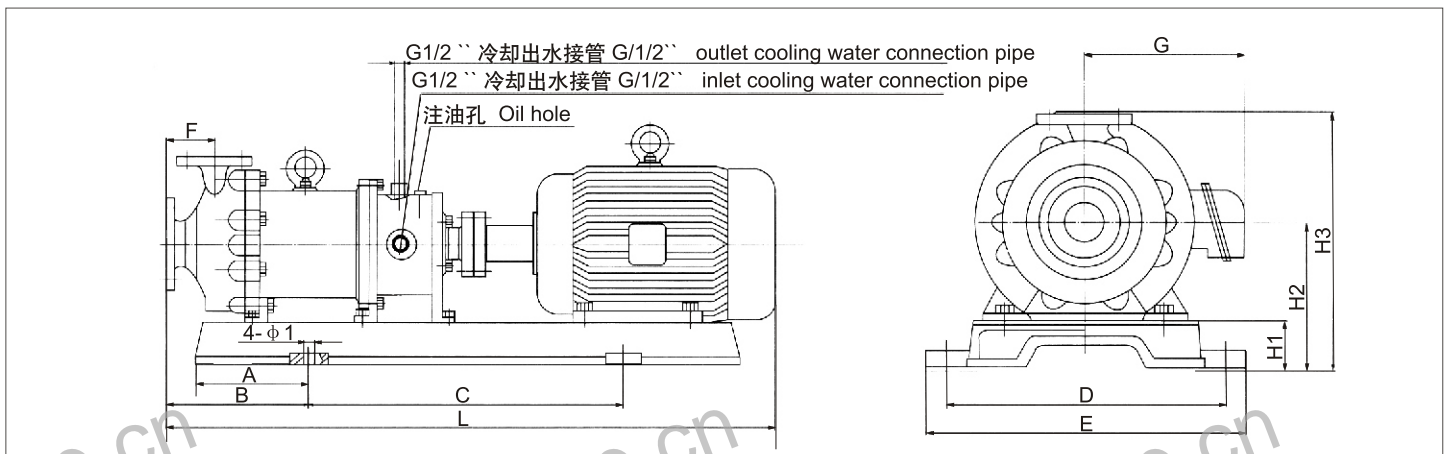
性能曲线图 Performance Curve



性能参数表 Performance Parameters

Type 泵型号	Q Capacity 流量 m³/h	Head (m) 扬程	(NPSH)r 汽蚀余量 (m)	r/min speed 转速	Power 轴功率 kw	Efficiency 效率 %	配带电机功率 Power kw 介质密度 Medium density g/cm³		
							≤1	≤1.3	≤1.84
32-20-125	1.9	20	5.0	2900	0.49	23	YB 801-2 0.75	YB 802-2 1.1	YB 90S-2 1.5
	3.2	20			0.58	30			
	3.8	18.5			0.62	31			
32-20-160	1.9	34	3.5	2900	0.84	21	YB 802-2 1.1	YB 90S-2 1.5	YB 90L-2 2.2
	3.2	32			0.99	28			
	3.8	29			1.03	29			
40-25-105	3.8	13	6.0	2900	0.42	32	YB 801-2 0.75	YB 802-2 1.1	YB 90S-2 1.5
	6.3	12.5			0.55	39			
	7.5	11			0.56	40			

安装尺寸图 Installation Dimensions Drawing



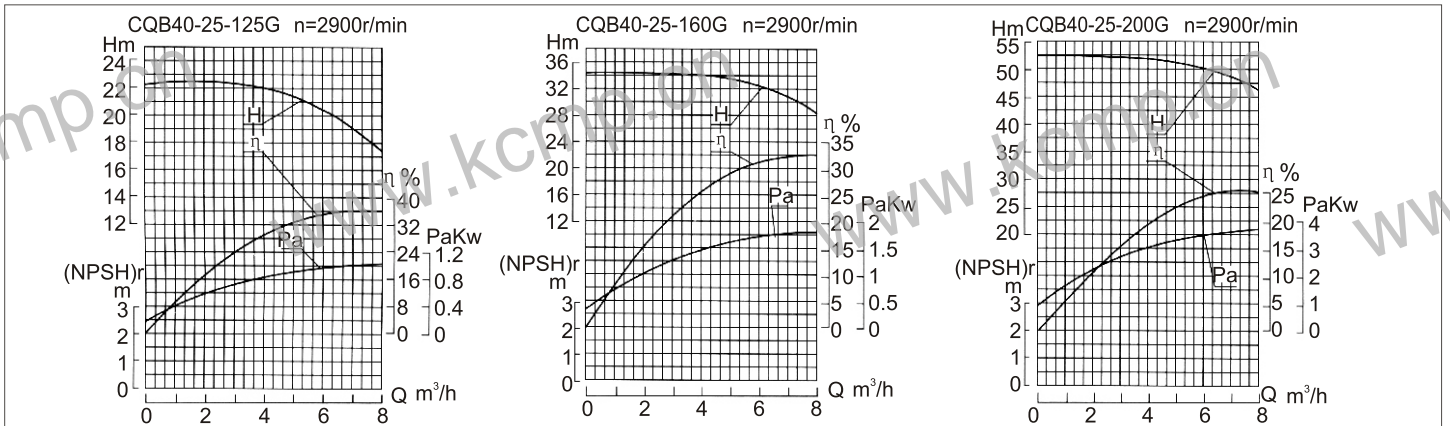
安装尺寸表 Installation Dimensions

Type 泵型号	A	B	C	D	E	F	G	L	H2	H1	H3	φ1
32-20-125	130	150	440	216	240	65	150	751	50	130	250	11.5
32-20-160	130	150	440	216	240	65	150	751	50	130	290	11.5
40-25-105	130	150	440	216	240	65	150	751	50	130	250	11.5

CQB-G型泵性能曲线图、性能参数表及安装尺寸图表

Performance Curve、Performance Parameters Table and Installation Dimensions Drawing、Table of CQB-G Pumps

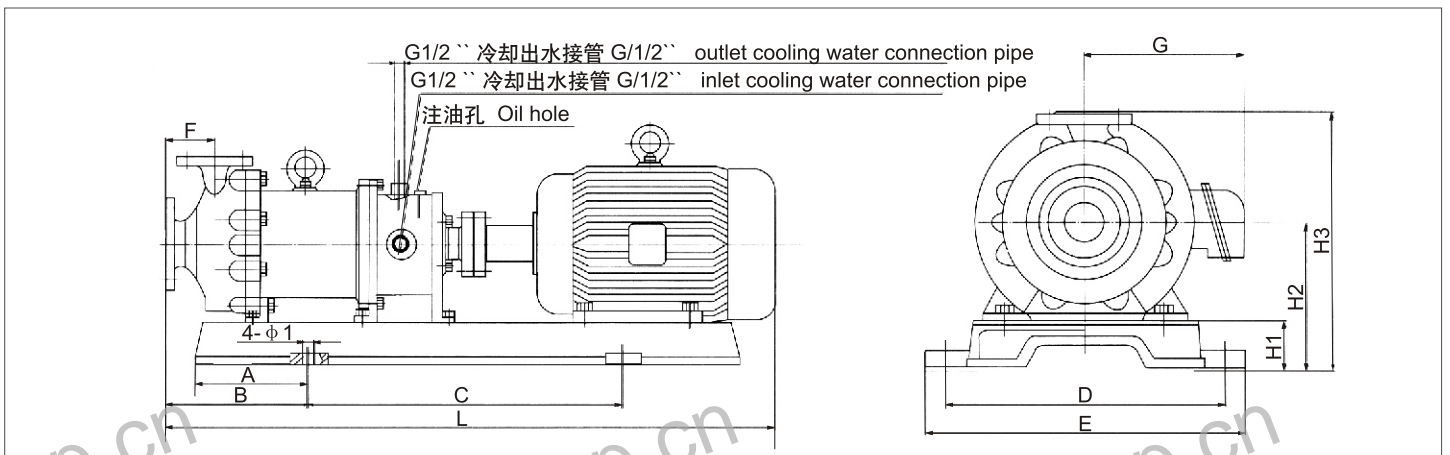
性能曲线图 Performance Curve



性能参数表 Performance Parameters

Type 泵型号	Q Capacity 流量	Head (m) 扬程	(NPSH)r (m) 汽蚀余量	r/min speed 转速	Power kw 轴功率	η % Efficiency 效率	配带电机功率 Power kw 介质密度 Medium density g/cm³		
							≤1	≤1.3	≤1.84
40-25-125	3.8	22	5.0	2900	0.81	28	YB 802-2 1.1	YB 90L-2 2.2	YB 100L-2 3.0
	6.3	20			0.98	35			
	7.5	18.5			1.05	36			
40-25-160	3.8	34	3.5	2900	1.41	25	YB 90L-2 2.2	YB 100L-2 3.0	YB 112M-2 4.0
	6.3	32			1.72	32			
	7.5	29			1.79	33			
40-25-200	3.8	52.5	3.5	2900	3.02	18	YB 112M-2 4.0	YB 132S1-2 5.5	YB 132S2-2 7.5
	6.3	50			3.43	25			
	7.5	48			3.77	26			

安装尺寸图 Installation Dimensions Drawing



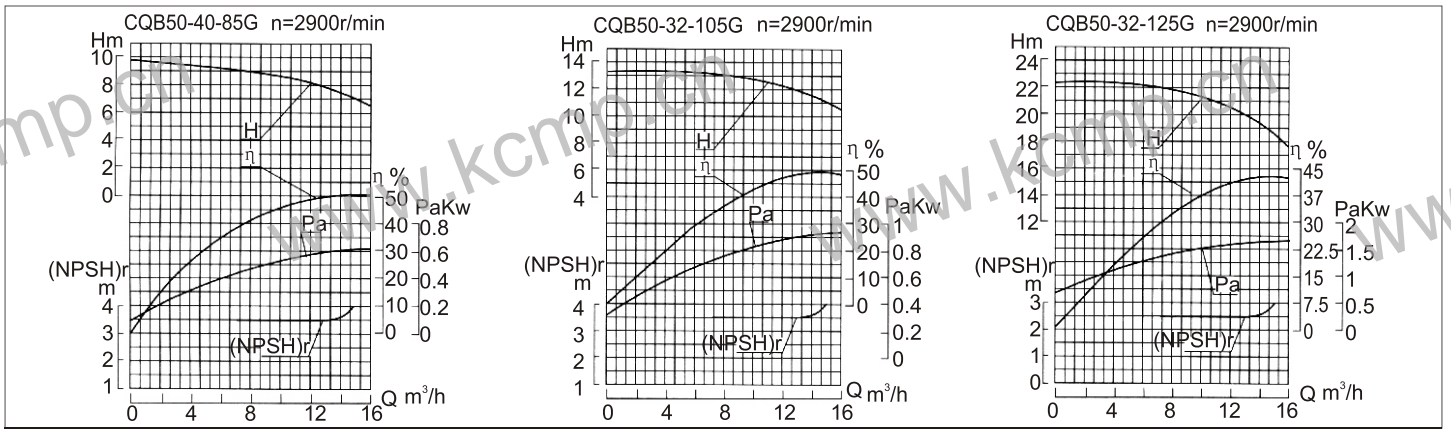
安装尺寸表 Installation Dimensions

Type 泵型号	A	B	C	D	E	F	G	L	H2	H1	H3	φ1
40-25-125	130	150	440	216	240	65	150	761	50	130	290	11.5
40-25-160	180	210	500	316	350	80	155	916	80	170	330	13.5
40-25-200	180	210	500	316	350	80	190	1001	80	212	372	13.5

CQB-G型泵性能曲线图、性能参数表及安装尺寸图表

Performance Curve, Performance Parameters Table and Installation Dimensions Drawing, Table of CQB-G Pumps

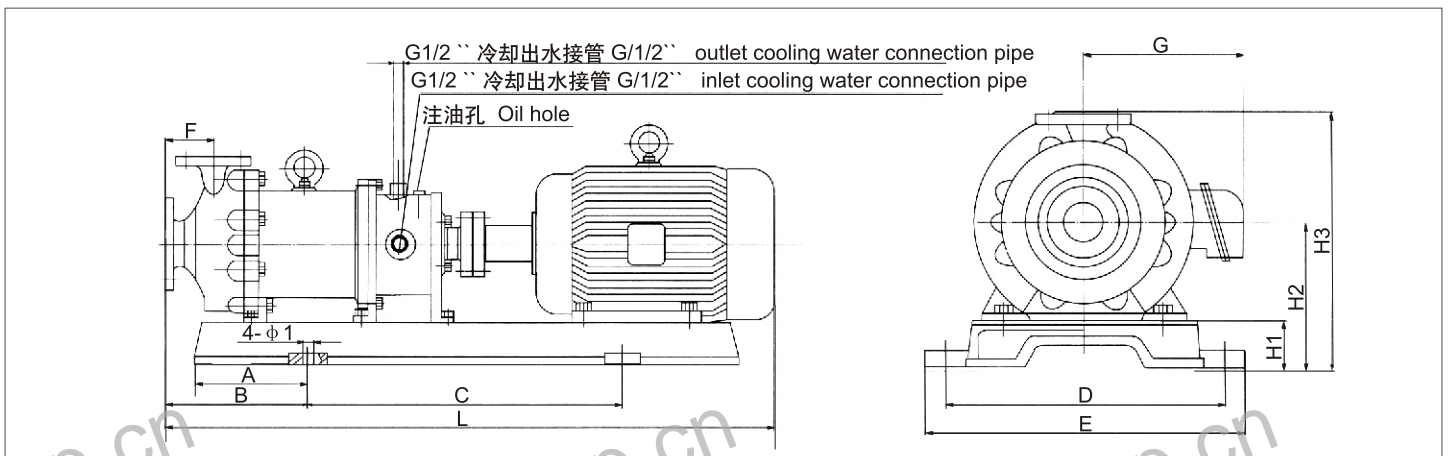
▶ **性能曲线图** Performance Curve



▶ **性能参数表** Performance Parameters

Type 泵型号	Q (m³/h) Capacity 流量	Head (m) 扬程	(NPSH)r (m) 汽蚀余量	r/min speed 转速	Power (kw) 轴功率	Efficiency (%) 效率	配带电机功率 Power kw 介质密度 Medium density g/cm³		
							≤1	≤1.3	≤1.84
50-40-85	7.5	9	3.5	2900	0.46	40	YB 801-2 0.75	YB 802-2 1.1	YB 90S-2 1.5
	12.5	8	3.5		0.56	49			
	15	7.5	4.0		0.61	50			
50-32-105	7.5	13	3.5	2900	0.76	35	YB 802-2 1.1	YB 90S-2 1.5	YB 90L-2 2.2
	12.5	12.5	3.5		0.91	47			
	15	11	4.0		0.94	48			
50-32-125	7.5	22	3.5	2900	1.49	30	YB 90L-2 2.2	YB 100L-2 3.0	YB 112M-2 4.0
	12.5	20	3.5		1.62	42			
	15	18.5	4.0		1.63	43			

▶ **安装尺寸图** Installation Dimensions Drawing



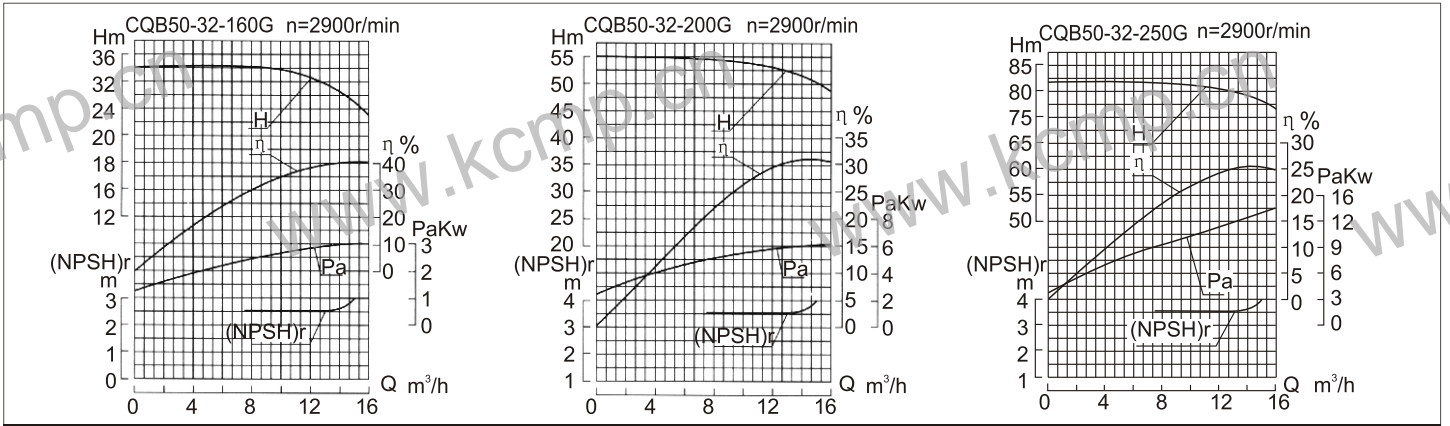
▶ **安装尺寸表** Installation Dimensions

Type 泵型号	A	B	C	D	E	F	G	L	H2	H1	H3	φ1
50-40-85	130	150	440	216	240	80	150	766	50	130	250	11.5
50-32-105	130	150	440	216	240	80	150	776	50	130	290	11.5
50-32-125	180	210	500	316	350	80	155	916	80	170	330	13.5

CQB-G型泵性能曲线图、性能参数表及安装尺寸图表

Performance Curve, Performance Parameters Table and Installation Dimensions Drawing, Table of CQB-G Pumps

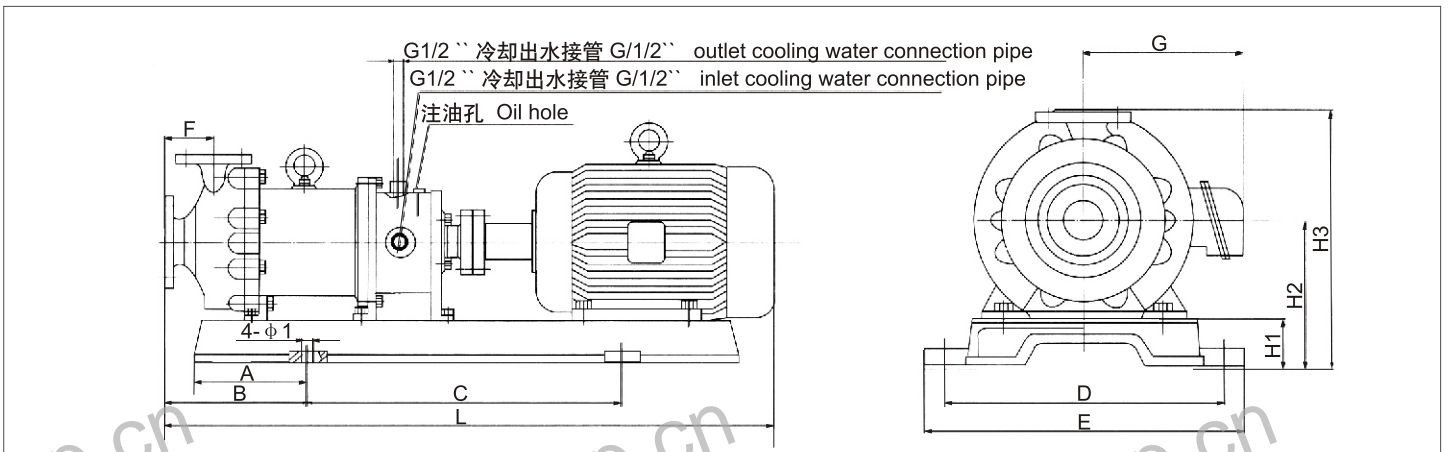
▶ **性能曲线图** Performance Curve



▶ **性能参数表** Performance Parameters

Type 泵型号	Q Capacity 流量 (m³/h)	Head (m) 扬程	(NPSH)r (m) 汽蚀余量	r/min speed 转速	Power 轴功率 (kw)	Efficiency 效率 (%)	配带电机功率 Power (kw) 介质密度 Medium density (g/cm³)		
							≤1	≤1.3	≤1.84
50-32-160	7.5	34	3.5	2900	2.48	28	YB 100L-2 3.0	YB 112M-2 4.0	YB 132S1-2 5.5
	12.5	32	3.5		2.79	39			
50-32-200	7.5	52.5	3.5	2900	5.10	21	YB 132S2-2 7.5	YB 132S2-2 7.5	YB 160M1-2 11
	12.5	50	3.5		5.49	31			
50-32-250	7.5	82	3.5	2900	9.57	17.5	YB 160M2-2 15	YB 160L-2 18.5	YB 180M-2 22
	12.5	80	3.5		10.89	25			
	15	78.5	4.0		13.32	26			

▶ **安装尺寸图** Installation Dimensions Drawing



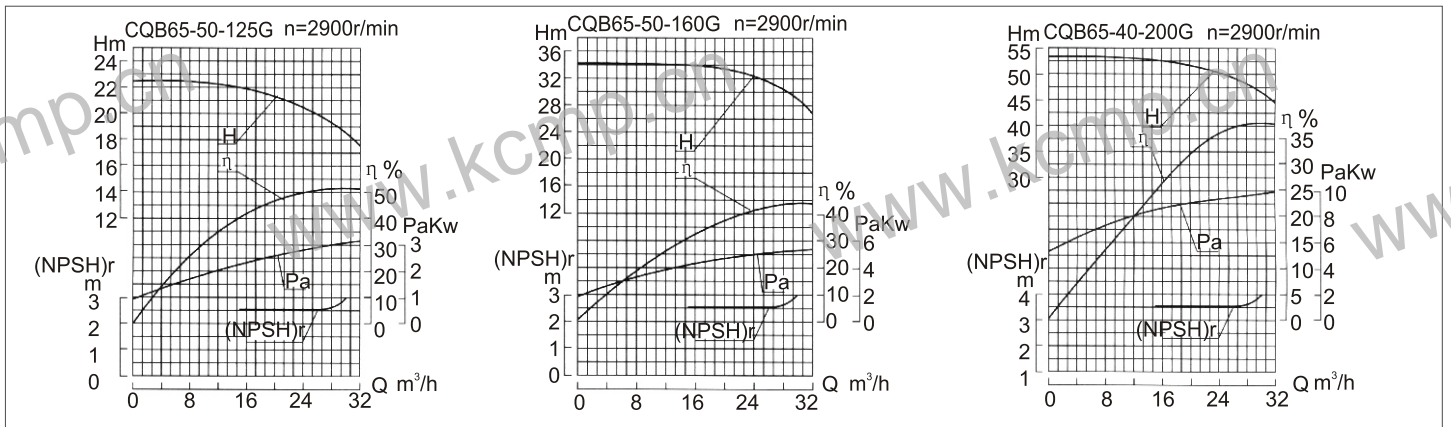
▶ **安装尺寸表** Installation Dimensions

Type 泵型号	A	B	C	D	E	F	G	L	H2	H1	H3	φ1
50-32-160	180	210	540	316	350	80	180	961	80	212	372	13.5
50-32-200	215	210	690	316	350	80	210	1076	80	212	392	13.5
50-32-250	215	260	770	400	440	100	255	1276	100	232	457	18.5

CQB-G型泵性能曲线图、性能参数表及安装尺寸图表

Performance Curve, Performance Parameters Table and Installation Dimensions Drawing, Table of CQB-G Pumps

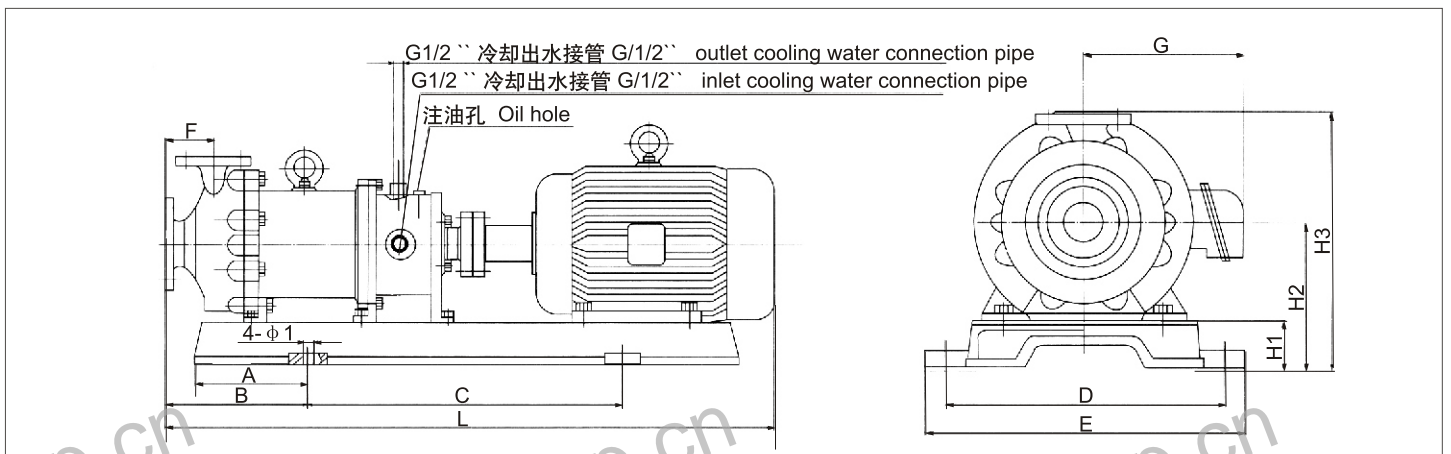
▶ **性能曲线图** Performance Curve



▶ **性能参数表** Performance Parameters

Type 泵型号	Q Capacity 流量 (m³/h)	Head (m) 扬程	(NPSH)r (m) 汽蚀余量	r/min speed 转速	Power 轴功率 (kw)	Efficiency 效率 (%)	配带电机功率 Power kw 介质密度 Medium density g/cm³		
							≤1	≤1.3	≤1.84
65-50-125	15	22	3.5	2900	2.25	40	YB 100L-2 3.0	YB 112M-2 4.0	YB 132S1-2 5.5
	25	20	3.5		2.67	51			
	30	18.5	4.0		2.91	52			
65-50-160	15	34	3.5	2900	4.34	32	YB 132S1-2 5.5	YB 132S2-2 7.5	YB 160M1-2 11
	25	32	3.5		5.07	43			
	30	29.5	4.0		5.48	44			
65-40-200	15	53	3.5	2900	8.66	25	YB 160M1-2 11	YB 160M2-2 15	YB 160L-2 18.5
	25	50	3.5		9.20	37			
	30	47	4.0		10.1	38			

▶ **安装尺寸图** Installation Dimensions Drawing



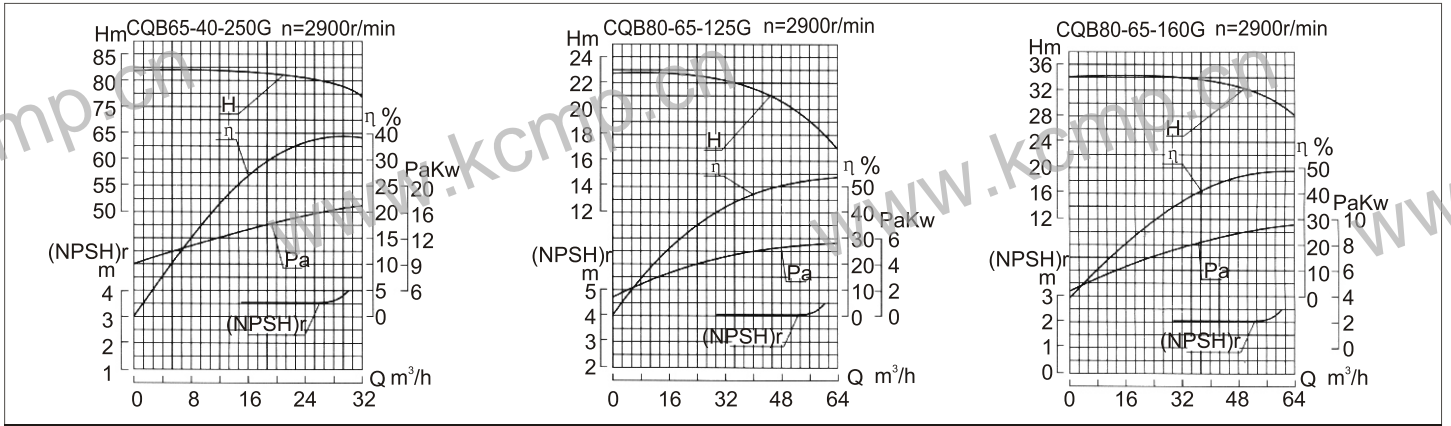
▶ **安装尺寸表** Installation Dimensions

Type 泵型号	A	B	C	D	E	F	G	L	H2	H1	H3	φ1
65-50-125	180	210	590	290	350	80	180	981	80	170	330	13.5
65-50-160	180	210	600	316	350	80	210	1076	80	212	372	13.5
65-40-200	215	260	770	400	440	100	255	1368	100	260	440	18.5

CQB-G型泵性能曲线图、性能参数表及安装尺寸图表

Performance Curve, Performance Parameters Table and Installation Dimensions Drawing, Table of CQB-G Pumps

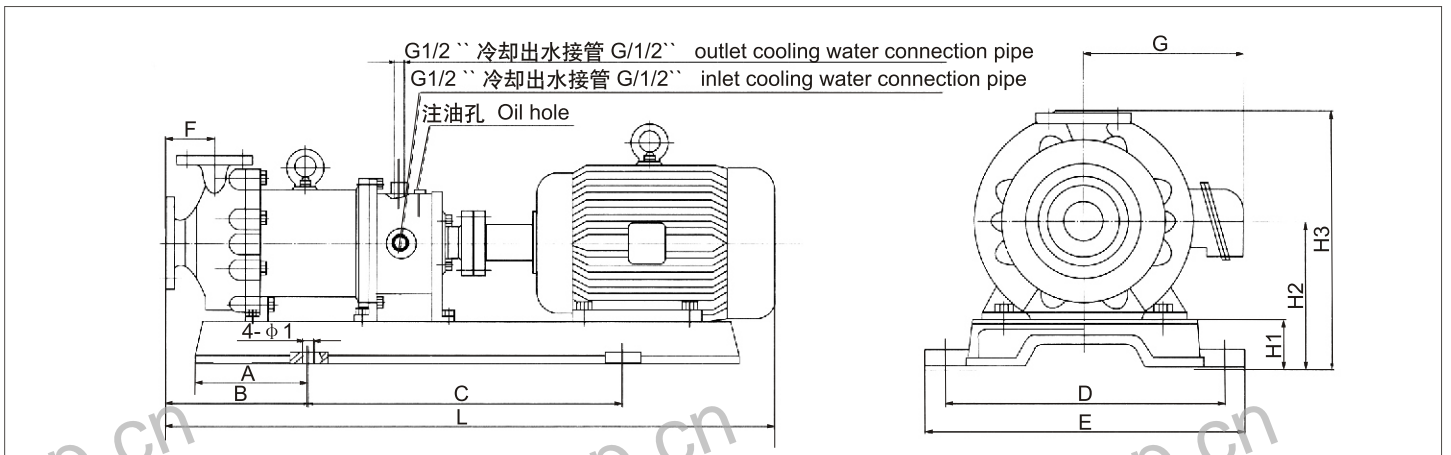
性能曲线图 Performance Curve



性能参数表 Performance Parameters

Type 泵型号	Capacity 流量 (m³/h)	Head 扬程 (m)	(NPSH)r 汽蚀余量 (m)	speed 转速 (r/min)	Power 轴功率 (kw)	Efficiency 效率 (%)	配带电机功率 Power kw 介质密度 Medium density g/cm³		
							≤1	≤1.3	≤1.84
65-40-250	15	82	3.5	2900	13.4	25	YB160L-2	YB180M-2	YB200L1-2
	25	80	3.5		14.72	37	18.5	22	30
	30	78.5	4.0		16.88	38			
80-65-125	30	22.5	4.0	2900	4.48	41	YB132S1-2	YB132S2-2	YB160M1-2
	50	20	4.0		5.24	52	5.5	7.5	11
	60	18	4.5		5.55	53			
80-65-160	30	34	4.0	2900	7.72	36	YB160M1-2	YB160M2-2	YB160L-2
	50	32	4.0		9.08	48	11	15	18.5
	60	29	4.5		9.67	49			

安装尺寸图 Installation Dimensions Drawing



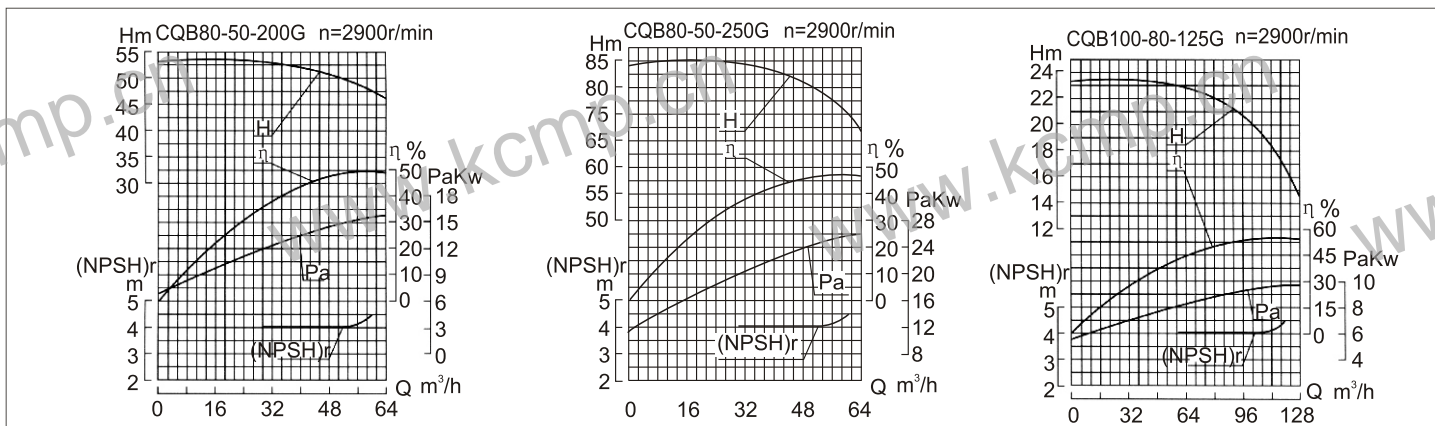
安装尺寸表 Installation Dimensions

Type 泵型号	A	B	C	D	E	F	G	L	H2	H1	H3	φ1
65-40-250	215	300	870	400	440	100	255	1413	100	260	485	18.5
80-65-125	180	260	500	316	350	80	210	1076	80	212	372	13.5
80-65-160	215	260	820	400	440	100	255	1357	100	260	440	18.5

CQB-G型泵性能曲线图、性能参数表及安装尺寸图表

Performance Curve, Performance Parameters Table and Installation Dimensions Drawing, Table of CQB-G Pumps

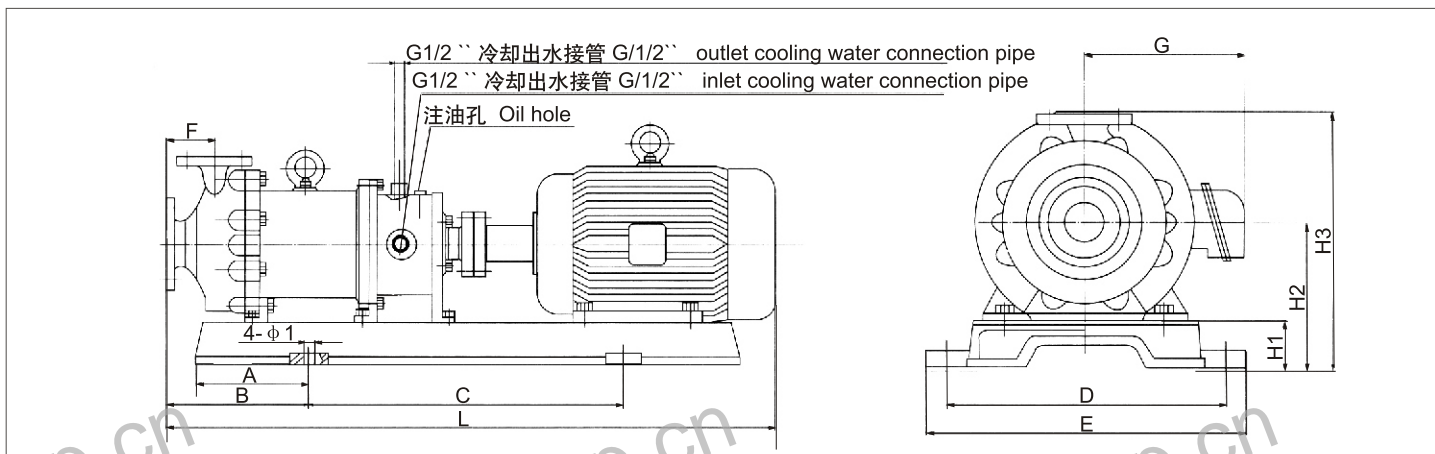
▶ **性能曲线图** Performance Curve



▶ **性能参数表** Performance Parameters

Type 泵型号	Q Capacity 流量 m³/h	Head (m) 扬程	(NPSH)r (m) 汽蚀余量	r/min speed 转速	Power 轴功率 kw	Efficiency 效率 %	配带电机功率 Power kw 介质密度 Medium density g/cm³		
							≤1	≤1.3	≤1.84
80-50-200	30	53	4.0	2900	12.03	36	YB 160L-2 18.5	YB 180M-2 22	YB 200L1-2 30
	50	50	4.0		14.80	46			
80-50-250	30	84	4.0	2900	19.06	36	YB 200L1-2 30	YB 220L2-2 37	YB 225M-2 45
	50	80	4.0		23.68	46			
100-80-125	60	23	4.0	2900	8.35	45	YB 160M1-2 11	YB 160M2-2 15	YB 160L-2 18.5
	100	20	4.0		9.73	56			
	120	16.5	4.5		9.46	57			

▶ **安装尺寸图** Installation Dimensions Drawing



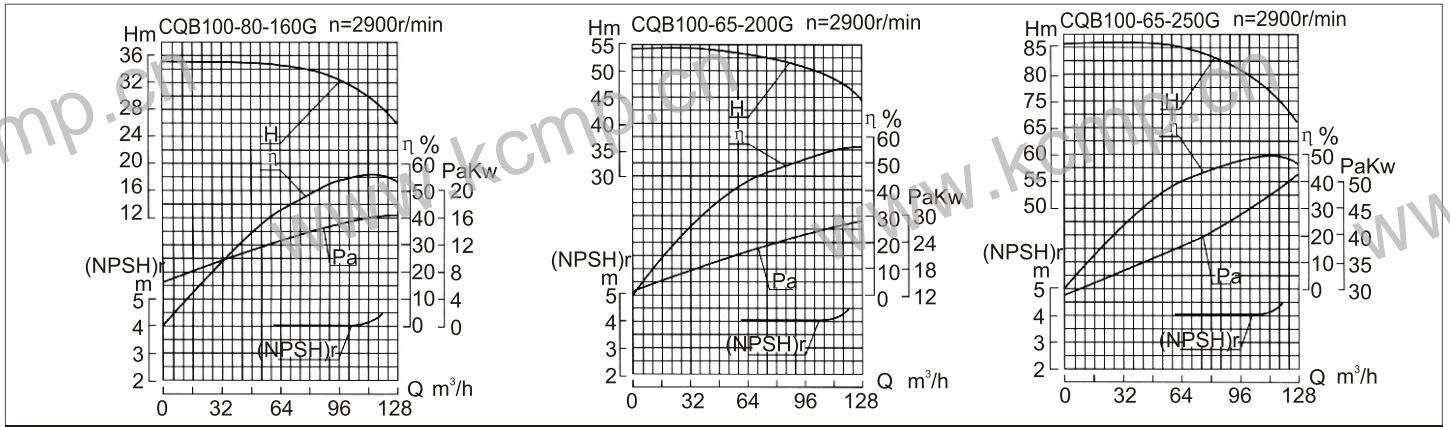
▶ **安装尺寸表** Installation Dimensions

Type 泵型号	A	B	C	D	E	F	G	L	H2	H1	H3	φ1
80-50-200	215	300	870	400	440	100	255	1413	100	260	460	18.5
80-50-250	260	300	880	450	500	125	310	1578	100	300	525	24
100-80-125	215	300	770	400	440	100	255	1368	100	260	440	18.5

CQB-G型泵性能曲线图、性能参数表及安装尺寸图表

Performance Curve, Performance Parameters Table and Installation Dimensions Drawing, Table of CQB-G Pumps

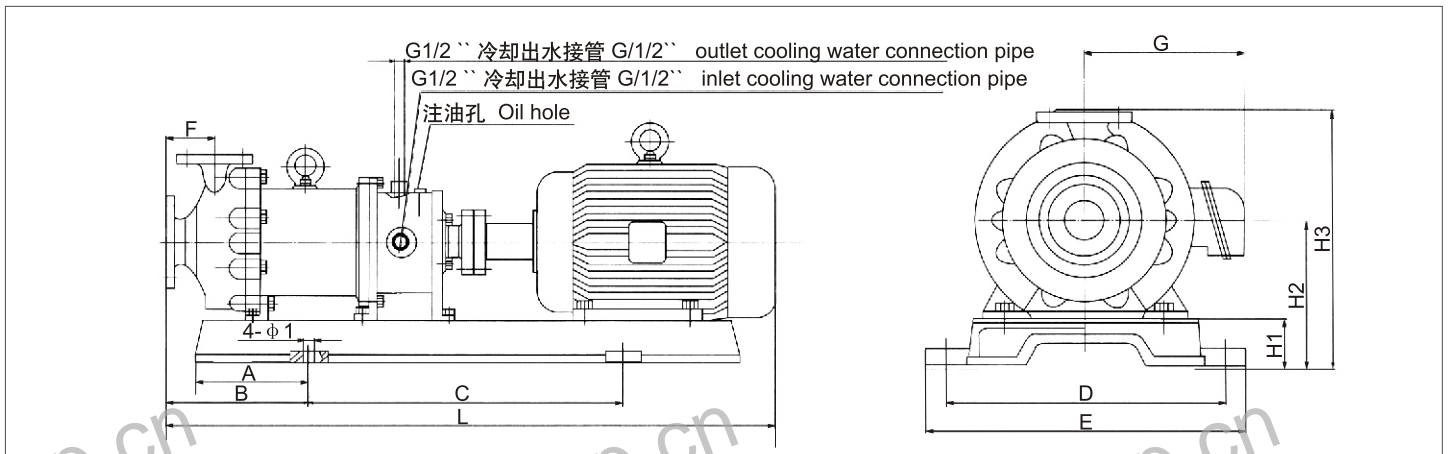
▶ **性能曲线图** Performance Curve



▶ **性能参数表** Performance Parameters

Type 泵型号	Q Capacity 流量 m³/h	Head (m) 扬程	(NPSH)r (m) 汽蚀余量	r/min speed 转速	Power 轴功率 kw	η % Efficiency 效率	配带电机功率 Power kw 介质密度 Medium density g/cm³		
							≤1	≤1.3	≤1.84
100-80-160	60	35	4.0	2900	12.43	46	Y 160L-2	Y 180M-2	Y 200L1-2
	100	32	4.0		15.85	55	18.5	22	30
100-65-200	60	54	4.0	2900	21.01	42	Y 200L1-2	Y 220L2-2	Y 225M-2
	100	50	4.0		25.69	53	30	37	45
100-65-250	60	86	4.0	2900	37.98	37	Y 225M-2	Y 250M-2	Y 280S-2
	100	80	4.0		45.39	48	45	55	75
	120	74.5	4.5		49.69	49			

▶ **安装尺寸图** Installation Dimensions Drawing

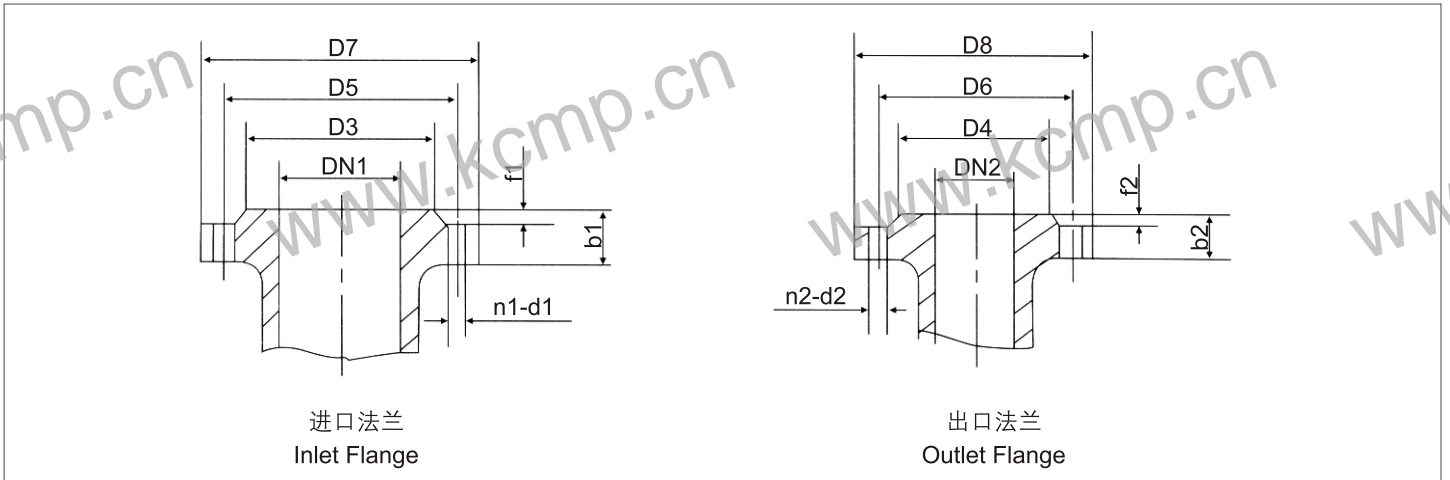


▶ **安装尺寸表** Installation Dimensions

Type 泵型号	A	B	C	D	E	F	G	L	H2	H1	H3	φ1
100-80-160	215	300	870	400	440	100	255	1413	100	260	460	18.5
100-65-200	260	380	880	450	500	100	310	1553	100	300	525	24
100-65-250	260	380	1000	550	600	125	385	1773	120	370	620	24

CQB-G型泵法兰安装尺寸图表 Flange Installation Dimensions Drawing、Table of CQB-G Pumps

▶ 法兰安装尺寸图 Flange Installation Dimensions Drawing




▶ 法兰安装尺寸表 Flange Installation Dimension Table

Type 泵型号	进口法兰 Inlet Flange							出口法兰 Outlet Flange						
	DN1	D3	D5	D7	b1	f1	n1-d1	DN2	D4	D6	D8	b2	f2	n2-d2
32-20-125	32	69	90	120	16	3	4-φ14	20	48	65	96	14	2	4-φ11
32-20-160								25	58	75	100	14	3	4-φ11
40-25-105	40	78	100	130	16	3	4-φ14	25	65	85	115	16	3	4-φ14
40-25-125														
40-25-160		84	110	150	18	3	4-φ18	25	65	85	115	16	3	4-φ14
40-25-200														
50-40-85	50	88	110	140	16	3	4-φ14	40	78	100	130	16	3	4-φ14
50-32-105								32	69	90	120	16	3	4-φ14
50-32-125		99	125	165	20	3	4-φ18	32	76	100	140	18	3	4-φ18
50-32-160														
50-32-200														
50-32-250														
65-50-125	65	108	130	160	16	3	4-φ14	50	88	110	140	16	3	4-φ14
65-50-160								50	99	125	165	20	3	4-φ18
65-40-200		118	145	185	20	3	4-φ18	40	84	110	150	18	3	4-φ18
65-40-250														
80-65-125	80	124	150	190	18	3	4-φ18	65	108	130	160	16	3	4-φ14
80-65-160		132	160	200	20	3	4-φ18	65	118	145	185	20	3	4-φ18
80-50-200		132	160	200	20	3	8-φ18	50	99	125	165	20	3	
80-50-250														
100-80-125	100	144	170	210	18	3	4-φ18	80	124	150	190	18	3	4-φ18
100-80-160								80	132	160	200	20	3	8-φ18
100-65-200		156	180	220	22	3	8-φ18	65	118	145	185	20	3	4-φ18
100-65-250														

MP型塑料磁力泵简介 Brief Introduction of MP Plastic Magnetic Pumps

MP型塑料磁力泵简介 MP Plastic Magnetic Pumps

型号意义 Designation



MP 20R - X 100

- 无代号电压为220V; 100V: 100V; 300: 380V
- 无代号为普通型: M为进出口用螺纹接口; X为大流量型; Z为高扬程型; T为特殊用途; N为改进型
- No code referred to ordinary type; M referred to screw thread in inlet and outlet interface; X referred to large flow type; Z referred to high head type; T referred to special application; N referred to upgraded type
- 产品规格
Product specs
- MP系列塑料磁力驱动循环泵
MP series Plastic magnetic-driving centrifugal pump

工作用途 Applications

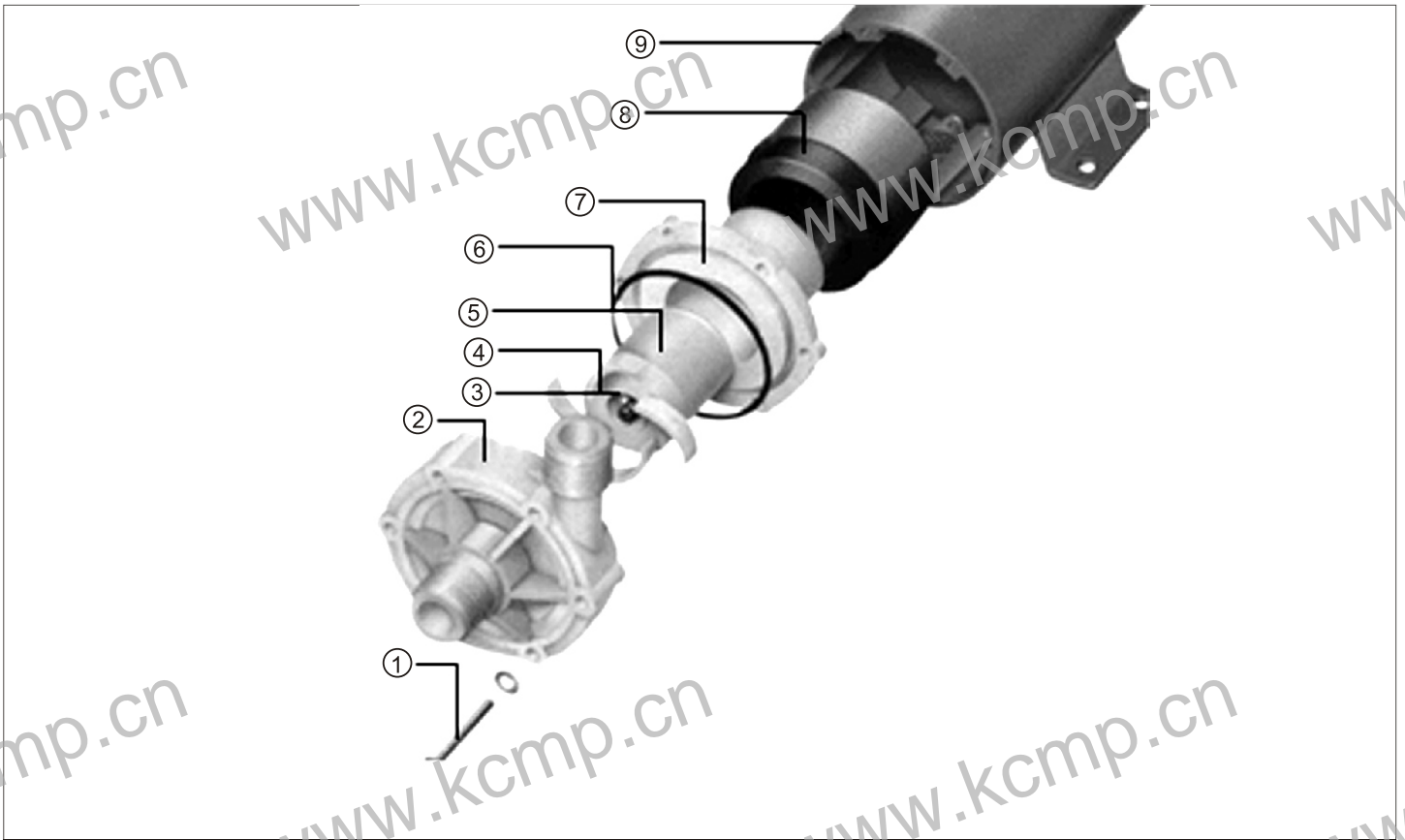
- **化学工业:** 碳酸钠工业化 (盐酸、次氟酸、二次化学品的生产); 氟化物、化学肥料的生产; 气体吸收塔反应液体循环; 油脂提炼 (硫酸); 废酸类的回收及再生系统; 化工厂和运输车辆间的强酸类输送。
Chemical industry: sodium carbonate (the production of hydrochloric acid, hypo-fluoric acid and secondary chemicals); the production of fluoride and chemical fertilizers; circulation of reaction liquid in gas absorption tower; grease extraction (sulfuric acid); reclamation and regeneration system of waste acid; transportation of strong acids between chemical plants and vehicles.
- **药剂业:** 半导体用的发光化学物 (EL)、农药、医药、水处理化学剂的生产
Medicament industry: the production of luminescence chemicals for semiconductors (EL), pesticides, medicines, water treatment chemical agents.
- **电镀业:** 循环过滤各类电镀液。
Electroplating industry: circulation and filtration of various electroplating solutions.
- **照片业:** 即现照相系统; X-光片、黑白、彩色、立体照片的冲晒。
Photography industry: instamatic photographing; the development of X-ray film, black and white, color and stereoscopic pictures.
- **电器用具业:** 电解质电容器的生产 (铝膜的侵蚀); 干电池和蓄电池制造过程中输送电解液; 电路板的蚀刻; 半导体生产过程中输送高纯度化学液。
Electrical appliance industry: the production of electrochemical capacitor (erosion of aluminium film); transportation of electrolyte in the production of dry cells and storage cells; etching of circuit boards; transportation of high purity chemical liquids in the production of semiconductors.
- **金属工业:** 氧化铝膜处理设备; 线材拉伸、钢铁轧制中除油及酸洗; 车辆喷漆前除油及酸洗处理; 氧化钛、稀土元素的生产等。
Metal industry: treatment equipment of pellumina, deoiling and pickling in wire stretching and steel rolling; deoiling and pickling treatment before vehicle painting; the production of titanium oxide and rare earth elements, and etc..
- **矿业:** 金属熔炼 (输送及循环电解液); 废液的洗涤处理。
Mining industry: metal melting (transportation and circulation of electrolyte); washing of liquid waste.
- **食品工业:** 葡萄糖酸的生产 (盐酸); 食油的提炼 (硫酸); 罐装水果工业 (盐酸)。
Foodstuff industry: the production of maltonic acid (hydrochloric acid); extraction of edible oil (sulfuric acid); the industry of tinned fruits (hydrochloric acid).
- **医疗:** 人造肾脏、心肺、超声波清洗机及各种医疗设备。
Medical treatment: hemodialyzer, heart and lung, ultrasonic cleaning machines and other medical equipment.
- **水处理:** 清洗离子交换树脂; 纯水生产设备; 海水淡化设备。
Water treatment: cleaning ion exchange resins; pure water production equipment; seawater desalination equipment.
- **污染控制:** 添加污水处理化学药剂到药液缸; 收集及输送废液; 废气吸收设备 (除臭装置, 排放废气前脱硫)。
Pollution control: waste water treatment chemical agent into liquid medicine cylinder; collection and transportation of waste liquid; waste gas absorption equipment (deodorization device, desulfurization before waste gas discharging).
- **其它:** 应用在银回收、晶片制造、实验工厂、制冷机、饮品机、生活锅炉、热交换器、太阳能系统、漂染、激光系统等领域及喷水池、鱼池、观赏鱼缸循环使用。
Others: application in the fields of silver reclamation, wafer production, experimental plants, refrigerators, potable machines, daily boilers, heat exchangers, solar energy system, bleaching and dyeing and laser system etc., as well as the duty-cycle operation of spray pond, fish pond and ornamental fish bowl.

产品特点 Product Features

- 该泵为磁力泵技术高领域的结晶。凝结了本单位设计人员多年的心血, 也是磁力泵中技术含量最高的产品。
- MP型磁力泵设计特点、造型美观、尤其是轴承采用特种配方陶瓷材料, 具有极强的耐磨性和抗腐蚀性, 走出了磁力泵“严禁空载”的禁区, 保证了它的先进性和安全性。
- The pump is crystallization in the hi-tech field of magnetic pump. It combines many years of our designers, which also contains the highest technical content among various magnetic pumps.
- MP magnetic pump has a unique with stylish appearance. In particular, its bearing adopts ceramic material with special foemula. Bringing about extremely strong resistance to abrasion and corrosion. Thus we've gone out of the forbidden area of "No Loading" for megnetic pump to ensure its leading position and safety.

MP型泵结构图及材料表 Structural Drawing and Material Table of MP Pumps

▶ 结构图 Structural Drawing



▶ 材料表 Material table

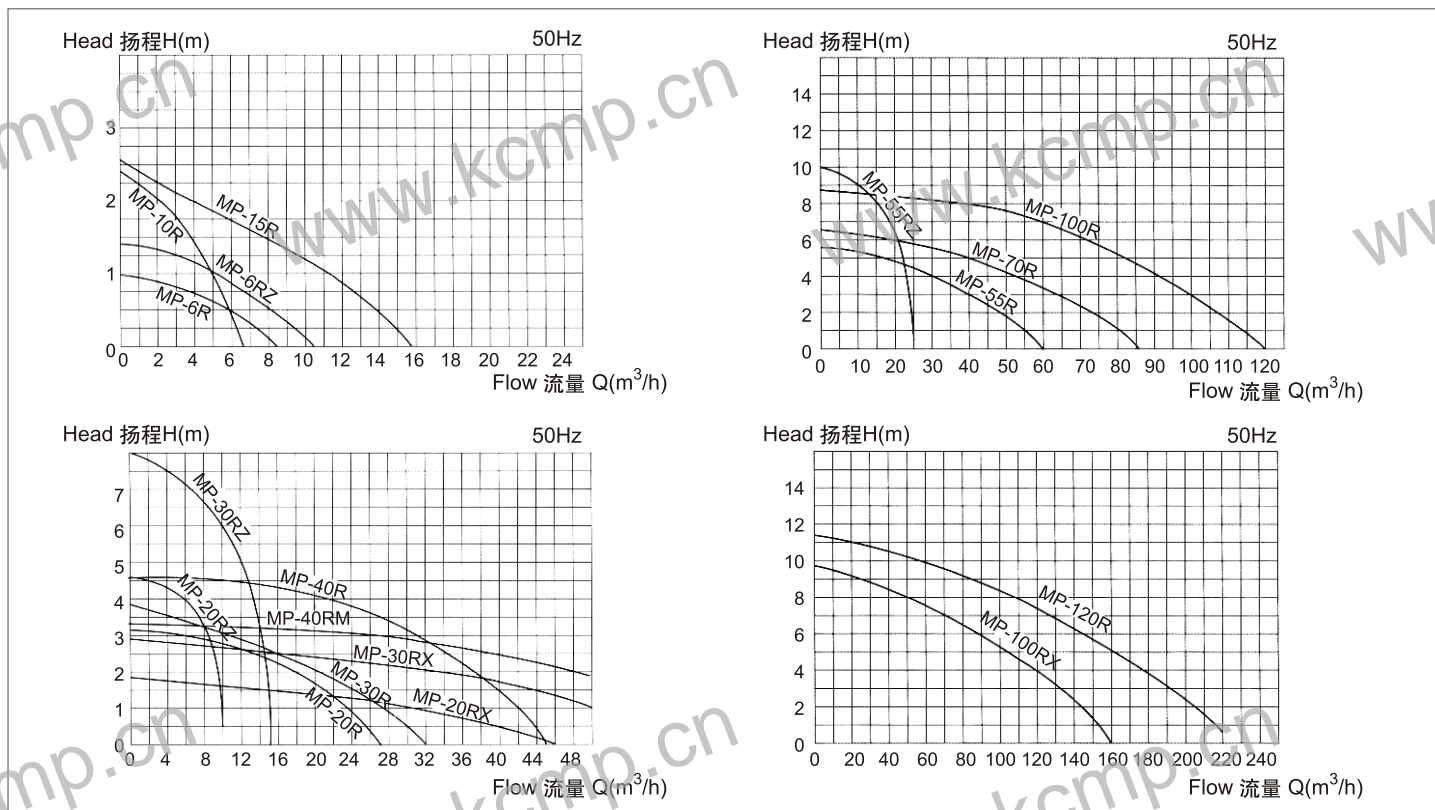
序号 No.	零件名称 Name of part	材质或型号 Material or model
1	固定螺线及垫圈 stationary spiral cord and gasket	不锈钢 stainless steel
2	泵壳 Pump casing	聚炳烯增强玻璃纤维 FRPP
3	泵轴 Pump shaft	氧化铝陶瓷 Alumina ceramics
4	叶轮 Impeller	聚炳烯增强玻璃纤维 FRPP
5	被动磁铁 passive magnet	锶铁氧体 strontium ferrite
6	密封圈 seal ring	氟橡胶 Fluororubber
7	隔离套 spacer sleeve	聚炳烯增强玻璃纤维 FRPP
8	主动磁铁 active magnet	锶铁氧体 strontium ferrite
9	电机 Motor	

MP型泵性能参数表 Performance Parameters Table of MP Pumps

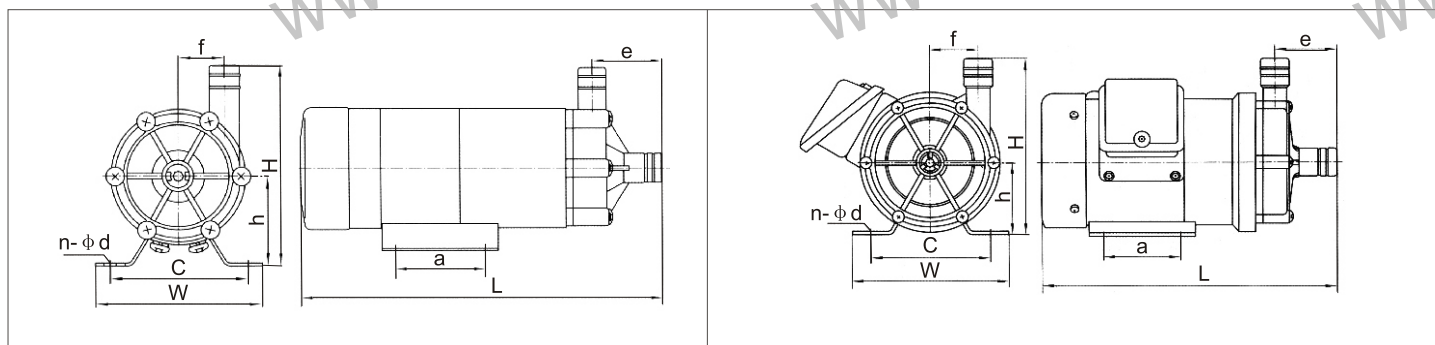
性能参数表 Performance Parameters

Type 泵型号	软管接口 (mm) Tube Interface		螺纹接口 Thread Interface		Q (L/min) Max Capacity 最大流量	Max Head (M) 最高扬程	标准输出 Standard capacity		Medium density (g/cm ³) 介质密度	Motor Power W 电机功率	r/min Speed 转速	Voltage (V) 电压
	进口 Inlet	出口 Outlet	进出口 Inlet & Outlet	活管 Tube (mm)			流量 Flow (L/min)	扬程 Head (m)				
MP-6R	14	14	-	-	8	1	2.8	0.8	<1.2	3	2900	220
MP-6RZ	14	14	-	-	5.5	2.1	3.2	0.8	<1.1	3	2900	220
MP-10R	14	14	-	-	11	1.5	5	1	<1.1	6	2900	220
MP-15R	16	16	-	-	16	2.7	8	1.5	<1.3	10	2900	220
MP-15RM	-	-	3 / 4	13	16	2.4	8	1.5	<1.3	10	2900	220
MP-20R	18	18	-	-	27	3.1	17	2	<1.2	20	2900	220
MP-20RM	-	-	3 / 4	16	27	3.1	17	2	<1.2	20	2900	220
MP-20RX	26	26	-	-	46	1.8	30	1	<1.3	20	2900	220
MP-20RXM	-	-	1	20	46	1.8	30	1	<1.3	20	2900	220
MP-20RZ	18	18	-	-	10	4.6	7	4	<1.1	20	2900	220
MP-20RZM	-	-	3 / 4	13	10	4.6	7	4	<1.1	20	2900	220
MP-30R	20	20	-	-	33	3.8	16	2.5	1.3	45	2900	220
MP-30RM	-	-	3 / 4	16	33	3.8	16	2.5	1.3	45	2900	220
MP-30RX	26	26	-	-	62	2.9	32	2	1.1	45	2900	220
MP-30RXM	-	-	1	20	62	2.9	32	2	1.1	45	2900	220
MP-30RZ	18	18	-	-	15	8	10	6	1.1	45	2900	220
MP-30RZM	-	-	3 / 4	13	15	8	10	6	1.1	45	2900	220
MP-40R	20	20	-	-	45	4.6	22	4	1.1	65	2900	220
MP-40RM	-	-	3 / 4	16	45	4.6	22	4	1.1	65	2900	220
MP-40RX	26	26	-	-	75	3.3	47	2	1.1	65	2900	220
MP-40RXM	-	-	1	20	75	3.3	47	2	1.1	65	2900	220
MP-55R	26	26	-	-	60	5.6	30	4	1.2	90	2900	220/380
MP-55RM	-	-	1	20	60	5.6	30	4	1.2	90	2900	220/380
MP-55RZ	26	26	-	-	25	10	15	8	1.1	90	2900	220/380
MP-55RZM	-	-	1	20	25	10	15	8	1.1	90	2900	220/380
MP-70R	26	26	-	-	86	6.7	50	4	1.1	150/180	2900	220/380
MP-70RM	-	-	1	20	86	6.7	50	4	1.1	150/180	2900	220/380
MP-100R	26	26	-	-	120	8.6	60	7	1.3	250/265	2900	220/380
MP-100RM	-	-	1	20	120	8.6	60	7	1.3	250/265	2900	220/380
MP-100RX	-	-	1 1/4	32	170	9	100	5	1.3	250	2900	220/380
MP-120R	-	-	1 1/2	36	220	10.5	140	6	1.3	370	2900	220/380

▶ **性能曲线图** Performance Curve



▶ **安装尺寸图** Installation Dimensions Drawing



▶ **安装尺寸表** Installation Dimensions

Type 泵型号	a	c	n-φd	e	f	h	H	W	L
MP-6R	/	60	2-7	31	17	36	83	74	130
MP-6RZ	/	60	2-7	31	17	36	83	74	130
MP-15R	49	68	4-6	38	23	45	100	82	197
MP-20R	30	68	4-6	39	29	56	116	85	209
MP-20RZ	30	68	4-6	40	40	56	126	85	212
MP-20RM	30	68	4-6	34	29	56	117	85	205
MP-30R	40	100	4-9	48	30	60	130	120	250
MP-30RZ	40	100	4-9	40	40	60	130	120	234
MP-30RM	40	100	4-9	48	30	60	130	120	250

Type 泵型号	a	c	n-φd	e	f	h	H	W	L
MP-40R	40	100	9	48	30	60	130	120	274
MP-40RM	40	100	9	48	30	60	130	120	274
MP-55R	40	100	9	56	43	66	161	120	275
MP-55RZ	40	100	9	56	43	66	161	120	275
MP-70R	70	108	9	56	44	66	161	142	267
MP-70RM	70	108	9	53	44	66	156	142	264
MP-100R	70	110	9	66	44	74	174	156	322
MP-100RM	70	110	9	66	44	74	174	156	322
MP-100RX	70	110	9	63	40	74	174	156	323
MP-120R	98	110	12	80	51	93	208	140	359

CQG型管道式磁力泵简介 Brief Introduction of CQG Pipeline Magnetic Pumps

▶ CQG型管道式磁力泵 CQG Pipeline Magnetic Pumps



▶ 型号意义 Designation

CQG 32 - 125

叶轮名义直径(mm)
Nominal diameter of impeller (mm)
进出口直径(mm)
Diameter of inlet and outlet (mm)
立式管道磁力泵
Vertical pipeline mounted magnetic pump

▶ 主要性能参数 Main Performance Parameters

- 过流部件材质: 不锈钢(奥氏体)
- Material of Wet Parts: Stainless Steel (Austenite)
- 联接方式: 法兰
- Connecting Types: Flange
- 流量 Q: 4~160 m³/h
- Flow Q: 4~160m³/h
- 扬程 H: 12.5~80 m
- Head H: 12.5~80m
- 功率 N: 0.75~75 kw
- Power N: 0.75~75KW
- 介质的运动粘度: $\leq 30 \times 10^{-6} \text{m}^3/\text{s}$
- Kinematic Viscosity of medium: $\leq 30 \times 10^{-6} \text{m}^3/\text{s}$
- 介质温度(t): -20~100℃
- Medium Temperature (t): -20~100℃

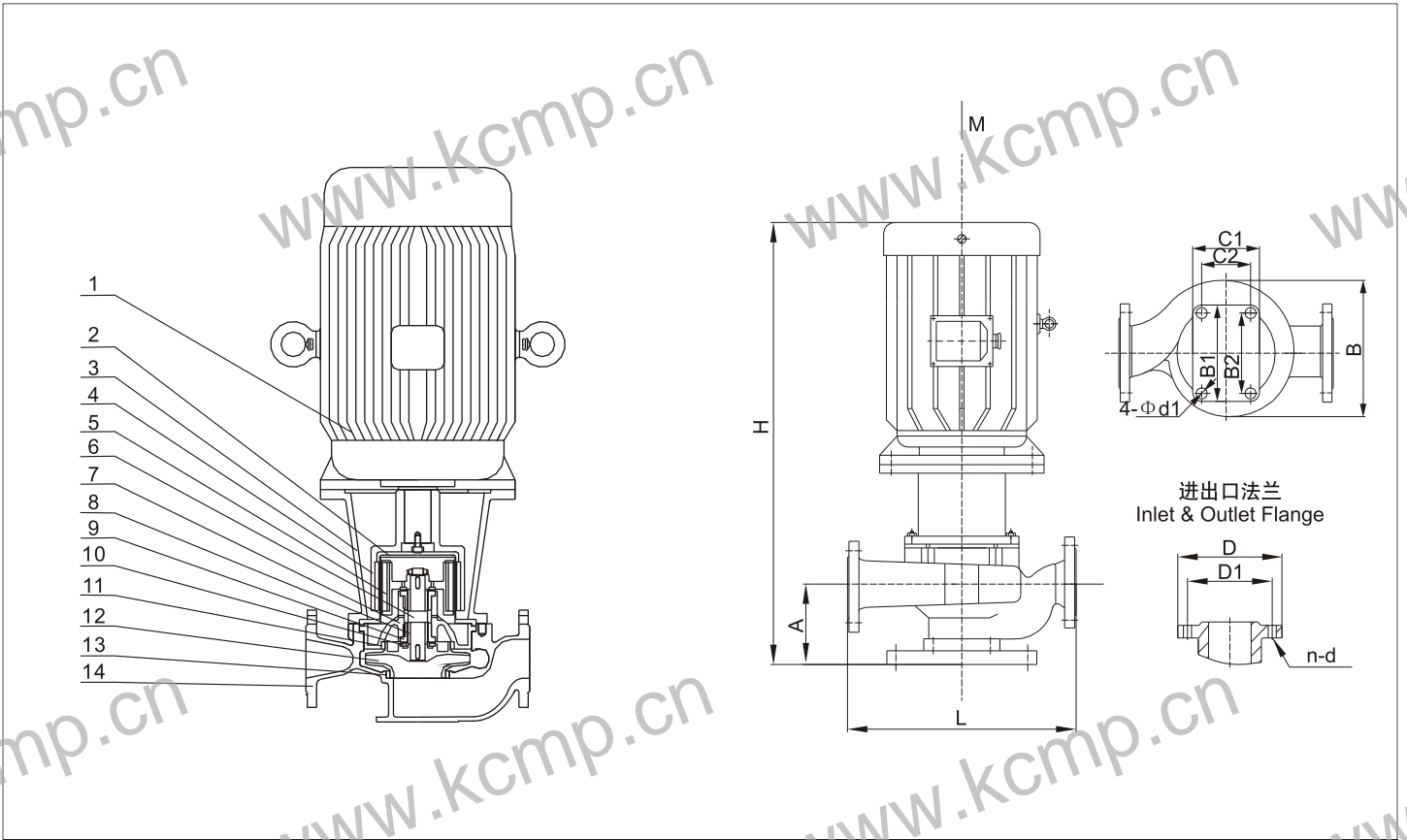
▶ 产品特点 Product Features

- CQG型是在ISG型立式管道泵的基础上设计而成的新型立式结构磁力泵,它秉承ISG泵的优点, 又与磁力传动的完美结合, 达到了无泄漏输送液体的要求。
- CQG is a late-model vertical magnetic pump designed on the base of ISG vertical pipeline mounted pump. Embodying the advantages of ISG pump, this type is provided with magnetic drive for leak-tight delivery of liquid.
- CQG型立式磁力泵可直接安装在管道的任何部位,对管道中的介质进行加压, 可直接替换原来的ISG泵,安装尺寸与ISG泵完全相同, 方便用户更换。
- CQG vertical magnetic pump can be directly mounted to any position on the pipeline, and carries out pressurization to the medium inside pipeline. It can directly replace ISG pump, with installation dimensions completely same as ISG pumps for the convenience of making replacement.

CQG型泵结构图及材料表 Structural Drawing and Material Table of CQG Pumps

结构图 Structural Drawing

安装尺寸图 Installation Dimensions Drawing



材料表 Material Table

序号 No.	零件名称 Name of part	材质或型号 Material or model	序号 No.	零件名称 Name of part	材质或型号 Material or model
1	电机 Motor	Y Y2 or YB系列 Y(Y2) or YB Series	8	轴套 Axle sleeve	YG8
2	隔离套 Spacer sleeve	1Cr18Ni9Ti	9	轴承 Bearing	M106K
3	联接架 Linkup stand	HT200	10	止推环 Reaction ring	陶瓷、氮化硅 Ceramic or nitrogen silicide
4	外磁钢总成 Assembly of outer magnet steel	钕铁硼N33SH NdFeB N33SH	11	密封环 Sealing ring	1Cr18Ni9Ti
5	内磁钢总成 Assembly of inner magnet steel	钕铁硼N33SH NdFeB N33SH	12	叶轮 Impeller	ZG1Cr18Ni9
6	泵轴 Pump shaft	1Cr18Ni9Ti	13	口环 Ring	1Cr18Ni9Ti
7	轴承体 Bearing body	ZG1Cr18Ni9	14	泵体 Pump body	ZG1Cr18Ni9

用户可根据被输送介质的腐蚀性程度对泵的过流部分主要零件选用不同材料。泵的过流部分主要零件的材料及其代号如下：
main parts of flow-through parts may be different materials according to the corrosion extent of the medium to be delivered. The materials for main parts of pump flow-through parts and their codes are stated as following:

材料 material	ZG1Cr18Ni9	ZG1Cr18Ni9Ti	ZG0Cr18Ni12Mo2Ti	ZG1Cr18Ni12Mo2Ti	ZG00Cr17Ni14Mo2	ZG1Cr18Mn13Mo2CuN
代号 No.	303	305	306	307	316L	402

CQG型泵性能参数及安装尺寸表 Performance Parameters and Installation Dimensions Table of CQG Pumps

性能参数及安装尺寸表 Performance Parameters and Installation Dimensions

Type 泵型号	Q Capacity 流量	Head (m) 扬程	Efficiency % 效率	Power kw 电机功率	Net positive suction head (NPSH)r(m) 必需汽蚀余量	外形尺寸 Outline dimensions				安装尺寸 Installation dimensions			进出口法兰尺寸 Dimensions of inlet & outlet flanges		
						L	B	H	C1 × B1	A	C2 × B2	4- d1	D	D1	n-d
25-110	2.8 4.5 5.2	16.0 15.0 13.3	27	0.75	2.3	260	230	435	80×110	75	50×80	4-φ14	φ115	φ85	4-φ14
25-125	2.8 4.5 5.2	20.0 20.0 15.0	21	1.1	2.3	260	230	435	80×110	75	50×80	4-φ14	φ115	φ85	4-φ14
25-160	2.8 4.5 5.2	33.0 32.0 30.0	17	2.2	2.3	300	270	440	90×130	65	60×100	4-φ14	φ115	φ85	4-φ14
32-125	3.1 4.4 5.6	22.0 20.0 18.0	29	1.1	2.3	260	230	435	90×130	80	60×100	4-φ14	φ140	φ100	4-φ18
32-160	3.1 4.4 5.6	33.0 32.0 30.0	29	2.2	2.3	320	270	460	100×150	90	60×110	4-φ14	φ140	φ100	4-φ18
32-200	3.1 4.4 5.6	50.0 48.0 48.0	17	4	2.0	340	330	530	120×170	85	80×130	4-φ14	φ140	φ100	4-φ18
40-125	4.1 6.3 8.3	21.0 20.0 18.0	31	1.5	2.3	280	230	445	100×150	85	60×110	4-φ14	φ150	φ110	4-φ18
40-160	4.4 6.3 8.3	33.0 32.0 30.0	25	3	2.3	320	270	490	100×150	90	60×110	4-φ14	φ150	φ110	4-φ18
40-200	4.4 6.3 8.3	51.0 50.0 48.0	18	5.5	2.3	340	330	555	120×170	95	80×130	4-φ14	φ150	φ110	4-φ18
40-250	4.4 6.3 8.3	82.0 80.0 74.0	13	11	2.3	400	405	655	120×170	95	80×130	4-φ14	φ150	φ110	4-φ18
50-100	8.8 12.5 16.3	13.6 12.5 11.3	47	1.5	2.3	290	230	455	100×150	95	60×110	4-φ14	φ165	φ125	4-φ18
50-125	8.8 12.5 16.3	21.5 20.0 17.8	43	2.2	2.3	300	240	470	100×150	95	60×110	4-φ14	φ165	φ125	4-φ18
50-160	8.8 12.5 16.3	33.0 32.0 30.0	37	4	2.3	320	300	540	120×170	100	80×130	4-φ14	φ165	φ125	4-φ18
50-200	8.8 12.5 16.3	52.0 50.0 48.0	31	7.5	2.3	360	350	615	120×170	100	80×130	4-φ14	φ165	φ125	4-φ18
50-250	8.8 12.5 16.3	82.0 80.0 77.5	23	15	2.3	440	430	750	140×200	105	100×160	4-φ18	φ165	φ125	4-φ18
65-100	17.5 25.0 32.5	13.7 12.5 11.0	54	2.2	2.5	320	235	475	140×200	100	100×160	4-φ18	φ185	φ145	4-φ18
65-125	17.5 25.0 32.5	21.5 20.0 18.0	53	3	2.5	340	280	550	140×200	105	100×160	4-φ18	φ185	φ145	4-φ18
65-160	17.5 25.0 32.5	34.4 32.0 27.0	48	5.5	2.5	360	305	570	140×200	105	100×160	4-φ18	φ185	φ145	4-φ18
65-200	17.5 25.0 32.5	52.0 50.0 45.0	43	11	2.5	380	350	625	140×200	105	100×160	4-φ18	φ185	φ145	4-φ18
65-250	17.5 25.0 32.5	82.0 80.0 76.5	35	18.5	2.5	480	435	755	160×220	120	120×180	4-φ18	φ185	φ145	4-φ18
80-100	25.0 35.0 50.0	13.3 12.0 10.0	58	4	3.0	400	285	570	140×200	120	100×160	4-φ18	φ200	φ160	8-φ18
80-125	25.0 35.0 50.0	21.5 20.0 18.0	57.5	7.5	3.0	400	360	645	140×200	120	100×160	4-φ18	φ200	φ160	8-φ18
80-160	25.0 35.0 50.0	35.5 32.0 28.0	56	11	3.0	400	360	650	140×200	125	100×160	4-φ18	φ200	φ160	8-φ18
80-200	25.0 35.0 50.0	52.0 50.0 46.0	52	18.5	3.0	430	430	775	140×200	125	100×160	4-φ18	φ200	φ160	8-φ18
80-250	25.0 35.0 50.0	83.0 80.0 72.0	44	30	3.0	480	465	840	160×220	130	120×180	4-φ18	φ200	φ160	8-φ18
100-100	70 100 130	13.6 12.5 11.0	61	7.5	4.5	460	360	670	160×220	140	120×180	4-φ18	φ220	φ180	8-φ18
100-125	70 100 130	23.5 20.0 14.0	61	15	4.5	440	430	785	160×220	140	120×180	4-φ18	φ220	φ180	8-φ18
100-160	70 100 130	36.5 32.0 24.0	61	18.5	4.5	500	430	795	160×220	160	120×180	4-φ18	φ220	φ180	8-φ18
100-200	70 100 130	54.0 50.0 42.0	59	30	4.0	480	475	850	160×220	140	120×180	4-φ18	φ220	φ180	8-φ18
100-250	70 100 130	80.0 80.0 68.0	54	45	4.0	550	520	960	160×220	140	120×180	4-φ18	φ220	φ180	8-φ18
125-125	96 160 192	22.6 20.0 17.0	65	18.5	4.0	520	430	840	190×280	165	130×220	4-φ18	φ250	φ210	8-φ18
125-160	96 160 192	36.0 32.0 27.0	63	30	4.0	520	460	920	190×280	165	130×220	4-φ18	φ250	φ210	8-φ18
125-200	96 160 192	55.0 50.0 46.0	62	45	5.5	560	510	1040	250×300	160	200×250	4-φ22	φ250	φ210	8-φ18
125-250	96 160 192	87.0 80.0 73.0	60	75.0	5.0	600	660	1180	250×300	150	200×250	4-φ22	φ250	φ210	8-φ18



上海凯程制泵有限公司

SHANGHAI KAICHENG PUMP CO.,LTD

地址：上海市陕西北路1438号

邮编：200060

电话：021-62989587 62989687

021-56701122 52527372

0086-21-62989871

传真：021-62989790

国内贸易邮箱：kcmp@kcmp.cn

国际贸易邮箱：Sell@kcmp.cn

公司邮箱：kaicheng@sh163.net

公司网址：<http://www.kcmp.cn>

免费咨询电话：8008207382

Add: No.1438 Shanxi North Road,Shanghai.

Zip: 200060

Tel: 021-62989587 62989687

021-56701122 52527372

0086-21-62989871

Fax: 021-62989790

Domestic Trade: kcmp@kcmp.cn

International Trade: Sell@kcmp.cn

E-mail: kaicheng@sh163.net

Web: www.kcmp.cn